

Product datasheet for **MG202465**

Mrps34 (NM_023260) Mouse Tagged ORF Clone

Product data:

Product Type:	Expression Plasmids
Product Name:	Mrps34 (NM_023260) Mouse Tagged ORF Clone
Tag:	TurboGFP
Symbol:	Mrps34
Synonyms:	0610007F04Rik; 5330430D13Rik; AV001970; Tce2
Mammalian Cell Selection:	Neomycin
Vector:	pCMV6-AC-GFP (PS100010)
E. coli Selection:	Ampicillin (100 ug/mL)
ORF Nucleotide Sequence:	>MG202465 representing NM_023260 Red=Cloning site Blue=ORF Green=Tags(s)

TTTTGTAATACGACTCACTATAGGGCGGCCGGAATTCGTCGACTGGATCCGGTACCGAGGAGATCTGCC
GCC**CGATCGCC**

ATGGCGCGGAAGAAAGTAAGACCCCGGCTGATCGCTGAGCTGGCTCGCCGCGTGCGCGCCTTGCGCGAGC
AGCGGAACCAGCCGCGAGATTCTCAGCTCTACGCCCTAGACTACGAGACGCTGACCCGGCCGCACTCCGG
TCGCCGGCTGCCGTACGCGCTGGGCCGACGTGCGTCGCGAGAGCCGCCTCTACAGCTGCTCGCCCGC
CTCCCCTTGTTTCGGCCTGGGCCGTCTGGTTACCCGCAAGTCTGGCTGTGGCAGCAGCAGCAGCCATGCT
ACTGGCGCCTCACGCGTGTGAGGCCGACTACACGGCGCAGAACTGGACCACGGGAGGGCCTGGGGCAT
CCTGACTTTCAAAGGGAAGAGTGAGGATACGGCTCGGGAAATCGAGCAAGTCATGTACCAGATTGGCGT
TTGGTACCCAAGCACGAGGAGGAGGCCCTTCACTGCGTTCACTGCGAAACCAGAGGACAGATTGAATTCTG
TCCCTATCCACCTCTGCTGCGAGCCATGATCCTCGCTGAACGGCAGAAAAACGGGGATACCAGCGTGCA
GGAGCCGCTCCTGAACCTGGAGAGGACTCGAATGCGCCCTGGGACTACCCTGCAAAACAGGAGACGAAA
GGGAGGGCCAAGGGCACCCAGTC

AG**CGGACCG**ACGCGTACGCGGCCGCTCGAG - GFP Tag - GTTTAA



[View online »](#)

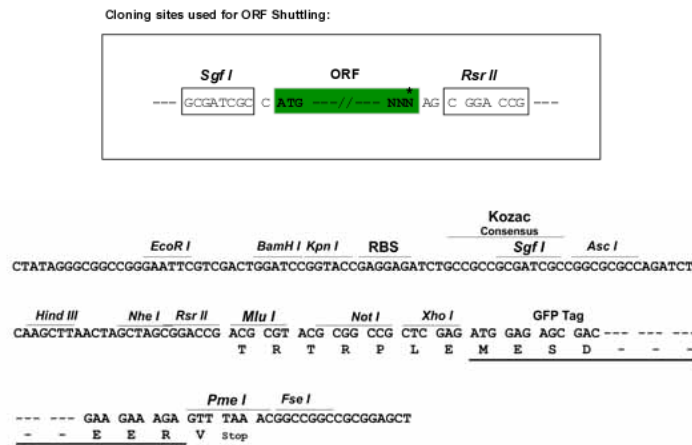
Protein Sequence: >MG202465 representing NM_023260
 Red=Cloning site Green=Tags(s)

MARKKVRPRLIAELARRVRALREQRNQPRDSQLYALDYETLTRPHSGRRLPVRAWADVRRSRLQLLAR
 LPLFGLGRLVTRKSWLWQHDEPCYWRLTRVRPDYTAQNLDHGRAWGILTFKKGSEDTAREIEQVMYHDWR
 LVPKHEEEAFTAFTAKPEDRLNSVPYPPLLRAMILAERQKNGDTSVQEPLLNLERTMRMPWDYPAKQETK
 GRAKGTPV

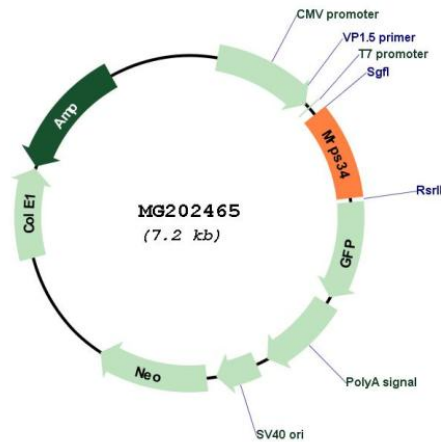
SGPTRRRLE - GFP Tag - V

Restriction Sites: SgfI-RsrII

Cloning Scheme:



Plasmid Map:



ACCN: NM_023260

ORF Size: 654 bp

OTI Disclaimer:	The molecular sequence of this clone aligns with the gene accession number as a point of reference only. However, individual transcript sequences of the same gene can differ through naturally occurring variations (e.g. polymorphisms), each with its own valid existence. This clone is substantially in agreement with the reference, but a complete review of all prevailing variants is recommended prior to use. More info
OTI Annotation:	This clone was engineered to express the complete ORF with an expression tag. Expression varies depending on the nature of the gene.
Components:	The ORF clone is ion-exchange column purified and shipped in a 2D barcoded Matrix tube containing 10ug of transfection-ready, dried plasmid DNA (reconstitute with 100 ul of water).
Reconstitution Method:	<ol style="list-style-type: none">1. Centrifuge at 5,000xg for 5min.2. Carefully open the tube and add 100ul of sterile water to dissolve the DNA.3. Close the tube and incubate for 10 minutes at room temperature.4. Briefly vortex the tube and then do a quick spin (less than 5000xg) to concentrate the liquid at the bottom.5. Store the suspended plasmid at -20°C. The DNA is stable for at least one year from date of shipping when stored at -20°C.
RefSeq:	NM_023260.1 , NP_075749.1
RefSeq Size:	899 bp
RefSeq ORF:	657 bp
Locus ID:	79044
UniProt ID:	Q9JIK9
Cytogenetics:	17 A3.3
Gene Summary:	Required for mitochondrial translation, plays a role in maintaining the stability of the small ribosomal subunit and the 12S rRNA that are required for mitoribosome formation. [UniProtKB/Swiss-Prot Function]