

Product datasheet for **MG202458**

Gatad1 (BC019449) Mouse Tagged ORF Clone

Product data:

Product Type:	Expression Plasmids
Product Name:	Gatad1 (BC019449) Mouse Tagged ORF Clone
Tag:	TurboGFP
Symbol:	Gatad1
Synonyms:	2310031E19Rik; 2810047M21Rik; 8430439A17Rik; 9130430G15Rik; B330017N08Rik; ENSMUSG00000073241; Odag
Mammalian Cell Selection:	Neomycin
Vector:	pCMV6-AC-GFP (PS100010)
E. coli Selection:	Ampicillin (100 ug/mL)
ORF Nucleotide Sequence:	>MG202458 representing BC019449 Red=Cloning site Blue=ORF Green=Tags(s)

TTTTGTAATACGACTCACTATAGGGCGGCCGGAATTCGTCGACTGGATCCGGTACCGAGGAGATCTGCC
GCC**GCGATCGCC**

ATGCCGCTGGCCTGAAGCCACCTGCAGCATGTGCAAGACTACGTCGTCTCCATGTGGAAGAAGAGTC
CACAGGGCGAGATCCTCTGCCATCACTGCACGGCCGGGGCGGGCGGGAGTGGCGGGCGGGAC
CGGGGGCGGTGGCGGGCGGGCGGGTGGCTTCGGCACCACCACCTTCGCCACCACCTCGGCCGGTCTTCG
CAGAGCAACGGGGCGGGCGGGCAAGCAGAGTAAGCAAGAAATTCACAGAAGGTCGGCCCGCTCAGAA
ATACCAAATACAAATCGGCTCCAGCTGCTGAAAAGAAAGTTTCCACGAAAGGAAAAGGAGAAGACATAT
TTTTAAGTTAAAAATCCTATCAAAGCGCCTGAATCTGTTTCTACCATAGTCACTGCAGAGTCAATCTTC
TACAAGGGAGTATATTACCAAATGGTGACGTTGTTTCTGTGATTGATGAGCAAGATGGGAAGCCGACT
ATGCTCAGATCAGGGCTTTATTAGGACCAGTACTGTGAGAAGAGTGCCGCGCTGACATGGCTCATTCC
TACCCTCGCCAGTCCCAGAGACCAGTTTGATCCTGCATCATATATAATAGGTGAAGCCAGCATCTTAGA
TTTACTTCATTCTTCAGTGCATTA

ACGCGTACGCGGGCCGCTCGAG - GFP Tag - GTTTAA



[View online »](#)

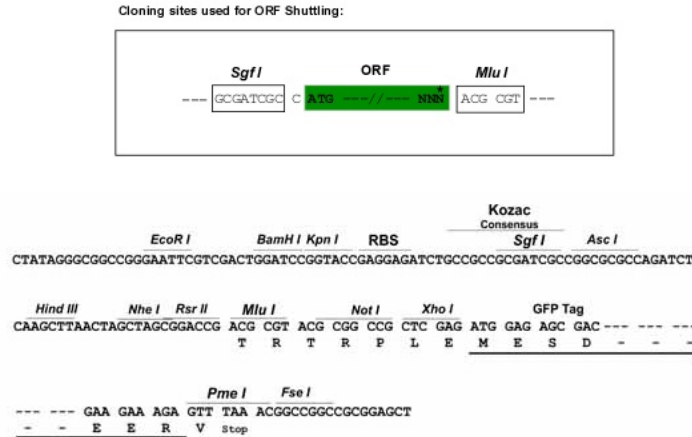
Protein Sequence: >MG202458 representing BC019449
Red=Cloning site Green=Tags(s)

MPLGLKPTCSMCKTTSSSMWKKSPQGEILCHHCTGRGGGGAGVAGGTGGGGGGGGFGTTTTFATTSAGPS
 QSNNGGGGKQSKQEIHRRSARLRNTKYSAPAAEKKVSTKKGRRRHIFKLNPIKAPESVSTIVTAESIF
 YKGVYYYQIGDVVSVIDEQDGKPYAQRGFIQDQYCEKSAALTWLIPTLASPRDQFDPASYIIGEAOHLR
 FTSFFSAL

TRTRPLE - GFP Tag - V

Restriction Sites: SgfI-MluI

Cloning Scheme:



ACCN: BC019449

ORF Size: 654 bp

OTI Disclaimer: The molecular sequence of this clone aligns with the gene accession number as a point of reference only. However, individual transcript sequences of the same gene can differ through naturally occurring variations (e.g. polymorphisms), each with its own valid existence. This clone is substantially in agreement with the reference, but a complete review of all prevailing variants is recommended prior to use. [More info](#)

OTI Annotation: This clone was engineered to express the complete ORF with an expression tag. Expression varies depending on the nature of the gene.

Components: The ORF clone is ion-exchange column purified and shipped in a 2D barcoded Matrix tube containing 10ug of transfection-ready, dried plasmid DNA (reconstitute with 100 ul of water).

Reconstitution Method:

1. Centrifuge at 5,000xg for 5min.
2. Carefully open the tube and add 100ul of sterile water to dissolve the DNA.
3. Close the tube and incubate for 10 minutes at room temperature.
4. Briefly vortex the tube and then do a quick spin (less than 5000xg) to concentrate the liquid at the bottom.
5. Store the suspended plasmid at -20°C. The DNA is stable for at least one year from date of shipping when stored at -20°C.

RefSeq: [BC019449.1](#)

RefSeq Size: 1223 bp

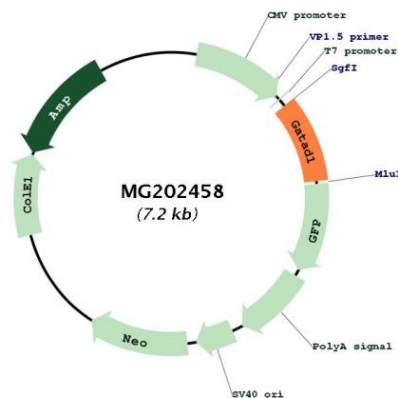
RefSeq ORF: 656 bp

Locus ID: 67210

Cytogenetics: 5 A1

Gene Summary: Component of some chromatin complex recruited to chromatin sites methylated 'Lys-4' of histone H3 (H3K4me).[UniProtKB/Swiss-Prot Function]

Product images:



Circular map for MG202458