

Product datasheet for **MG202456**

Fgf15 (NM_008003) Mouse Tagged ORF Clone

Product data:

Product Type:	Expression Plasmids
Product Name:	Fgf15 (NM_008003) Mouse Tagged ORF Clone
Tag:	TurboGFP
Symbol:	Fgf15
Synonyms:	FGF19
Mammalian Cell Selection:	Neomycin
Vector:	pCMV6-AC-GFP (PS100010)
E. coli Selection:	Ampicillin (100 ug/mL)
ORF Nucleotide Sequence:	>MG202456 representing NM_008003 Red=Cloning site Blue=ORF Green=Tags(s)

TTTTGTAATACGACTCACTATAGGGCGCCGGGAATTCGTCGACTGGATCCGGTACCGAGGAGATCTGCC
GCC**CGATCGCC**

ATGGCGAGAAAGTGGAAACGGGCGTGCGGTGGCCCGAGCCCTGGTCTGGCCACTCTGTGGCTGGCTGTGT
CTGGGCGTCCCCTGGCCAGCAATCCCAGTCTGTGTGATGAAGATCCACTCTTCTCTACGGCTGGGG
CAAGATTACCCGCCTGCAGTACCTGTACTCCGCTGGTCCCTATGTCTCCAAGTCTTCTCCGAATCCGG
AGCGACGGCTCTGTGGACTGCGAGGAGGACAAAACGAACGAAATTTGTTGGAATTCGCGCGGTGCTC
TGAAGACGATTGCCATCAAGGACGTCAGCAGCGTGCGGTACCTCTGCATGAGCGCGGACGGCAAGATATA
CGGGCTGATTGCTACTCGGAGGAAGACTGTACCTTCAGGGAGGAAATGGACTGTTTAGGCTACAACCAG
TACAGATCCATGAAACACCATCTCCATATCATCTTCATCCAGGCCAAGCCAGAGAACAGCTCCAGGACC
AGAAACCTCAAACCTTTATCCCCGTGTTTCACCGCTCCTTCTTTGAAACCGGGGACCAGCTGAGGTCTAA
AATGTTCTCCCTGCCCTGGAGAGTGACAGCATGGATCCGTTTCAGGATGGTGGAGGATGTAGACCACCTA
GTGAAGAGTCCCAGCTTCCAGAAA

ACGCGTACGCGGGCCGCTCGAG - GFP Tag - GTTTAA



[View online »](#)

Protein Sequence: >MG202456 representing NM_008003
 Red=Cloning site Green=Tags(s)

MARKWNGRAVARALVLATLWLAVSGRPLAQQSQSVSDEDPLFLYGWGKITRLQYLYSAGPYVSNCFLRIR
 SDGSVDCEEDQNERNLLEFRAVALKTIAIKDVSSVRYLCMSADGKIYGLIRYSEEDCTFREEMDCLYGYNQ
 YRSMKHHLHIIFIQAKPREQLQDQKPSNFIPVFHRSFFETGDQLRSMKMSLPLESDSMDPFRMVEDVDHL
 VKSPSPFQK

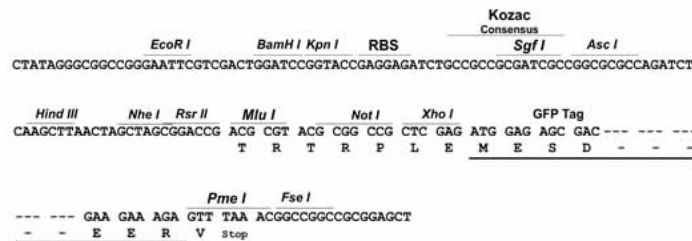
TRTRPLE - GFP Tag - V

Chromatograms: https://cdn.origene.com/chromatograms/ja2275_f04.zip

Restriction Sites: SgfI-MluI

Cloning Scheme:

Cloning sites used for ORF Shuttling:



ACCN: NM_008003

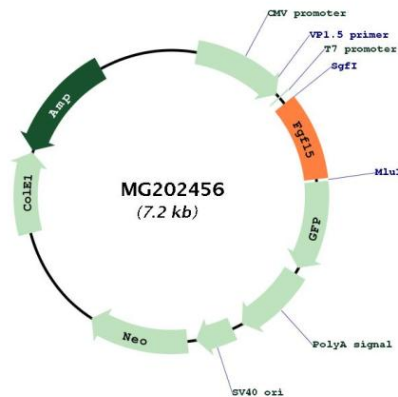
ORF Size: 654 bp

OTI Disclaimer: Due to the inherent nature of this plasmid, standard methods to replicate additional amounts of DNA in E. coli are highly likely to result in mutations and/or rearrangements. Therefore, OriGene does not guarantee the capability to replicate this plasmid DNA. Additional amounts of DNA can be purchased from OriGene with batch-specific, full-sequence verification at a reduced cost. Please contact our customer care team at custsupport@origene.com or by calling 301.340.3188 option 3 for pricing and delivery.

The molecular sequence of this clone aligns with the gene accession number as a point of reference only. However, individual transcript sequences of the same gene can differ through naturally occurring variations (e.g. polymorphisms), each with its own valid existence. This clone is substantially in agreement with the reference, but a complete review of all prevailing variants is recommended prior to use. [More info](#)

OTI Annotation: This clone was engineered to express the complete ORF with an expression tag. Expression varies depending on the nature of the gene.

Components:	The ORF clone is ion-exchange column purified and shipped in a 2D barcoded Matrix tube containing 10ug of transfection-ready, dried plasmid DNA (reconstitute with 100 ul of water).
Reconstitution Method:	<ol style="list-style-type: none">1. Centrifuge at 5,000xg for 5min.2. Carefully open the tube and add 100ul of sterile water to dissolve the DNA.3. Close the tube and incubate for 10 minutes at room temperature.4. Briefly vortex the tube and then do a quick spin (less than 5000xg) to concentrate the liquid at the bottom.5. Store the suspended plasmid at -20°C. The DNA is stable for at least one year from date of shipping when stored at -20°C.
RefSeq:	NM_008003.2 , NP_032029.1
RefSeq Size:	1809 bp
RefSeq ORF:	657 bp
Locus ID:	14170
UniProt ID:	O35622
Cytogenetics:	7 F5
Gene Summary:	Involved in the suppression of bile acid biosynthesis through down-regulation of CYP7A1 expression.[UniProtKB/Swiss-Prot Function]

Product images:

Circular map for MG202456