

Product datasheet for **MG202399**

Pip5kl1 (BC094346) Mouse Tagged ORF Clone

Product data:

Product Type: Expression Plasmids
Product Name: Pip5kl1 (BC094346) Mouse Tagged ORF Clone
Tag: TurboGFP
Symbol: Pip5kl1
Synonyms: BC028795
Mammalian Cell Selection: Neomycin
Vector: pCMV6-AC-GFP (PS100010)
E. coli Selection: Ampicillin (100 ug/mL)
ORF Nucleotide Sequence: >MG202399 representing BC094346
Red=Cloning site Blue=ORF Green=Tags(s)

TTTTGTAATACGACTCACTATAGGGCGGCCGGAATTCGTCGACTGGATCCGGTACCGAGGAGATCTGCC
GCC**CGATCGCC**

ATGGCCACACCAAGCCTTAGGTCCCACGAGATCCCGGCCACTCCAGGAGGCTGGAAACAAGTCCATTT
CCTCAGGGAGCCGCCGCGCCTTCTTTGGCACCTCCGAGCCAGGCAGTCTAGAGTTGGCCTGTTTGAGGT
CGGTCCAGGACATGAGCTGCATAGAATGACACGAATGATGCAGGAAGGGCTGTGGCTGCCACCCAGGTC
TCCAAGAACAACCCACCCACGGGACCTACTACCCAGAAGGATTACCTGGAAGTCATGACCCAAGTTCACG
AAGAGGGCTTCGAGCTGGGCACCTTGGCTGGCCCGCCTTTGCACGGCTGAGGAAATCCATTGGCCTGAC
TGAAGAGGACTACCAGGCTACTCTTGGCCCTGGTATCCCTACCTTCAATTCTTCAGCACCTCCAAAAGC
AAGGCCAGCTTCTTCTGACCCACGACCAGCGCTTCTTTGTGAAGACCCAACGGCGCCACGAAGTGCATG
TGCTGCTTGCCCACCTGCCCGCTATGTGGAGCACCTGCAGCAATACCCACACTCCCTGCTGGCAGCGTT
GCTGGGCGTATACAGTCTCGGGTAGCTCAGGGGAAAAAGGTGAGTGTAGCAGACAGAGGTGGCTCAGCA
GTGGGGCTGCTGGAGGG

ACGCGTACGCGGCCGCTCGAG - GFP Tag - GTTTAA



[View online »](#)

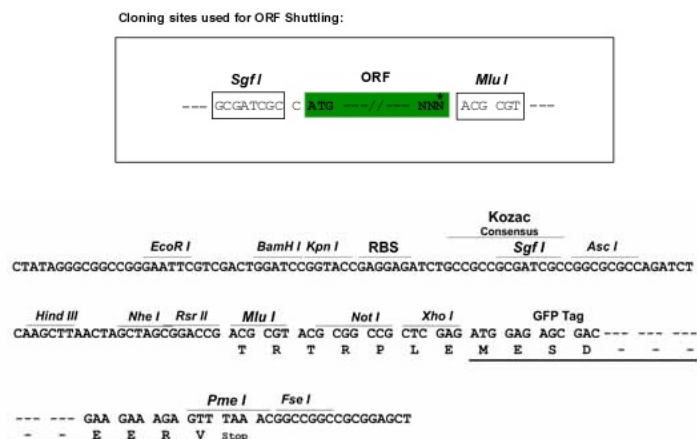
Protein Sequence: >MG202399 representing BC094346
 Red=Cloning site Green=Tags(s)

MATPSLRSH EIPAHSQEAGNKSISSSGRRGLLWHLRARQSRVGLFEVGPGH E LHRMTRMMQEGLWAATQV
 SKNNPPTGPTTQKDYLEVMTQVHEEGFELGTLAGPAFARLRKSI GLTEEDYQATLGP G DPYLQFFSTSKS
 KASFFLTHDQRFVKTQRRHEVHVLLAHLPRYVEHLQQYPHSL LARLLGVYSLRVAQGGK VSVADRGGSA
 VGAAGG

TRTRPLE - GFP Tag - V

Restriction Sites: SgfI-MluI

Cloning Scheme:



ACCN: BC094346

ORF Size: 650 bp

OTI Disclaimer: The molecular sequence of this clone aligns with the gene accession number as a point of reference only. However, individual transcript sequences of the same gene can differ through naturally occurring variations (e.g. polymorphisms), each with its own valid existence. This clone is substantially in agreement with the reference, but a complete review of all prevailing variants is recommended prior to use. [More info](#)

OTI Annotation: This clone was engineered to express the complete ORF with an expression tag. Expression varies depending on the nature of the gene.

Components: The ORF clone is ion-exchange column purified and shipped in a 2D barcoded Matrix tube containing 10ug of transfection-ready, dried plasmid DNA (reconstitute with 100 ul of water).

Reconstitution Method:

1. Centrifuge at 5,000xg for 5min.
2. Carefully open the tube and add 100ul of sterile water to dissolve the DNA.
3. Close the tube and incubate for 10 minutes at room temperature.
4. Briefly vortex the tube and then do a quick spin (less than 5000xg) to concentrate the liquid at the bottom.
5. Store the suspended plasmid at -20°C. The DNA is stable for at least one year from date of shipping when stored at -20°C.

RefSeq: [BC094346](#), [AAH94346](#)

RefSeq Size: 2207 bp

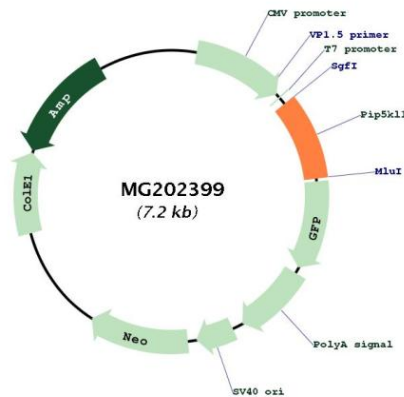
RefSeq ORF: 650 bp

Locus ID: 227733

Cytogenetics: 2 B

Gene Summary: May act as a scaffold to localize and regulate type I PI(4)P 5-kinases to specific compartments within the cell, where they generate PI(4,5)P2 for actin nucleation, signaling and scaffold protein recruitment and conversion to PI(3,4,5)P3.[UniProtKB/Swiss-Prot Function]

Product images:



Circular map for MG202399