

Product datasheet for **MG202388**

Mob3b (NM_178061) Mouse Tagged ORF Clone

Product data:

Product Type: Expression Plasmids
Tag: TurboGFP
Symbol: Mob3b
Synonyms: 8430436F23Rik; A430018A01Rik; Mobkl2b
Mammalian Cell Selection: Neomycin
Vector: pCMV6-AC-GFP (PS100010)
E. coli Selection: Ampicillin (100 ug/mL)

ORF Nucleotide Sequence: >MG202388 representing NM_178061
Red=Cloning site Blue=ORF Green=Tags(s)

TTTTGTAATACGACTACTATAGGGCGCCGGGAATTCGTCGACTGGATCCGGTACCGAGGAGATCTGCC
GCCGCGATCGCC

ATGTCCATCGCCCTGAAGCAAGTGTCAACAAGGACAAGACCTCCGGCCCAAGAGGAAGTTGAACCCG
GCACACAAAGATTTGAGCTGCACAAACGAGCTCAGGCGTCCCTCAACTCGGGTGTGGACCTGAGGGCAGC
CGTGCAGTTACCCAACGGCGAGGACCAGAACGACTGGGTGGCTGTGCACGTGGTGGACTTCTTCAATCGC
ATTAACCTCATCTACGGCACCATCTGTGAGTTCGACTGAGCGGACCTGCCCTGTGATGTCAAGGGGCC
CGAAATACGAGTACCGATGGCAGGATGACCTCAAGTATAAGAAACCAACTGCACTGCCCGCTCCCAAGTA
CATGAATCTGCTTATGGATTGGATTGAAGTCCAGATAAACAATGAGGACATATTTCCAACATGTGTTGGC
GTCCCCTCCCAAAGAATTCTCCAGATCTGCAAGAAGATCCTATGCCGCTCTTTGGGTCTTCGTCC
ATGTCTACATTCACCTTTGACCGTGTATTGTGATGGCGCAGAGGCTCACGTCAACACCTGCTACAA
ACACTTCTATTACTTCGTACAGAGATGAACCTCATAGACCGCAAGGAGCTGGAGCCCTTGAAAGAGATG
ACAACCAGGATGTGTAC

ACGCGTACGCGGCCGCTCGAG - GFP Tag - GTTTAA

Protein Sequence: >MG202388 representing NM_178061
Red=Cloning site Green=Tags(s)

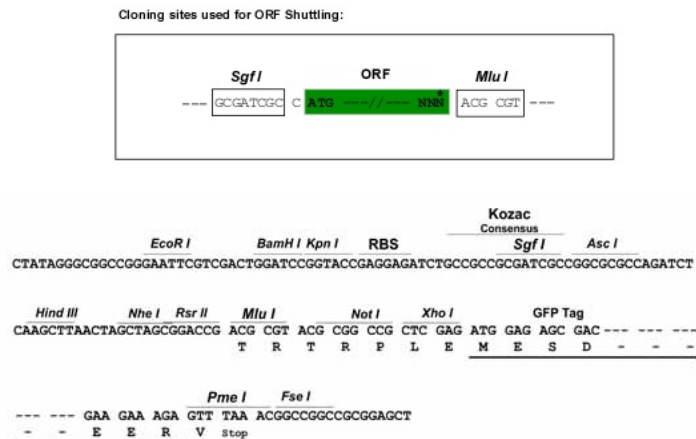
MSIALKQVFNKDKTFRPKRFEPGTQRFELHKRAQASLNSGVDLRAAVQLPNGEDQNDWVAVHVVDFFNR
INLIYGTICEFCTERTCPVMSGPKYERYWQDDLKYYKPTALPAPQYMNLLMDWIEVQINNEDIPTCVG
VPFPKNFLQICKILCRLFRVHVYIHHFDRIVMGAEAHVNTCYKHFYFVTEMNLIDRKELEPLKEM
TTRMCH

TRTRPLE - GFP Tag - V



Restriction Sites: SgfI-MluI

Cloning Scheme:



ACCN: NM_178061

ORF Size: 648 bp

OTI Disclaimer: The molecular sequence of this clone aligns with the gene accession number as a point of reference only. However, individual transcript sequences of the same gene can differ through naturally occurring variations (e.g. polymorphisms), each with its own valid existence. This clone is substantially in agreement with the reference, but a complete review of all prevailing variants is recommended prior to use. [More info](#)

OTI Annotation: This clone was engineered to express the complete ORF with an expression tag. Expression varies depending on the nature of the gene.

Components: The ORF clone is ion-exchange column purified and shipped in a 2D barcoded Matrix tube containing 10ug of transfection-ready, dried plasmid DNA (reconstitute with 100 ul of water).

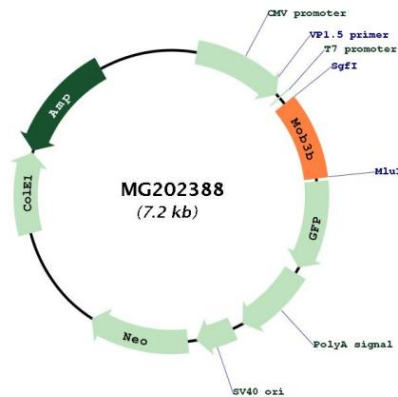
Reconstitution Method:

1. Centrifuge at 5,000xg for 5min.
2. Carefully open the tube and add 100ul of sterile water to dissolve the DNA.
3. Close the tube and incubate for 10 minutes at room temperature.
4. Briefly vortex the tube and then do a quick spin (less than 5000xg) to concentrate the liquid at the bottom.
5. Store the suspended plasmid at -20°C. The DNA is stable for at least one year from date of shipping when stored at -20°C.

Note: Plasmids are not sterile. For experiments where strict sterility is required, filtration with 0.22um filter is required.

RefSeq: [NM_178061.3](#)

RefSeq Size:	2382 bp
RefSeq ORF:	651 bp
Locus ID:	214944
UniProt ID:	Q8VE04
Cytogenetics:	4 16.86 cM
Gene Summary:	Modulates LATS1 expression in the Hippo signaling pathway which plays a pivotal role in organ size control and tumor suppression by restricting proliferation and promoting apoptosis. [UniProtKB/Swiss-Prot Function]

Product images:

Circular map for MG202388