

## Product datasheet for **MG202376**

### Naca (BC083340) Mouse Tagged ORF Clone

#### Product data:

Product Type:	Expression Plasmids
Product Name:	Naca (BC083340) Mouse Tagged ORF Clone
Tag:	TurboGFP
Symbol:	Naca
Synonyms:	skNAC, mKIAA0363
Mammalian Cell Selection:	Neomycin
Vector:	pCMV6-AC-GFP (PS100010)
E. coli Selection:	Ampicillin (100 ug/mL)
ORF Nucleotide Sequence:	>MG202376 representing BC083340 Red=Cloning site Blue=ORF Green=Tags(s)

TTTTGTAATACGACTCACTATAGGGCGGCCGGAATTCGTCGACTGGATCCGGTACCGAGGAGATCTGCC  
GCC**CGATCGCC**

ATGCCCGGTGAAGCCACAGAAACCGTCCCTGCTACAGAGCAGGAGTTGCCACAGCCTCAGGCTGAGACAG  
GATCGGGAACAGAGTCTGACAGTGATGAGTCAGTACCAGAGCTCGAGGAACAAGACTCCACACAGACGGC  
CACGCAGCAAGCCAGCTGGCAGCCGCAGCAGAGATCGATGAAGAACCTGTTAGTAAAGCCAAGCAGAGT  
CGAAGTGAGAAGAAGCAAGGAAGGCTATGTCCAACTGGGTCTTCGACAGGTTACAGGGTTACGAGAG  
TCACTATCCGAAAATCTAAAAATATCCTCTTTGTCATCACAAAACCCGATGTCTACAAGAGCCCAGCTTC  
AGACACCTACATAGTGTTTGGGGAAGCCAAGATTGAAGATTTGTCTCAGCAAGCAGATTAGCAGCTGCT  
GAGAAATTCAAAGTTCAAGGTGAAGCTGTTTCAAACATTCAGGAAAACACTCAGACTCCAACCGTCCAAG  
AGGAGAGTGAAGAAGAGGAGGTTGATGAGACGGGTGTGGAAGTTAAGGACATAGAAGTGGTCATGTGCGCA  
AGCAAACGTATCAAGAGCAAAGGCTGTTTCGAGCCCTGAAAAACAACAGTAATGATATTGTAATGCTATT  
ATGGAATTAACAATG

**ACGCGT**ACGCGGCCGCTCGAG - GFP Tag - GTTTAA



[View online »](#)

**Protein Sequence:** >MG202376 representing BC083340  
 Red=Cloning site Green=Tags(s)

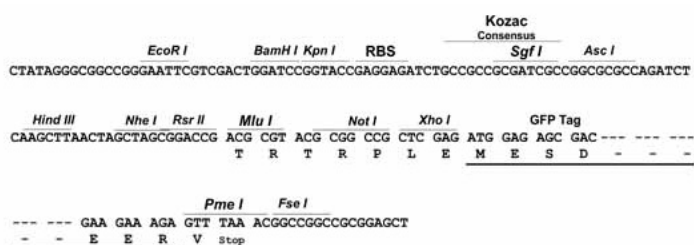
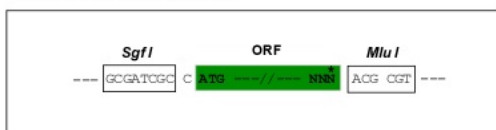
MPGEATETVPATEQELPQPQAETGSGTESDSDESVPLEEQDSTQTATQQAQLAAAAEIDEEPVSKAKQS  
 RSEKKARKAMSKLGLRQVTGVTRVTIRKSKNILFVITKPDVYKSPASDTYIVFGEAKIEDLSQQAQLAAA  
 EKFKVQGEAVSNIQENTQTPTVQEESEEEEEVDETGVEVKDIELVMSQANVSRAKAVRALKNNSNDIVNAI  
 MELTM

TRTRPLE - GFP Tag - V

**Restriction Sites:** SgfI-MluI

**Cloning Scheme:**

Cloning sites used for ORF Shuttling:



**ACCN:** BC083340

**ORF Size:** 647 bp

**OTI Disclaimer:** The molecular sequence of this clone aligns with the gene accession number as a point of reference only. However, individual transcript sequences of the same gene can differ through naturally occurring variations (e.g. polymorphisms), each with its own valid existence. This clone is substantially in agreement with the reference, but a complete review of all prevailing variants is recommended prior to use. [More info](#)

**OTI Annotation:** This clone was engineered to express the complete ORF with an expression tag. Expression varies depending on the nature of the gene.

**Components:** The ORF clone is ion-exchange column purified and shipped in a 2D barcoded Matrix tube containing 10ug of transfection-ready, dried plasmid DNA (reconstitute with 100 ul of water).

**Reconstitution Method:**

1. Centrifuge at 5,000xg for 5min.
2. Carefully open the tube and add 100ul of sterile water to dissolve the DNA.
3. Close the tube and incubate for 10 minutes at room temperature.
4. Briefly vortex the tube and then do a quick spin (less than 5000xg) to concentrate the liquid at the bottom.
5. Store the suspended plasmid at -20°C. The DNA is stable for at least one year from date of shipping when stored at -20°C.

**RefSeq:** [BC083340](#), [AAH83340](#)

**RefSeq Size:** 819 bp

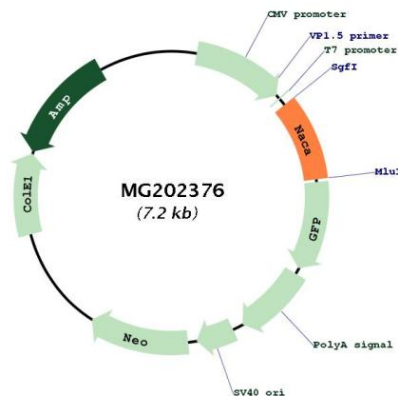
**RefSeq ORF:** 647 bp

**Locus ID:** 17938

**Cytogenetics:** 10 D3

**Gene Summary:** Prevents inappropriate targeting of non-secretory polypeptides to the endoplasmic reticulum (ER). Binds to nascent polypeptide chains as they emerge from the ribosome and blocks their interaction with the signal recognition particle (SRP), which normally targets nascent secretory peptides to the ER. Also reduces the inherent affinity of ribosomes for protein translocation sites in the ER membrane (M sites) (By similarity). Isoform 1 and isoform 2 appear to bind DNA and play roles in transcription. Isoform 1 may function as a specific coactivator for JUN, acting to stabilize the interaction of JUN homodimers with promoter elements. [UniProtKB/Swiss-Prot Function]

## Product images:



Circular map for MG202376