

## Product datasheet for **MG202373**

### Scn3b (NM\_153522) Mouse Tagged ORF Clone

#### Product data:

Product Type:	Expression Plasmids
Product Name:	Scn3b (NM_153522) Mouse Tagged ORF Clone
Tag:	TurboGFP
Symbol:	Scn3b
Synonyms:	1110001K16Rik; 4833414B02Rik; Scnb3
Mammalian Cell Selection:	Neomycin
Vector:	pCMV6-AC-GFP (PS100010)
E. coli Selection:	Ampicillin (100 ug/mL)
ORF Nucleotide Sequence:	>MG202373 representing NM_153522 Red=Cloning site Blue=ORF Green=Tags(s)

TTTTGTAATACGACTCACTATAGGGCGGCCGGAATTCGTCGACTGGATCCGGTACCGAGGAGATCTGCC  
GCC**CGATCGCC**

ATGCCTGCCTTCAACAGATTGCTTCCCCTAGCTTCTCTAGTGCTCATCTACTGGGTCAGAGTCTGCTTCC  
CTGTGTGTGTAGAAGTACCCTCGGAGACAGAAGCCGTCAGGGCAATCCATGAAGCTGAGATGCATCTC  
CTGCATGAAGAGGGAGGAGGTGGAGGCCACCACTGTAGTGGAGTGGTTCTACAGGCCTGAGGGCGGTAAA  
GATTTCTTATATAGTATCGAAATGGCCACCAGGAGGTGGAGAGCCCCTTCCAAGGTCGTCTGCAGT  
GGAATGGGAGCAAAGACCTGCAGGACGTATCCATCACTGTTCTCAATGTCACCTCTGAATGACTCTGGCCT  
CTACACATGTAATGTGTCCAGGGAGTTTGAGTTCGAAGCACACCGGCCCTTTGTGAAGACCAAGACTA  
ATACCCCTGCGAGTCACTGAAGAGGCGGAGAAGACTTCACCTCCGTGGTCTCGGAAATCATGATGTACA  
TCCTCCTGGTCTTCTCACCTTGTGGCTGTTTATTGAGATGATCTATTGCTACAGAAAGGTCTCTAAGGC  
CGAAGAGGCAGCTCAGGAAAATGCGTCTGACTACCTTGCTATCCCTTCAGAGAACAAGGAGAAGCTCTGTG  
GTACCCGTGGAGGAA

**ACGCGT**ACGCGGCCGCTCGAG - GFP Tag - GTTTAA



[View online »](#)

**Protein Sequence:** >MG202373 representing NM\_153522  
 Red=Cloning site Green=Tags(s)

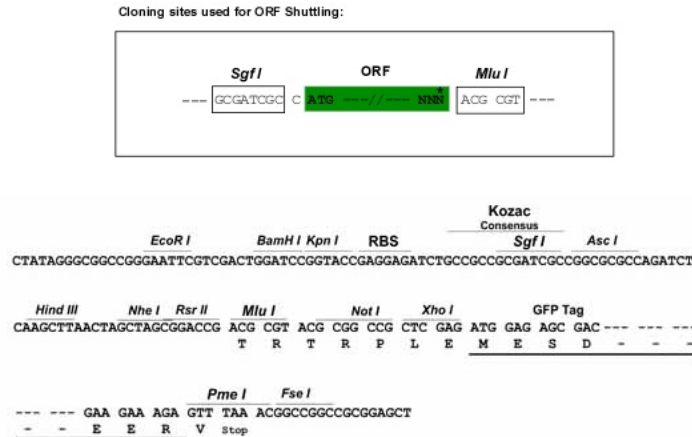
MPAFNRLLPLASLVLIIYWRVCFVVCVEVPSETEAVQGNSMKLRICISCMKREEVEATTVVEWFYRPEGGK  
 DFLIYEYRNGHQEVESPFQGLQWNGSKDLQDVSITVLNVTLNDSGLYTCNVSREFEFEAHRPFVKTRRL  
 IPLRVTEEAGEDFTSVVSEIMMYILLVFLTLWLFIEIYCYRKVSKAEAAQENASDYLAIPSENKENS  
 VPVEE

TRTRPLE - GFP Tag - V

**Chromatograms:** [https://cdn.origene.com/chromatograms/ja1824\\_d04.zip](https://cdn.origene.com/chromatograms/ja1824_d04.zip)

**Restriction Sites:** SgfI-MluI

**Cloning Scheme:**



**ACCN:** NM\_153522

**ORF Size:** 645 bp

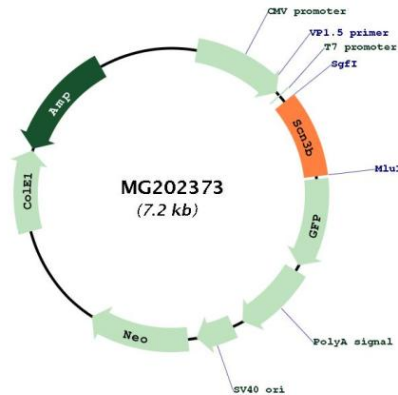
**OTI Disclaimer:** Due to the inherent nature of this plasmid, standard methods to replicate additional amounts of DNA in E. coli are highly likely to result in mutations and/or rearrangements. Therefore, OriGene does not guarantee the capability to replicate this plasmid DNA. Additional amounts of DNA can be purchased from OriGene with batch-specific, full-sequence verification at a reduced cost. Please contact our customer care team at [custsupport@origene.com](mailto:custsupport@origene.com) or by calling 301.340.3188 option 3 for pricing and delivery.

The molecular sequence of this clone aligns with the gene accession number as a point of reference only. However, individual transcript sequences of the same gene can differ through naturally occurring variations (e.g. polymorphisms), each with its own valid existence. This clone is substantially in agreement with the reference, but a complete review of all prevailing variants is recommended prior to use. [More info](#)

**OTI Annotation:** This clone was engineered to express the complete ORF with an expression tag. Expression varies depending on the nature of the gene.

<b>Components:</b>	The ORF clone is ion-exchange column purified and shipped in a 2D barcoded Matrix tube containing 10ug of transfection-ready, dried plasmid DNA (reconstitute with 100 ul of water).
<b>Reconstitution Method:</b>	<ol style="list-style-type: none"> <li>1. Centrifuge at 5,000xg for 5min.</li> <li>2. Carefully open the tube and add 100ul of sterile water to dissolve the DNA.</li> <li>3. Close the tube and incubate for 10 minutes at room temperature.</li> <li>4. Briefly vortex the tube and then do a quick spin (less than 5000xg) to concentrate the liquid at the bottom.</li> <li>5. Store the suspended plasmid at -20°C. The DNA is stable for at least one year from date of shipping when stored at -20°C.</li> </ol>
<b>RefSeq:</b>	<u>NM_153522.2, NP_705742.2</u>
<b>RefSeq Size:</b>	670 bp
<b>RefSeq ORF:</b>	648 bp
<b>Locus ID:</b>	235281
<b>Cytogenetics:</b>	9 A5.1
<b>Gene Summary:</b>	Modulates channel gating kinetics. Causes unique persistent sodium currents. Inactivates the sodium channel opening more slowly than the subunit beta-1. Its association with NFASC may target the sodium channels to the nodes of Ranvier of developing axons and retain these channels at the nodes in mature myelinated axons (By similarity).[UniProtKB/Swiss-Prot Function]

**Product images:**



Circular map for MG202373