

Product datasheet for **MG202365**

Xrcc3 (BC043073) Mouse Tagged ORF Clone

Product data:

Product Type: Expression Plasmids
Product Name: Xrcc3 (BC043073) Mouse Tagged ORF Clone
Tag: TurboGFP
Symbol: Xrcc3
Mammalian Cell Selection: Neomycin
Vector: pCMV6-AC-GFP (PS100010)
E. coli Selection: Ampicillin (100 ug/mL)
ORF Nucleotide Sequence: >MG202365 representing BC043073
 Red=Cloning site Blue=ORF Green=Tags(s)

TTTTGTAATACGACTCACTATAGGGCGGCCGGAATTCGTCGACTGGATCCGGTACCGAGGAGATCTGCC
 GCC**CGATCGCC**

ATGGACTTGGATCAGCTGGACCTAAACCCCGAATTACTGCTGCGGTTAAGAGGGGCAGACTGAAGTCAG
 TGAAGGAGATTCTGTGCTACTCCGGACCAGACTTGCAGCGGCTCACCGCCTGCCAGCCACGATGTGCA
 GTGCCTGCTGAGAGCTGCCTCTCTACACCTTCGGGAAGCCGCTCCTCTCAGCACTGCATCTGTTCCAG
 CAGAAGGAGAGCTTCCCTGAGCAGCATCAACGCCCTGAGCCTAGGCTGCCCTGTCTGGATCAGTTCCTGG
 GTGGAGGCTGCCCTGGAGGGCATCACTGGCCTGGCTGGCTGAGCCTCAGCAGGAAAGACCCAGCTGGC
 GCTACAGCTCTGCCTGGCTGTGCAGTTCCTCAAGACAATATGGAGGCTAGAGGCCGGGCTGTCTACATC
 TGCACAGAAGATGCCTTCCCCAGCAAGCGGCTGTGGCAGCTCATCGCGCAGCAGCGGAGGCTGCGGACAG
 ACGCGCCTGAGGAGCTGATCGAGAAGATCAGGTTAGCAACCACATCTTCATTGAACACGCGGCCGACGT
 GCCCATTTCTGTTGAGTTCACCTTCAGGCCTCAGCCATCAGGGCGAAGCTCTGCTCTCGTGGGG
 CCACACTGCGAAGAC

ACGCGTACGCGGCCGCTCGAG - GFP Tag - GTTTAA

Protein Sequence: >MG202365 representing BC043073
 Red=Cloning site Green=Tags(s)

MDLDQLDLNPRITAAVKRGRKLSVKEILCYSGPDLQRLTGLPSHDVQCLLRAASLHLRGSRVLSALHLFQ
 QKESFPEQHQRSLGCPVLDQFLGGGLPLEGITGLAGCSSAGKTQLALQLCLAVQFPRQYGGLEAGAVYI
 CTEDAFPSKRLWQLIAQRRRLRTDAPEELIEKIRFSNHIFIEHAADVPHFVVSSTFRPQPSPGRSSCSRWG
 PHCED

TRTRPLE - GFP Tag - V

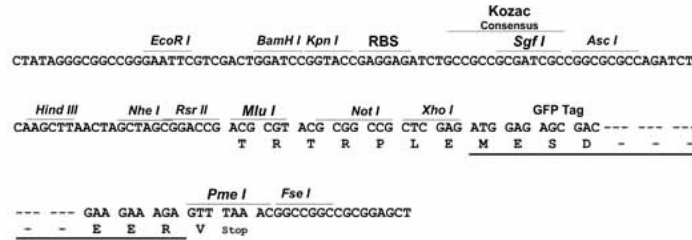
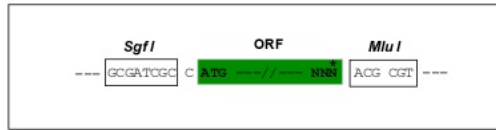


[View online »](#)

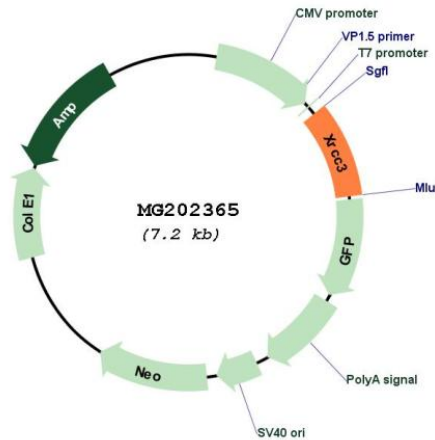
Restriction Sites: SgfI-MluI

Cloning Scheme:

Cloning sites used for ORF Shuttling:



Plasmid Map:



ACCN: BC043073

ORF Size: 647 bp

OTI Disclaimer: The molecular sequence of this clone aligns with the gene accession number as a point of reference only. However, individual transcript sequences of the same gene can differ through naturally occurring variations (e.g. polymorphisms), each with its own valid existence. This clone is substantially in agreement with the reference, but a complete review of all prevailing variants is recommended prior to use. [More info](#)

OTI Annotation: This clone was engineered to express the complete ORF with an expression tag. Expression varies depending on the nature of the gene.

Components:	The ORF clone is ion-exchange column purified and shipped in a 2D barcoded Matrix tube containing 10ug of transfection-ready, dried plasmid DNA (reconstitute with 100 ul of water).
Reconstitution Method:	<ol style="list-style-type: none">1. Centrifuge at 5,000xg for 5min.2. Carefully open the tube and add 100ul of sterile water to dissolve the DNA.3. Close the tube and incubate for 10 minutes at room temperature.4. Briefly vortex the tube and then do a quick spin (less than 5000xg) to concentrate the liquid at the bottom.5. Store the suspended plasmid at -20°C. The DNA is stable for at least one year from date of shipping when stored at -20°C.
RefSeq:	<u>BC043073</u> , <u>AAH43073</u>
RefSeq Size:	2318 bp
RefSeq ORF:	647 bp
Locus ID:	74335
Cytogenetics:	12 F1
Gene Summary:	This gene encodes a member of the RecA/Rad51-related protein family that participates in homologous recombination to maintain chromosome stability and repair DNA damage. This gene functionally complements Chinese hamster irs1SF, a repair-deficient mutant that exhibits hypersensitivity to a number of different DNA-damaging agents and is chromosomally unstable. Allelic variants in the human gene are associated with susceptibility to breast cancer and cutaneous malignant melanoma. [provided by RefSeq, Sep 2015]