

Product datasheet for **MG202351**

Rpl10 (NM_052835) Mouse Tagged ORF Clone

Product data:

Product Type:	Expression Plasmids
Product Name:	Rpl10 (NM_052835) Mouse Tagged ORF Clone
Tag:	TurboGFP
Symbol:	Rpl10
Synonyms:	D0HXS648; DXHXS648; DXHXS648E; QM; QM16
Mammalian Cell Selection:	Neomycin
Vector:	pCMV6-AC-GFP (PS100010)
E. coli Selection:	Ampicillin (100 ug/mL)
ORF Nucleotide Sequence:	>MG202351 representing NM_052835 Red=Cloning site Blue=ORF Green=Tags(s)

TTTTGTAATACGACTCACTATAGGGCGGCCGGAATTCGTCGACTGGATCCGGTACCGAGGAGATCTGCC
GCC**CGATCGCC**

ATGGGCCGCCGCCCGCCGGTGTACCAGTATTGTAAGAACAAGCCATACCCAAAGTCTCGTTTCTGCC
GTGGTGTCCCTGATGCTAAGATCCGAATCTTTGATTTGGGACGGAAGAAAGCAAAGTTGATGAATTCCC
ACTTTGTGGCCATATGGTGTGATGAATATGAGCAACTCTTCTGAAGCACTGGAGGCTGCCCGTATT
TGTGCCAACAAATACATGGTAAAGAGTTGTGGCAAGGATGGCTTTCATATCCGAGTGAGGCTCCACCTT
TCCATGTCATCCGTATCAACAAGATGTTGTCTGTGCTGGGCTGACAGGCTCCAGACAGGATGCGTGG
TGCTTTGGGAAGCCCCAGGGCACAGTGGCCAGGTTACATTGGCCAGGTCATCATGTCCATCCGAACC
AAGTTGCAGAACAAGGAACATGTGATTGAGGCTCTGCGAAGAGCCAAGTTCAAGTTCCCTGGCCGCCAGA
AGATCCACATCTCAAAGAAGTGGGGCTTACCAAGTTAATGCAGATGAATTTGAAGACATGGTTGCTGA
GAAGCGGCTCATTCTGATGGCTGTGGTGTCAAATATATCCCAATCGTGGTCTCTGGACAAGTGGAGA
GCCCTGCATTCC

ACGCGTACGCGGCCGCTCGAG - GFP Tag - GTTTAA



[View online »](#)

Protein Sequence: >MG202351 representing NM_052835
 Red=Cloning site Green=Tags(s)

MGRRPARCYRYCKNKYPKSRFCRGVPAKIRIFDLGRKKAKVDFPLCGHMVSDEYEQLSSEALEAARI
 CANKYMKSCGKDFHVRVLPFHVIRINKMLSCAGADRLQTGMRGAFGKPGQTVARVHIGQVIMSIRT
 KLQNKHEVIEALRRAKFKFPGRQKIHISKKWGFTKFNADEFEDMVAEKRLIPDGGCVKYIPNRGPLDKWR
 ALHS

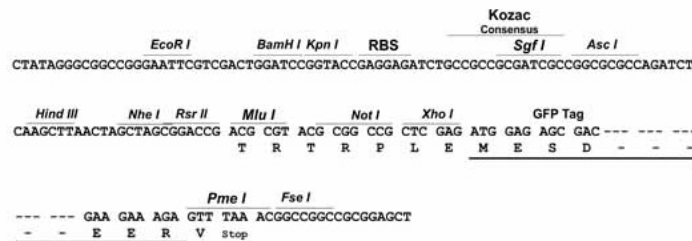
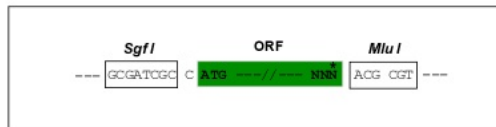
TRTRPLE - GFP Tag - V

Chromatograms: https://cdn.origene.com/chromatograms/ja2432_e02.zip

Restriction Sites: SgfI-MluI

Cloning Scheme:

Cloning sites used for ORF Shuttling:



ACCN: NM_052835

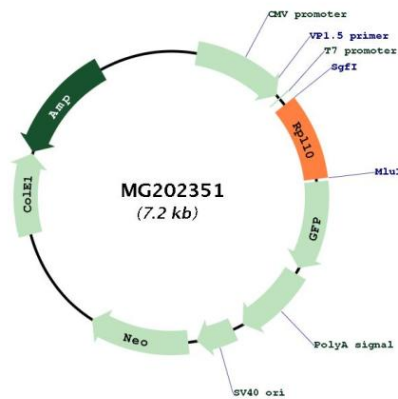
ORF Size: 642 bp

OTI Disclaimer: Due to the inherent nature of this plasmid, standard methods to replicate additional amounts of DNA in E. coli are highly likely to result in mutations and/or rearrangements. Therefore, OriGene does not guarantee the capability to replicate this plasmid DNA. Additional amounts of DNA can be purchased from OriGene with batch-specific, full-sequence verification at a reduced cost. Please contact our customer care team at custsupport@origene.com or by calling 301.340.3188 option 3 for pricing and delivery.

The molecular sequence of this clone aligns with the gene accession number as a point of reference only. However, individual transcript sequences of the same gene can differ through naturally occurring variations (e.g. polymorphisms), each with its own valid existence. This clone is substantially in agreement with the reference, but a complete review of all prevailing variants is recommended prior to use. [More info](#)

OTI Annotation: This clone was engineered to express the complete ORF with an expression tag. Expression varies depending on the nature of the gene.

Components:	The ORF clone is ion-exchange column purified and shipped in a 2D barcoded Matrix tube containing 10ug of transfection-ready, dried plasmid DNA (reconstitute with 100 ul of water).
Reconstitution Method:	<ol style="list-style-type: none"> 1. Centrifuge at 5,000xg for 5min. 2. Carefully open the tube and add 100ul of sterile water to dissolve the DNA. 3. Close the tube and incubate for 10 minutes at room temperature. 4. Briefly vortex the tube and then do a quick spin (less than 5000xg) to concentrate the liquid at the bottom. 5. Store the suspended plasmid at -20°C. The DNA is stable for at least one year from date of shipping when stored at -20°C.
RefSeq:	<u>NM_052835.3</u> , <u>NP_443067.1</u>
RefSeq Size:	798 bp
RefSeq ORF:	645 bp
Locus ID:	110954
UniProt ID:	<u>Q6ZWW3</u>
Cytogenetics:	X 37.94 cM
Gene Summary:	Component of the large ribosomal subunit. Plays a role in the formation of actively translating ribosomes. May play a role in the embryonic brain development. [UniProtKB/Swiss-Prot Function]

Product images:


Circular map for MG202351