

Product datasheet for **MG202334**

Nicn1 (NM_025449) Mouse Tagged ORF Clone

Product data:

Product Type: Expression Plasmids
Tag: TurboGFP
Symbol: Nicn1
Synonyms: 1500032A17Rik
Mammalian Cell Selection: Neomycin
Vector: pCMV6-AC-GFP (PS100010)
E. coli Selection: Ampicillin (100 ug/mL)

ORF Nucleotide Sequence: >MG202334 representing NM_025449
Red=Cloning site Blue=ORF Green=Tags(s)

TTTTGTAATACGACTCACTATAGGGCGGCCGGGAATTCGTCGACTGGATCCGGTACCGAGGAGATCTGCC
GCCGCGATCGCC

ATGTCCCGTGTGTTGGTGCCCTGTCATGTGAAAAGCACTGTAGCCCTGCAAGTGGGCGACATGAGGACCT
CTCAAGGTCGGCCTGGCGTGTGGTCGTCGATGTCACCTTTCCCAACATCGCGCCTTTCGAGTTGCAGGA
GATCATGTTAAGAATTACTACACAGCTTTCTTGAGCATCCGTGTTTCGTCACAAAGCTCCATGCACACA
GCAGCCAAGTGGGTAACCTTGCTTCGGGATTACTGTTTGATGCCTGACCCACACAGTGAAGAGGGAGCCC
AGGACTATGTATCACTGTTCAAGCACCAGATGCTGTGTGACATGAACAGAGTGTGGAGCTGCGTCTGAT
TCTGCGGCAGCCATCACCAGTGGCTGTCTTTCACAGTGGAGGAAGTGCAGATCTACCAACAGGGACCA
AAGAGCCCCTCCTTGCGGTTCCCAAGTGGCTTCCCAAGTGTCCAATGAGCAGCCTGCTCCCCGCC
TTGAGGGTCTCCAGATCCAGCAGAGTGTCTCTGAGGTGCAGCAGATGTGGGCACTGACAGAGATGAT
TCGGGCTAGTCACACTCCACGAGGATCGGCCGCTTCGACGTGGATGGCTTATGATCTGAATTTACT
TCCTACACA

ACGCGTACGCGGCCGCTCGAG - GFP Tag - GTTTAA

Protein Sequence: >MG202334 representing NM_025449
Red=Cloning site Green=Tags(s)

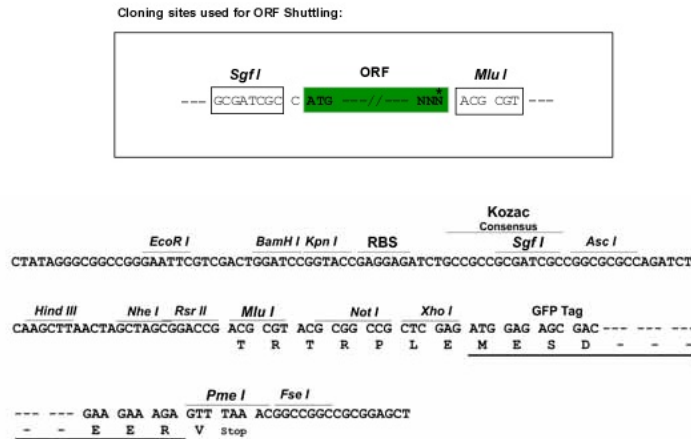
MSRVLVPCHKSTVALQVDMRTSQRPGVLVVDVTFPNIAPFELQEIMFKNYTAFLSIRVRQQSSMHT
AAKWVTLRDYCLMPDPHSEEGAQDYVSLFKHQMLCDMNRVLELRILRQPSPLWLSFTVEELQIYQQGP
KSPSLAFPKWLSHPVSNQAPRLEGLPDPSPRSVSEVQMMWALTEMIRASHTSTRIGRFDVDGCDLNL
SYT

TRTRPLE - GFP Tag - V



Restriction Sites: SgfI-MluI

Cloning Scheme:



ACCN: NM_025449

ORF Size: 639 bp

OTI Disclaimer: The molecular sequence of this clone aligns with the gene accession number as a point of reference only. However, individual transcript sequences of the same gene can differ through naturally occurring variations (e.g. polymorphisms), each with its own valid existence. This clone is substantially in agreement with the reference, but a complete review of all prevailing variants is recommended prior to use. [More info](#)

OTI Annotation: This clone was engineered to express the complete ORF with an expression tag. Expression varies depending on the nature of the gene.

Components: The ORF clone is ion-exchange column purified and shipped in a 2D barcoded Matrix tube containing 10ug of transfection-ready, dried plasmid DNA (reconstitute with 100 ul of water).

Reconstitution Method:

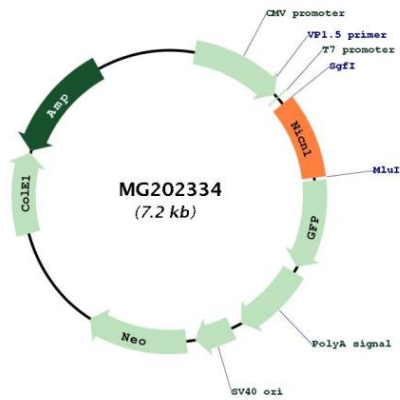
1. Centrifuge at 5,000xg for 5min.
2. Carefully open the tube and add 100ul of sterile water to dissolve the DNA.
3. Close the tube and incubate for 10 minutes at room temperature.
4. Briefly vortex the tube and then do a quick spin (less than 5000xg) to concentrate the liquid at the bottom.
5. Store the suspended plasmid at -20°C. The DNA is stable for at least one year from date of shipping when stored at -20°C.

Note: Plasmids are not sterile. For experiments where strict sterility is required, filtration with 0.22um filter is required.

RefSeq: [NM_025449.4](#)

RefSeq Size: 2103 bp
 RefSeq ORF: 642 bp
 Locus ID: 66257
 UniProt ID: [Q9CQM0](#)
 Cytogenetics: 9 F1

Product images:



Circular map for MG202334