

Product datasheet for **MG202327**

Gm609 (NM_001005854) Mouse Tagged ORF Clone

Product data:

Product Type:	Expression Plasmids
Product Name:	Gm609 (NM_001005854) Mouse Tagged ORF Clone
Tag:	TurboGFP
Symbol:	Gm609
Synonyms:	Gm1749; isec1
Mammalian Cell Selection:	Neomycin
Vector:	pCMV6-AC-GFP (PS100010)
E. coli Selection:	Ampicillin (100 ug/mL)
ORF Nucleotide Sequence:	>MG202327 representing NM_001005854 Red=Cloning site Blue=ORF Green=Tags(s)

TTTTGTAATACGACTCACTATAGGGCGGCCGGAATTCGTCGACTGGATCCGGTACCGAGGAGATCTGCC
GCC**CGATCGCC**

ATGACTATCCAAGGAGTGACATTTGAAGATGAAGCCTGCTACAAGTGTCTGTTAACTTTCCACATG
GCAGCCATGGAGGACAAACCTGCCTCACCATTAACTGTATCTGAACTGGTAACTGAGCTCCGGTCTGC
TCCTGGCTCTGAAGATCTTCATAGCCTTCTTTGTTTCAGCTGTGGGAAAGCCTGCCCTGGAATCTCCGTT
TACCCTTCACAAGTCACAGTGCAGGCACCGCAAGAGTACTTTGCTCAGAACGCCAATGCCACGGTGACTG
TACTAAAATCTACAACATCTCTTTGAAAAGTGCAGGTCCTGGGTCTCCAGGACTTGGTTGTGTCCAT
GACTCACTCCGTAAGAAATGAAGAGAAAATAGTCCGATTGCCAGTCAATCAAGGAGTACCACGAATCCT
TGTTTAACTGGATGATAACTGCGATTGCATTCATTTTTGTTTTGTTTTCATGCATCATCAGTGCTG
TTCTCTACATTTATTTCCAAAAGAAAAGGTCAAATAACATGCCCGAGCCATCATCAACACAGATGCCTAA
CCCCTATCAACTGGTACCCACACCACCATCAACAGAGACTGAGAAGTAAATGAGACATCACTGCCAG
TCTGAGACA

ACGCGTACGCGGCCGCTCGAG - GFP Tag - GTTTAA



[View online »](#)

Protein Sequence: >MG202327 representing NM_001005854
 Red=Cloning site Green=Tags(s)

MTIQGVTFEDEACYKCLFNTFPHGSHGGQTCLTIITVSELVTELRAPGSEDLHSLLLCSAVGKPPAGISV
 YPSQVTVQAPQEYFAQNANATVTVTKIYNI SLKTARSLGLQDLVSMTHSVRNEEKIVRLPVNQGGTTNP
 CLNWMITAIAFIILFLVSCIISAVLYIYFQKKRSNNMPEPSSSTQMPNPLSTLVPTPPSTETENLMRHHCQ
 SET

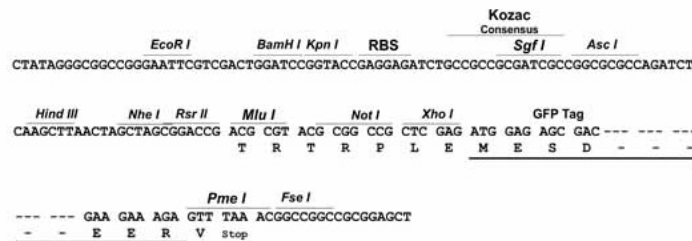
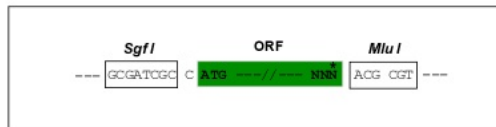
TRTRPLE - GFP Tag - V

Chromatograms: https://cdn.origene.com/chromatograms/ja1694_e05.zip

Restriction Sites: SgfI-MluI

Cloning Scheme:

Cloning sites used for ORF Shuttling:



ACCN: NM_001005854

ORF Size: 639 bp

OTI Disclaimer: The molecular sequence of this clone aligns with the gene accession number as a point of reference only. However, individual transcript sequences of the same gene can differ through naturally occurring variations (e.g. polymorphisms), each with its own valid existence. This clone is substantially in agreement with the reference, but a complete review of all prevailing variants is recommended prior to use. [More info](#)

OTI Annotation: This clone was engineered to express the complete ORF with an expression tag. Expression varies depending on the nature of the gene.

Components: The ORF clone is ion-exchange column purified and shipped in a 2D barcoded Matrix tube containing 10ug of transfection-ready, dried plasmid DNA (reconstitute with 100 ul of water).

Reconstitution Method:

1. Centrifuge at 5,000xg for 5min.
2. Carefully open the tube and add 100ul of sterile water to dissolve the DNA.
3. Close the tube and incubate for 10 minutes at room temperature.
4. Briefly vortex the tube and then do a quick spin (less than 5000xg) to concentrate the liquid at the bottom.
5. Store the suspended plasmid at -20°C. The DNA is stable for at least one year from date of shipping when stored at -20°C.

RefSeq: [NM_001005854.1](#), [NP_001005854.1](#)

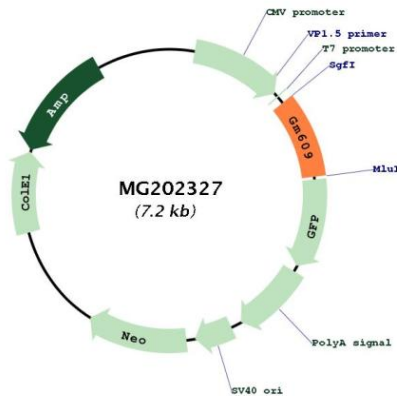
RefSeq Size: 2149 bp

RefSeq ORF: 903 bp

Locus ID: 208166

Cytogenetics: 16 B5

Product images:



Circular map for MG202327