

Product datasheet for **MG202296**

Crybb3 (NM_021352) Mouse Tagged ORF Clone

Product data:

Product Type: Expression Plasmids
Tag: TurboGFP
Symbol: Crybb3
Synonyms: A1852419
Mammalian Cell Selection: Neomycin
Vector: pCMV6-AC-GFP (PS100010)
E. coli Selection: Ampicillin (100 ug/mL)

ORF Nucleotide Sequence: >MG202296 representing NM_021352
Red=Cloning site Blue=ORF Green=Tags(s)

TTTTGTAATACGACTACTATAGGGCGGCCGGGAATTCGTCGACTGGATCCGGTACCGAGGAGATCTGCC
GCC**GCGATCGCC**

ATGGCCGAGCAGCAGCGGACACCTGAGCAGGCTGCAGCTGGCAAGAGCCATGGAGGCCCTGGGGGAGCT
ACAAGGTGACGGTGTACGAGTTAGAGAACTTCCAGGGCAAGCGATGCGAGCTCTCGGCCGAGTGTCCAA
CCTCACCGACAGCCTGTTGGAGAAGGTGGGCTCCATCCAAGTGGAGTCTGGACCGTGGCTGGCGTTCGAG
CGCAGGGCCTTCGTGGGGAGCAGTTTGTCTGGAGAAGGGGGACTACCCTCGCTGGGATGCCTGGTCCA
GCAGCCGACGTAGTGACATTCCTGTCCCTCCGTCCTTTGCACATTGATGGCCCAGACCACAAGCTGCA
CCTGTTTGAGAACCAGCCTTCAGTGGGCGCAAGATGGAGATCGTAGATGACGATGTGCCACGCCTGTGG
GCCCATGGTTTCCAGGACCGTGTGGCCAGCATCCGTGTCAACGGGACGTGGGTGGGCTACGAGTTCC
CGGGCTACCGTGGGCGCCAGTACGTGTTGAGCGGGGCGAATTCGCCACTGGAACGAGTGGGACGCCAA
CCAGCCGACGCTGCAGTCGGTGCGCCGCATCCGCGACCAGAAGTGGCACAAGCGCGGCTGCTTCTGAGC
AGC

ACGCGTACGCGGCCGCTCGAG - GFP Tag - GTTTAA

Protein Sequence: >MG202296 representing NM_021352
Red=Cloning site Green=Tags(s)

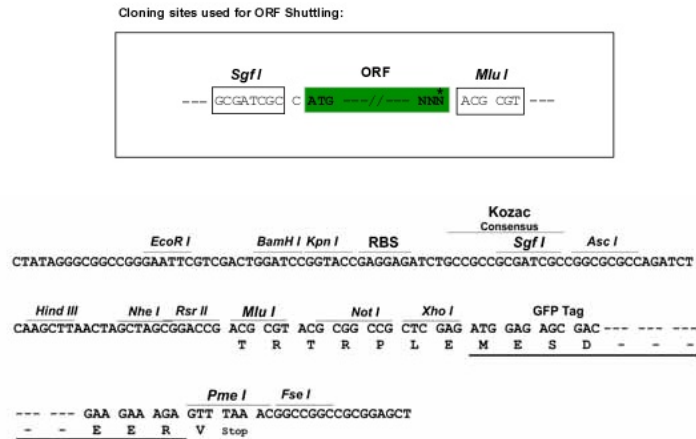
MAEQHGAPEQAAAGKSHGGLGGSYKVTVYELNFQGKRCELSAECPNLTDLSLLEKVGSIQVESGPWLAFE
RRAFRGEQFVLEKGDYPRWDWSSRRSDILLSLRPLHIDGPDHKLHLFENPAFSGRKMIEIVDDVPSLW
AHGFQDRVASIRVINGTWVGYEFPYGRQYVFERGEFRHWNEWDANQPQLQSVRRIRDQKWHKRGCFLS
S

TRTRPLE - GFP Tag - V



Restriction Sites: SgfI-MluI

Cloning Scheme:



ACCN: NM_021352

ORF Size: 633 bp

OTI Disclaimer: The molecular sequence of this clone aligns with the gene accession number as a point of reference only. However, individual transcript sequences of the same gene can differ through naturally occurring variations (e.g. polymorphisms), each with its own valid existence. This clone is substantially in agreement with the reference, but a complete review of all prevailing variants is recommended prior to use. [More info](#)

OTI Annotation: This clone was engineered to express the complete ORF with an expression tag. Expression varies depending on the nature of the gene.

Components: The ORF clone is ion-exchange column purified and shipped in a 2D barcoded Matrix tube containing 10ug of transfection-ready, dried plasmid DNA (reconstitute with 100 ul of water).

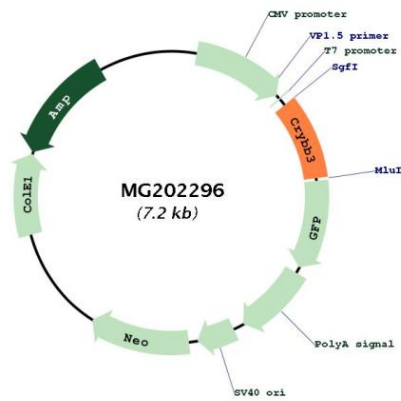
Reconstitution Method:

1. Centrifuge at 5,000xg for 5min.
2. Carefully open the tube and add 100ul of sterile water to dissolve the DNA.
3. Close the tube and incubate for 10 minutes at room temperature.
4. Briefly vortex the tube and then do a quick spin (less than 5000xg) to concentrate the liquid at the bottom.
5. Store the suspended plasmid at -20°C. The DNA is stable for at least one year from date of shipping when stored at -20°C.

Note: Plasmids are not sterile. For experiments where strict sterility is required, filtration with 0.22um filter is required.

RefSeq: [NM_021352.3](#)

RefSeq Size:	948 bp
RefSeq ORF:	636 bp
Locus ID:	12962
UniProt ID:	Q9JJU9
Cytogenetics:	5 55.38 cM
Gene Summary:	Crystallins are the dominant structural components of the vertebrate eye lens. [UniProtKB/Swiss-Prot Function]

Product images:

Circular map for MG202296