

## Product datasheet for **MG202278**

### Rhod (NM\_007485) Mouse Tagged ORF Clone

#### Product data:

**Product Type:** Expression Plasmids  
**Product Name:** Rhod (NM\_007485) Mouse Tagged ORF Clone  
**Tag:** TurboGFP  
**Symbol:** Rhod  
**Synonyms:** AI326383; Arhd; Rho; RhoHP1; RhoM  
**Mammalian Cell Selection:** Neomycin  
**Vector:** pCMV6-AC-GFP (PS100010)  
**E. coli Selection:** Ampicillin (100 ug/mL)  
**ORF Nucleotide Sequence:** >MG202278 representing NM\_007485  
Red=Cloning site Blue=ORF Green=Tags(s)

TTTTGTAATACGACTCACTATAGGGCGGCCGGAATTCGTCGACTGGATCCGGTACCGAGGAGATCTGCC  
GCC**CGATCGCC**

ATGAACGCGTCCCAGGTTGCGGGAGAAGAGGCGCCGAGAGCGGGCACTCGGTCAAGGTGGTCTGGTGG  
GCGACGGGGCTGCGGGAAGACGTCCTGATGATGGTCTTCGCCAAAGGGGCCTCCAGAGAGCTACAG  
TCCCACAGTGTGGAGCGCTATAATGCCACTCTGCAGATGAAGGGTAAACCTGTGCACCTCCAAATCTGG  
GACACAGCGGGCAAGATGACTATGACCGCCTCCGGCCCTGTTCTATCCTGATGCCAATGTCTTGCTCC  
TCTGCTTCGATGTGACCAATCCAAACAGCTTTGACAACGCTCTCCAACCGTGGTACCCAGAGGTGACACA  
TTTCTGCAAGGGAGTGCCATCATTGTTGTGGGCTGCAAGATAGACCTGGGTAAGGACAAGGTGCTGGTG  
AAACAACCTGCGGAAGAAAAGACTGGAGCCCGTGACCTACCACAGGGGCCACGATATGGCAAGGTCTGTGG  
GAGCGGTGGCCTATCTTGAGTGTTCAGCTCGGCTCCATGACAACGTGGAAGCCGCTTCCAGGAAGCAGC  
AGAAGTGGCTCTCAGCAGTCGCAGACATAACTTTGGCGGCGGATTACTCAGAATTGTTGCTTGGCCACC

AG**CGGACCG**ACGCGTACGCGGCCGCTCGAG - GFP Tag - GTTTAA

**Protein Sequence:** >MG202278 representing NM\_007485  
Red=Cloning site Green=Tags(s)

MNASQVAGEEAPQSGHSVKVVLVDGGCGKTSLMMVFAKGAFPEYSPTVFERYNATLQMKGKPVHLQIWI  
DTAGQDDYDRLRPLFYDPANVLLLCFDVTPNPSFDNVSNRWYPEVTHFCKGVPIIIVGCKIDLRKDKVLV  
NNLRKKRLEPVTYHRGHDMARSVGAVAYLECSARLHDNVEAVFQEAEEVALSSRRHNFWRITQNCCLAT

SGP**TRRRLE** - GFP Tag - V

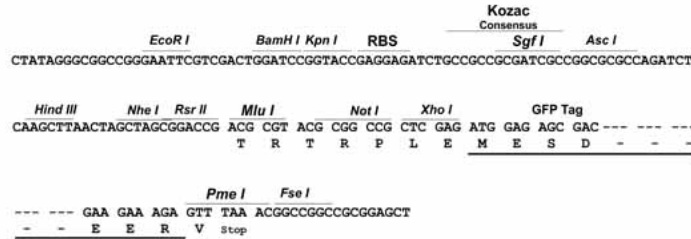
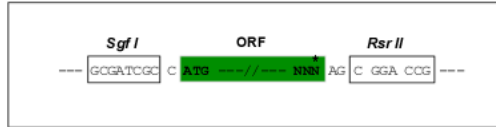
**Restriction Sites:** Sgfl-RsrII



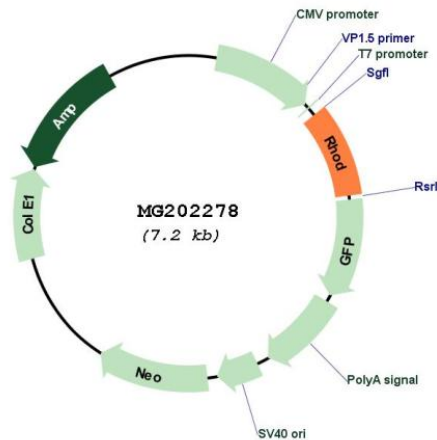
[View online »](#)

Cloning Scheme:

Cloning sites used for ORF Shuttling:



Plasmid Map:



ACCN: NM\_007485

ORF Size: 630 bp

OTI Disclaimer: The molecular sequence of this clone aligns with the gene accession number as a point of reference only. However, individual transcript sequences of the same gene can differ through naturally occurring variations (e.g. polymorphisms), each with its own valid existence. This clone is substantially in agreement with the reference, but a complete review of all prevailing variants is recommended prior to use. [More info](#)

OTI Annotation: This clone was engineered to express the complete ORF with an expression tag. Expression varies depending on the nature of the gene.

Components: The ORF clone is ion-exchange column purified and shipped in a 2D barcoded Matrix tube containing 10ug of transfection-ready, dried plasmid DNA (reconstitute with 100 ul of water).

**Reconstitution Method:**

1. Centrifuge at 5,000xg for 5min.
2. Carefully open the tube and add 100ul of sterile water to dissolve the DNA.
3. Close the tube and incubate for 10 minutes at room temperature.
4. Briefly vortex the tube and then do a quick spin (less than 5000xg) to concentrate the liquid at the bottom.
5. Store the suspended plasmid at -20°C. The DNA is stable for at least one year from date of shipping when stored at -20°C.

**RefSeq:** [NM\\_007485.5](#)

**RefSeq Size:** 1339 bp

**RefSeq ORF:** 633 bp

**Locus ID:** 11854

**UniProt ID:** [P97348](#)

**Cytogenetics:** 19 A

**Gene Summary:** Involved in endosome dynamics. May coordinate membrane transport with the function of the cytoskeleton. Involved in the internalization and trafficking of activated tyrosine kinase receptors such as PDGFRB. Participates in the reorganization of actin cytoskeleton; the function seems to involve WHAMM and includes regulation of filopodia formation and actin filament bundling. Can modulate the effect of DAPK3 in reorganization of actin cytoskeleton and focal adhesion dissolution.[UniProtKB/Swiss-Prot Function]