

## Product datasheet for **MG202256**

### Thap1 (NM\_199042) Mouse Tagged ORF Clone

#### Product data:

**Product Type:** Expression Plasmids  
**Product Name:** Thap1 (NM\_199042) Mouse Tagged ORF Clone  
**Tag:** TurboGFP  
**Symbol:** Thap1  
**Synonyms:** 4833431A01Rik; AW490810  
**Mammalian Cell Selection:** Neomycin  
**Vector:** pCMV6-AC-GFP (PS100010)  
**E. coli Selection:** Ampicillin (100 ug/mL)  
**ORF Nucleotide Sequence:** >MG202256 representing NM\_199042  
 Red=Cloning site Blue=ORF Green=Tags(s)

TTTTGTAATACGACTCACTATAGGGCGGCCGGAATTCGTCGACTGGATCCGGTACCGAGGAGATCTGCC  
 GCC**CGATCGCC**

ATGGTGCAGTCTGCTCCGCCTACGGCTGCAAGAACCCTACGACAAGGACAAGCCCGTCTCCTTCCACA  
 AGTTTCTCTTACTCGCCCCAGCCTTTGTAAGCAGTGGGAGGCAGCTGTTAAAAGGAAAACTTCAAGCC  
 CACCAAGTACAGCAGCATCTGCTCGGAGCACTTACCCCCGACTGCTTTAAGAGGGAGTGAACAACAAG  
 CTACTGAAGGAGAACGCTGTGCCACAATATTTCTCTATATCGAGCCACATGAGAAGAAGGAAGACCTGG  
 AATCCCAAGAACAGCTCCCTCTCCTTACCCCCGCTTCCCAGTTGATGCTGCTATTGGGCTGCTAAT  
 GCCCCTCTGCAGACCCCTGATAACCTGTGGTTTTCTGTGACCACAATTACACTGTGGAGGATACGATG  
 CACCAGAGGAAGAGGATCCTGCAGCTGGAGCAGCAGGTGGAGAACTCAGGAAGAAGCTCAAGACGGCCC  
 AGCAGCGGTGCCGGCGCAGGAGAGGCAGCTCGAGAAGCTCAAGGAAGTCGTCCTTTTCAGAGAGAGAA  
 GGACGACGCGTCCGAGAGGGGCTACGTGATCCTACCAATGACTACTTTGAAATTGTTGAAGTCCAGCA

AG**CGGACCG**ACGCGTACGCGGCCGCTCGAG - GFP Tag - GTTTAA

**Protein Sequence:** >MG202256 representing NM\_199042  
 Red=Cloning site Green=Tags(s)

MVQSCSAYGCKNRYDKDKPVSFHKFPLTRPSLCKQWEAAVKRKNFKPTKYSSICSEHFTPDCFKRECNNK  
 LLKENAVPTIFLYIEPHEKKEDLESQEQLPSPSPASQVDAAIGLLMPPLQTPDNLVSVFCDHNYTVEDTM  
 HQRKRILQLEQQVEKLRKLLKTAQQRRCRRQERQLEKLEVVHFQREKDDASERGYVILPNDYFEIVEVPA

SGP**TRRRLE** - GFP Tag - V

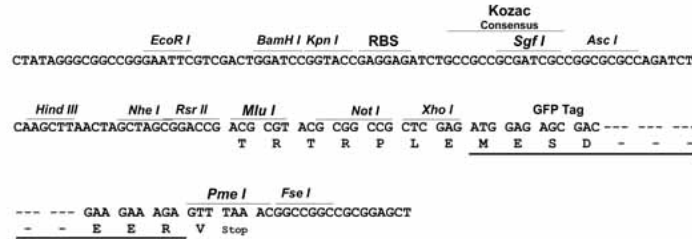
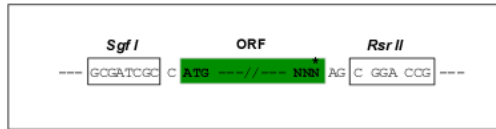
**Restriction Sites:** Sgfl-RsrII



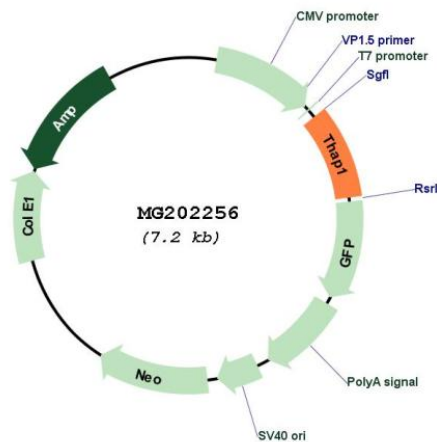
[View online »](#)

Cloning Scheme:

Cloning sites used for ORF Shuttling:



Plasmid Map:



ACCN: NM\_199042

ORF Size: 630 bp

OTI Disclaimer: The molecular sequence of this clone aligns with the gene accession number as a point of reference only. However, individual transcript sequences of the same gene can differ through naturally occurring variations (e.g. polymorphisms), each with its own valid existence. This clone is substantially in agreement with the reference, but a complete review of all prevailing variants is recommended prior to use. [More info](#)

OTI Annotation: This clone was engineered to express the complete ORF with an expression tag. Expression varies depending on the nature of the gene.

Components: The ORF clone is ion-exchange column purified and shipped in a 2D barcoded Matrix tube containing 10ug of transfection-ready, dried plasmid DNA (reconstitute with 100 ul of water).

**Reconstitution Method:**

1. Centrifuge at 5,000xg for 5min.
2. Carefully open the tube and add 100ul of sterile water to dissolve the DNA.
3. Close the tube and incubate for 10 minutes at room temperature.
4. Briefly vortex the tube and then do a quick spin (less than 5000xg) to concentrate the liquid at the bottom.
5. Store the suspended plasmid at -20°C. The DNA is stable for at least one year from date of shipping when stored at -20°C.

**RefSeq:** [NM\\_199042.2](#)

**RefSeq Size:** 1027 bp

**RefSeq ORF:** 633 bp

**Locus ID:** 73754

**UniProt ID:** [Q8CHW1](#)

**Cytogenetics:** 8 A2

**Gene Summary:** DNA-binding transcription regulator that regulates endothelial cell proliferation and G1/S cell-cycle progression. Specifically binds the 5'-[AT]NTNN[GT]GGCA[AGT]-3' core DNA sequence and acts by modulating expression of pRB-E2F cell-cycle target genes, including RRM1. Component of a THAP1/THAP3-HCFC1-OGT complex that is required for the regulation of the transcriptional activity of RRM1. May also have pro-apoptotic activity by potentiating both serum-withdrawal and TNF-induced apoptosis (By similarity).[UniProtKB/Swiss-Prot Function]