

Product datasheet for **MG202249**

Efna2 (NM_007909) Mouse Tagged ORF Clone

Product data:

Product Type: Expression Plasmids
Product Name: Efna2 (NM_007909) Mouse Tagged ORF Clone
Tag: TurboGFP
Symbol: Efna2
Synonyms: CEK7L; Elf1; Epl6; Eplg6; Lerk6
Mammalian Cell Selection: Neomycin
Vector: pCMV6-AC-GFP (PS100010)
E. coli Selection: Ampicillin (100 ug/mL)
ORF Nucleotide Sequence: >MG202249 representing NM_007909
 Red=Cloning site Blue=ORF Green=Tags(s)

TTTTGTAATACGACTCACTATAGGGCGCCGGGAATTCGTCGACTGGATCCGGTACCGAGGAGATCTGCC
 GCC**CGATCGCC**

ATGGCGCCCGCGCAGCGCCCGCTGCTGCCGCTGCTGCTGCTGCTGCTGCTGCCGCTGCGTGCCGCAACGAGG
 ACCCGGCCGGGCAACGCTGACCGATACGAGTCTACTGGAACCGTAGCAACCCAGGTTTCAGGTGAG
 CGCTGTGGGTGATGGCGGCGCTATACCGTGGAGGTGAGCATCAACGACTACCTGGATATCTACTGCCCA
 CACTACGGGGCGCCGCTGCCCGGCTGAGCGCATGGAGCGGTACATCCTGTACATGGTGAATGGTGAAG
 GCCACGCCTCCTGTGACCACCGCAGCGAGGCTTCAAGCGCTGGGAATGCAACCGCCCGCAGCGCCCGG
 GGGACCCCTCAAGTTCTCAGAGAAGTTCCAACCTTACCCCTTTCCCTGGGCTTTGAGTTCCGGCT
 GGCCACGAATACTACTACATCTCTGCCACACCTCCCAACCTCGTGGACCGACCCTGCCTGCGACTCAAGG
 TTTATGTGCGTCCAACCAATGAGACCCTGTATGAGGCTCCAGAGCCCATCTTACCAGTAACAGCTCCTG
 CAGCGGCTGGGTGGCTGCCACCTTCTCTCACCACCGTCCCTGTGCTGTGGTCCCTTCTGGGCTCC

ACGCGTACGCGGCCGCTCGAG - GFP Tag - GTTTAA

Protein Sequence: >MG202249 representing NM_007909
 Red=Cloning site Green=Tags(s)

MAPAQRPLLLLLLLPLRARNEDPARANADRYAVYWNRSNPRFQVAVGDGGGYTVEVSINDYLDIYCP
 HYGAPLPPAERMERYILYMVNNEGHASCDHRQRFKRWECNRPAAAPGGPLKFSEKFLFTPFSLGFEFRRP
 GHEYYYISATPPNLVDRPCLRLKVVYRPTNETLYEAPEPIFTSNSSCSGLGGCHLFLTTVPVLWLLGS

TRTRPLE - GFP Tag - V

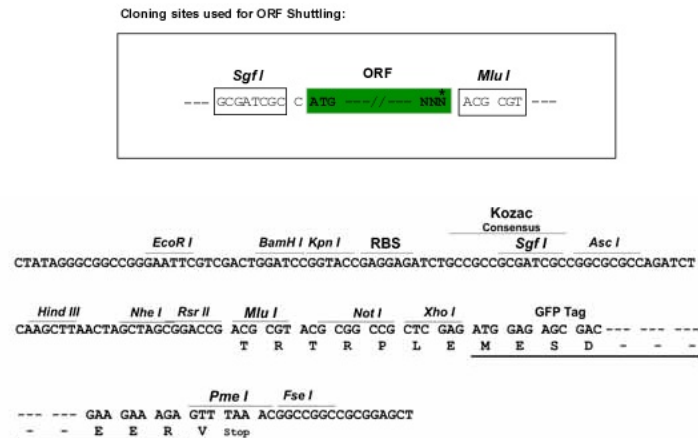
Chromatograms: https://cdn.origene.com/chromatograms/ja2001_f02.zip



[View online »](#)

Restriction Sites: SgfI-MluI

Cloning Scheme:



ACCN: NM_007909

ORF Size: 627 bp

OTI Disclaimer: The molecular sequence of this clone aligns with the gene accession number as a point of reference only. However, individual transcript sequences of the same gene can differ through naturally occurring variations (e.g. polymorphisms), each with its own valid existence. This clone is substantially in agreement with the reference, but a complete review of all prevailing variants is recommended prior to use. [More info](#)

OTI Annotation: This clone was engineered to express the complete ORF with an expression tag. Expression varies depending on the nature of the gene.

Components: The ORF clone is ion-exchange column purified and shipped in a 2D barcoded Matrix tube containing 10ug of transfection-ready, dried plasmid DNA (reconstitute with 100 ul of water).

Reconstitution Method:

1. Centrifuge at 5,000xg for 5min.
2. Carefully open the tube and add 100ul of sterile water to dissolve the DNA.
3. Close the tube and incubate for 10 minutes at room temperature.
4. Briefly vortex the tube and then do a quick spin (less than 5000xg) to concentrate the liquid at the bottom.
5. Store the suspended plasmid at -20°C. The DNA is stable for at least one year from date of shipping when stored at -20°C.

RefSeq: [NM_007909.3](#), [NP_031935.3](#)

RefSeq Size: 2153 bp

RefSeq ORF: 630 bp

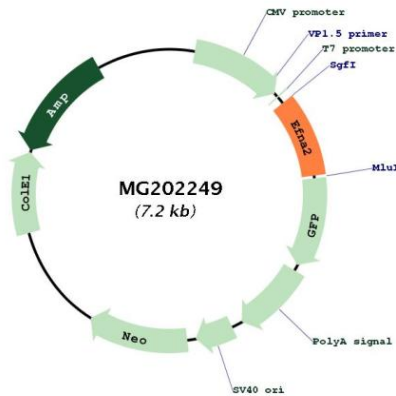
Locus ID: 13637

UniProt ID: [P52801](#)

Cytogenetics: 10 39.72 cM

Gene Summary: Cell surface GPI-bound ligand for Eph receptors, a family of receptor tyrosine kinases which are crucial for migration, repulsion and adhesion during neuronal, vascular and epithelial development. Binds promiscuously Eph receptors residing on adjacent cells, leading to contact-dependent bidirectional signaling into neighboring cells. The signaling pathway downstream of the receptor is referred to as forward signaling while the signaling pathway downstream of the ephrin ligand is referred to as reverse signaling. With the EPHA2 receptor may play a role in bone remodeling through regulation of osteoclastogenesis and osteoblastogenesis.[UniProtKB/Swiss-Prot Function]

Product images:



Circular map for MG202249