

## Product datasheet for **MG202204**

### Rab8b (NM\_173413) Mouse Tagged ORF Clone

#### Product data:

**Product Type:** Expression Plasmids  
**Product Name:** Rab8b (NM\_173413) Mouse Tagged ORF Clone  
**Tag:** TurboGFP  
**Symbol:** Rab8b  
**Synonyms:** 5930437D16; D330025I23Rik  
**Mammalian Cell Selection:** Neomycin  
**Vector:** pCMV6-AC-GFP (PS100010)  
**E. coli Selection:** Ampicillin (100 ug/mL)  
**ORF Nucleotide Sequence:** >MG202204 representing NM\_173413  
Red=Cloning site Blue=ORF Green=Tags(s)

TTTTGTAATACGACTCACTATAGGGCGGCCGGAATTCGTCGACTGGATCCGGTACCGAGGAGATCTGCC  
GCC**CGATCGCC**

ATGGCGAAGACGTACGATTATCTGTTCAAGCTGCTGCTCATCGGCGACTCCGGCGTTGGCAAGACCTGCC  
TCCTGTTCCGCTTCTCAGAGGACGCCTTCAACACCACCTTTATCTCCACCATCGGAATTGATTTTAAAT  
CAGAACGATAGAAGTACGACGAAAGAAAATTAACCTTCAGATATGGGACACGGCGGCCAGGAAAGATTC  
CGAACAAATTACGACAGCATACTATAGAGGAGCCATGGGAATTATGCTGGTCTATGACATACCAATGAAA  
AATCCTTTGACAATATTAATAATGGATAAAGAAACATTGAAGAGCACGCCTTTCAGATGTTGAAAGAAT  
GATCCTGGGTAACAAATGTGATATGAACGACAAAAGACAAGTGTGAAAGAGAGAGGGGAGAAGTTAGCA  
ATTGACTATGGGATTAATTTTTGGAGACAAGTGCAAAGTCGAGTACAAATGTAGAAGAGGCATTTTTTA  
CACTTGCACGGGATATAATGACAAAACCAACAGGAAAATGAACGACAGCAATTCATCAGGAGCAGGTGG  
GCCAGTGAAGATAACAGAGAGCCGGTCTAAGAAGACCAGTTTCTCCGCTGTTCTCTGCTT

**ACGCGTACGCGGCCGCTCGAG** - GFP Tag - GTTTAA

**Protein Sequence:** >MG202204 representing NM\_173413  
Red=Cloning site Green=Tags(s)

MAKTYDYLFKLLLIGDSGVGKTCLLFRFSEDAFNNTFISTIGIDFKIRTIELDGKKIKLQIWDTAGQERF  
RTITTAYYRGAMGIMLVYDITNEKSFNKNWIRNIEEHASSDVERMILGNKCDMNDKRQVSKERGEKLA  
IDYGIKFLETSAKSSTNVEEAFFTLARDIMTKLNRKMNDSNSSGAGGPVKITESRSKKTFFRCSLL

**TRTRPLE** - GFP Tag - V

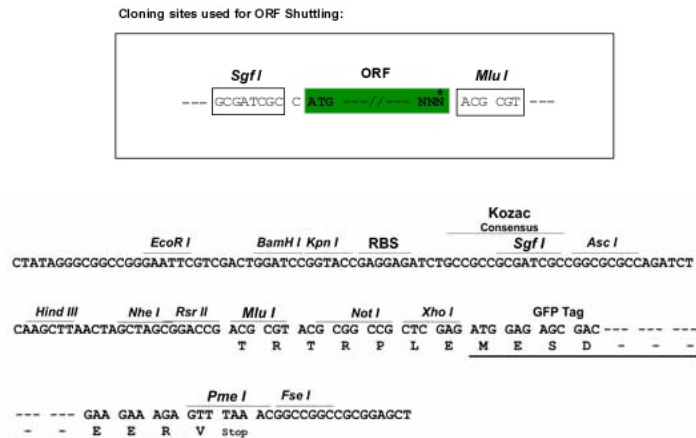
**Chromatograms:** [https://cdn.origene.com/chromatograms/ja3036\\_a12.zip](https://cdn.origene.com/chromatograms/ja3036_a12.zip)



[View online »](#)

**Restriction Sites:** Sgfl-MluI

**Cloning Scheme:**



**ACCN:** NM\_173413

**ORF Size:** 621 bp

**OTI Disclaimer:** Due to the inherent nature of this plasmid, standard methods to replicate additional amounts of DNA in E. coli are highly likely to result in mutations and/or rearrangements. Therefore, OriGene does not guarantee the capability to replicate this plasmid DNA. Additional amounts of DNA can be purchased from OriGene with batch-specific, full-sequence verification at a reduced cost. Please contact our customer care team at [custsupport@origene.com](mailto:custsupport@origene.com) or by calling 301.340.3188 option 3 for pricing and delivery.

The molecular sequence of this clone aligns with the gene accession number as a point of reference only. However, individual transcript sequences of the same gene can differ through naturally occurring variations (e.g. polymorphisms), each with its own valid existence. This clone is substantially in agreement with the reference, but a complete review of all prevailing variants is recommended prior to use. [More info](#)

**OTI Annotation:** This clone was engineered to express the complete ORF with an expression tag. Expression varies depending on the nature of the gene.

**Components:** The ORF clone is ion-exchange column purified and shipped in a 2D barcoded Matrix tube containing 10ug of transfection-ready, dried plasmid DNA (reconstitute with 100 ul of water).

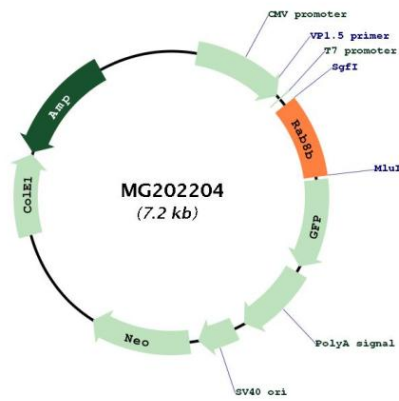
**Reconstitution Method:**

1. Centrifuge at 5,000xg for 5min.
2. Carefully open the tube and add 100ul of sterile water to dissolve the DNA.
3. Close the tube and incubate for 10 minutes at room temperature.
4. Briefly vortex the tube and then do a quick spin (less than 5000xg) to concentrate the liquid at the bottom.
5. Store the suspended plasmid at -20°C. The DNA is stable for at least one year from date of shipping when stored at -20°C.

**RefSeq:** [NM\\_173413.3](#)  
**RefSeq Size:** 4751 bp  
**RefSeq ORF:** 624 bp  
**Locus ID:** 235442  
**UniProt ID:** [P61028](#)  
**Cytogenetics:** 9 C  
**Gene Summary:**

The small GTPases Rab are key regulators of intracellular membrane trafficking, from the formation of transport vesicles to their fusion with membranes. Rabs cycle between an inactive GDP-bound form and an active GTP-bound form that is able to recruit to membranes different sets of downstream effectors directly responsible for vesicle formation, movement, tethering and fusion. That Rab may be involved in polarized vesicular trafficking and neurotransmitter release. May participate in cell junction dynamics in Sertoli cells (By similarity).[UniProtKB/Swiss-Prot Function]

**Product images:**



Circular map for MG202204