

Product datasheet for **MG202116**

Asf1a (NM_025541) Mouse Tagged ORF Clone

Product data:

Product Type: Expression Plasmids
Product Name: Asf1a (NM_025541) Mouse Tagged ORF Clone
Tag: TurboGFP
Symbol: Asf1a
Synonyms: 2310079C17Rik; C79052
Mammalian Cell Selection: Neomycin
Vector: pCMV6-AC-GFP (PS100010)
E. coli Selection: Ampicillin (100 ug/mL)
ORF Nucleotide Sequence: >MG202116 representing NM_025541
 Red=Cloning site Blue=ORF Green=Tags(s)

TTTTGTAATACGACTCACTATAGGGCGCCGGGAATTCGTCGACTGGATCCGGTACCGAGGAGATCTGCC
 GCC**CGATCGCC**

ATGGCAAAGGTTTCAGGTGAACAATGTAGTGGTCTGGATAACCCGTCGCCTTTCTACAACCCGTTCCAGT
 TCGAGATCACCTTCGAGTGCATCGAGGACCTGTCTGAAGACTTGGAGTGGAAAATAATCTATGTGGGCTC
 TGCAGAAAGTGAAGAATACGATCAAGTTTTAGACTCTGTTTTAGTGGTCCCCTTCTGCAGGAAGGCAT
 ATGTTTGTGTTTCAGGCTGATGCACCGAATGCAGGACTCATCCCAGATGCAGATGCAGTGGGGTAAACAG
 TTGTTCTGATTACTTGCACCTACCGAGGTCAAGAAATTTATTAGAGTTGGCTACTATGTAATAATGAATA
 CACTGAAACAGAAATTAAGGGAAAACCCACCACTAAAACAGACTTTTCTAAGCTTCAAAGGAATATTTTG
 GCATCTAATCCCAGAGTCACAAGATCCACATTAAGTGGGAAGATAATACAGAAAAACTGGAAGATGCAG
 AGAGCAGTAACCCAAATCTACAGTCCCTTCTTTCAACAGATGCATTACCGTCAGCGTCAAAGGGATGGTC
 CACGTCAGAAAACCTCACTCAATGTTATGTTAGAATCCCACATGGACTGCATG

ACGCGTACGCGGCCGCTCGAG - GFP Tag - GTTTAA

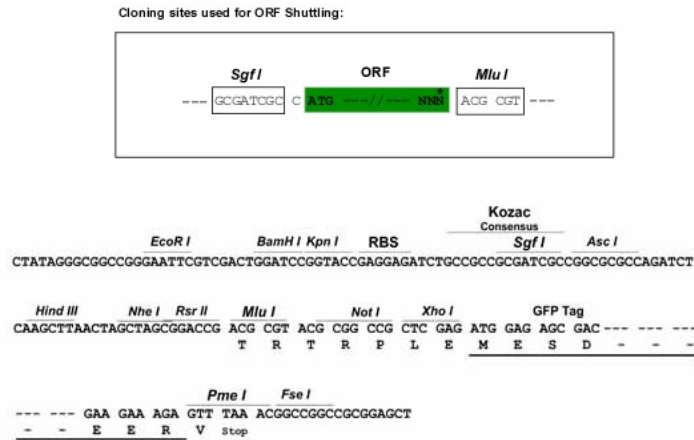
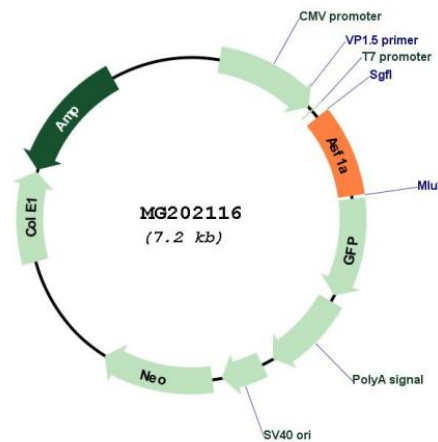
Protein Sequence: >MG202116 representing NM_025541
 Red=Cloning site Green=Tags(s)

MAKVQVNNVVLDNPSPFYNPFQFEITFECIEDLSEDLWKIIYVGSASEEYDQVLDVSVLGPVPAGRH
 MFVVFQADAPNAGLIPDADAVGVTVVLITCTYRQGEFIRVGYVNNYEYTELRENPPVKPDFSKLQRNII
 ASNPRVTRFHINWEDNTEKLEDAESSNPNLQSLSTDALPSASKGWSTSENSLVMLESHMDCM

TRTRPLE - GFP Tag - V

Restriction Sites: Sgfl-MluI



Cloning Scheme:

Plasmid Map:


ACCN: NM_025541

ORF Size: 612 bp

OTI Disclaimer: The molecular sequence of this clone aligns with the gene accession number as a point of reference only. However, individual transcript sequences of the same gene can differ through naturally occurring variations (e.g. polymorphisms), each with its own valid existence. This clone is substantially in agreement with the reference, but a complete review of all prevailing variants is recommended prior to use. [More info](#)

OTI Annotation: This clone was engineered to express the complete ORF with an expression tag. Expression varies depending on the nature of the gene.

Components: The ORF clone is ion-exchange column purified and shipped in a 2D barcoded Matrix tube containing 10ug of transfection-ready, dried plasmid DNA (reconstitute with 100 ul of water).

Reconstitution Method:

1. Centrifuge at 5,000xg for 5min.
2. Carefully open the tube and add 100ul of sterile water to dissolve the DNA.
3. Close the tube and incubate for 10 minutes at room temperature.
4. Briefly vortex the tube and then do a quick spin (less than 5000xg) to concentrate the liquid at the bottom.
5. Store the suspended plasmid at -20°C. The DNA is stable for at least one year from date of shipping when stored at -20°C.

RefSeq: [NM_025541.3](#), [NP_079817.1](#)

RefSeq Size: 2192 bp

RefSeq ORF: 615 bp

Locus ID: 66403

UniProt ID: [Q9CQE6](#)

Cytogenetics: 10 B3

Gene Summary: Histone chaperone that facilitates histone deposition and histone exchange and removal during nucleosome assembly and disassembly. Cooperates with chromatin assembly factor 1 (CAF-1) to promote replication-dependent chromatin assembly and with HIRA to promote replication-independent chromatin assembly. Required for the formation of senescence-associated heterochromatin foci (SAHF) and efficient senescence-associated cell cycle exit. [UniProtKB/Swiss-Prot Function]