

Product datasheet for **MG202069**

TagIn (NM_011526) Mouse Tagged ORF Clone

Product data:

Product Type: Expression Plasmids
Product Name: TagIn (NM_011526) Mouse Tagged ORF Clone
Tag: TurboGFP
Symbol: TagIn
Synonyms: Sm2; Sm22; Sm22a; Ws310
Mammalian Cell Selection: Neomycin
Vector: pCMV6-AC-GFP (PS100010)
E. coli Selection: Ampicillin (100 ug/mL)
ORF Nucleotide Sequence: >MG202069 representing NM_011526
 Red=Cloning site Blue=ORF Green=Tags(s)

TTTTGTAATACGACTCACTATAGGGCGCCGGGAATTCGTCGACTGGATCCGGTACCGAGGAGATCTGCC
 GCC**CGATCGCC**

ATGGCCAACAAGGGTCCATCCTACGGCATGAGCCGAGAAGTGCAGTCCAAAATTGAGAAGAAGTATGACG
 AGGAGCTGGAGGAGCGACTAGTGGAGTGGATTGTAGTGCAGTGTGGCCCTGATGTAGGCCCGCCAGATCG
 TGGGCGCCTGGGCTTCCAGGTGTGGCTGAAGAATGGTGTGATTCTGAGCAAATGGTGAACAGCCTGTAT
 CCTGAGGGATCGAAGCCAGTGAAGGTGCCTGAGAACCCACCTCCATGGTCTTTAAGCAGATGGAACAGG
 TGGCTCAATTCTGAAGGCAGCTGAAGATTATGGAGTCATCAAGACTGACATGTTCCAGACTGTTGACCT
 CTATGAAGGTAAGGATATGGCAGCAGTGCAGAGGACTCTAATGGCTTTGGGCAGTTTGGCTGTGACCAAA
 AACGATGGAAACTACCGTGGAGATCCCAACTGGTTTATGAAGAAAAGCCAGGAGCATAAGAGGGACTTCA
 CAGACAGCCAACCTGCAGGAGGGGAAGCAGTCATTGGCCTTCAAATGGGCAGCAACAGAGGAGCCTCGCA
 GGCTGGCATGACAGGCTATGGGCGACCCCGGCAGATCATCAGT

ACGCGTACGCGGCCGCTCGAG - GFP Tag - GTTTAA

Protein Sequence: >MG202069 representing NM_011526
 Red=Cloning site Green=Tags(s)

MANKGPSYGMSREVQSKIEKKYDEELEERLVEWIVVQCGPDVGRPDRGLGFQVWLKNGVILSKLVNSLY
 PEGSKPVKVPENPPSMVFKQMEQVAQFLKAAEDYGVIKTDMFQTVDL YEGKDMAAVQRTL MALGSLAVTK
 NDGNRYGDPNWFMKKAQEHRDF TDSQLQEGKHVIGLQMGSNRGASQAGMTGYGRPRQIIS

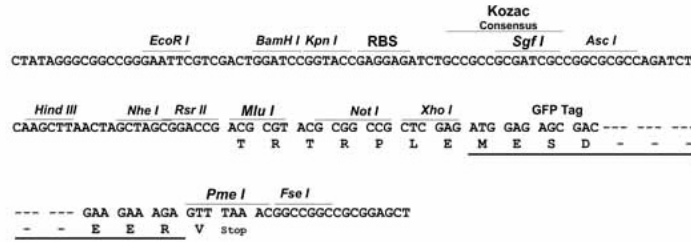
TRTRPLE - GFP Tag - V

Restriction Sites: Sgfl-MluI

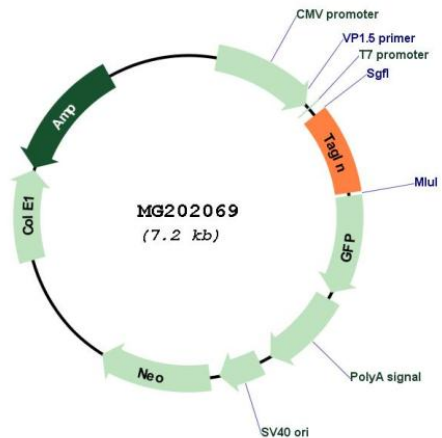


Cloning Scheme:

Cloning sites used for ORF Shutting:



Plasmid Map:



ACCN: NM_011526
 ORF Size: 603 bp

OTI Disclaimer: Due to the inherent nature of this plasmid, standard methods to replicate additional amounts of DNA in E. coli are highly likely to result in mutations and/or rearrangements. Therefore, OriGene does not guarantee the capability to replicate this plasmid DNA. Additional amounts of DNA can be purchased from OriGene with batch-specific, full-sequence verification at a reduced cost. Please contact our customer care team at custsupport@origene.com or by calling 301.340.3188 option 3 for pricing and delivery.

The molecular sequence of this clone aligns with the gene accession number as a point of reference only. However, individual transcript sequences of the same gene can differ through naturally occurring variations (e.g. polymorphisms), each with its own valid existence. This clone is substantially in agreement with the reference, but a complete review of all prevailing variants is recommended prior to use. [More info](#)

OTI Annotation: This clone was engineered to express the complete ORF with an expression tag. Expression varies depending on the nature of the gene.

Components: The ORF clone is ion-exchange column purified and shipped in a 2D barcoded Matrix tube containing 10ug of transfection-ready, dried plasmid DNA (reconstitute with 100 ul of water).

Reconstitution Method:

1. Centrifuge at 5,000xg for 5min.
2. Carefully open the tube and add 100ul of sterile water to dissolve the DNA.
3. Close the tube and incubate for 10 minutes at room temperature.
4. Briefly vortex the tube and then do a quick spin (less than 5000xg) to concentrate the liquid at the bottom.
5. Store the suspended plasmid at -20°C. The DNA is stable for at least one year from date of shipping when stored at -20°C.

RefSeq: [NM_011526.5](#)

RefSeq Size: 1429 bp

RefSeq ORF: 606 bp

Locus ID: 21345

UniProt ID: [P37804](#)

Cytogenetics: 9 25.36 cM

Gene Summary: This gene encodes a smooth muscle cell-specific cytoskeletal protein. The encoded protein is structurally similar to calponin, an actin-binding protein. In mouse models of atherosclerosis the gene product may be involved in plaque cell and atherosclerotic lesion formation during atherogenesis. [provided by RefSeq, Mar 2010]