

## Product datasheet for **MG201987**

### Tmem17 (NM\_153596) Mouse Tagged ORF Clone

#### Product data:

**Product Type:** Expression Plasmids  
**Product Name:** Tmem17 (NM\_153596) Mouse Tagged ORF Clone  
**Tag:** TurboGFP  
**Symbol:** Tmem17  
**Synonyms:** AI503894; AW049890  
**Mammalian Cell Selection:** Neomycin  
**Vector:** pCMV6-AC-GFP (PS100010)  
**E. coli Selection:** Ampicillin (100 ug/mL)  
**ORF Nucleotide Sequence:** >MG201987 representing NM\_153596  
 Red=Cloning site Blue=ORF Green=Tags(s)

TTTTGTAATACGACTCACTATAGGGCGCCGGGAATTCGTCGACTGGATCCGGTACCGAGGAGATCTGCC  
 GCC**CGATCGCC**

ATGGAGCTGCCGGACCCTGTTCCGCCAGCGCCTGAGCAACCTCAGCCTCACCGTGTTCGGCGACTCCAGCC  
 GCACCGGGCCAGAGTCCAGTGATGCGGCCGATAATGAAATGGTCTCCAGCCTGGCCTGCAGATGTCCTT  
 TTATTTAACTCTTACTTTTTCCACTGTGGTGGGTGAGCTGCATTGTGATGCTGCACCTGAAGTATTCC  
 ATCTTGCCTGACTACTACAAATTCATTGTGGTACTGTCGTCATCCTCATAACCTTGATTGAAGCGATCC  
 GGTATACTGGGCTGCATGGTAACCTTCAGGAGAAGGTTCTGAGCTAGCTGGCTTTTGCTTCTGAG  
 CCTTCTACTGCAGTTGCCTTAATCCTTTTCTTGCTCCTTAATGATGGCCTAAGGAATCTGCCCTGGAG  
 AAAGCAATACATATCATCTTCACCATCTTTCTTACTTTCCAAGTCATCTCAGCATTCTGACCCTAAAGA  
 AAATGGTCAACCAGCTGGCAGCCGTTTCCACCTCCAGGACTTTGATCAGCTGTCTTCAAGCAGTGCAGC  
 TGTAAAGGAGGTAAGACAATGCACGGAAGAGCTC

**ACGCGT**ACGCGGCCGCTCGAG - GFP Tag - GTTTAA

**Protein Sequence:** >MG201987 representing NM\_153596  
 Red=Cloning site Green=Tags(s)

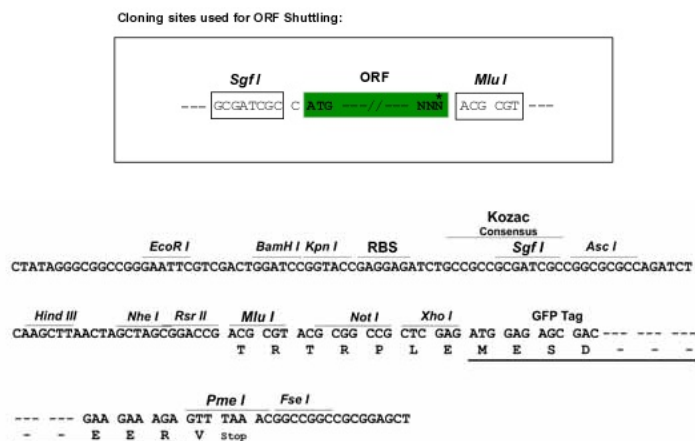
MELPDPVRQRLSNLSLTVFGDSSRTGPESDDAADNEMVSSLALQMSLYFNYSYFFPLWWVSCIVMLHLKYS  
 ILPDYYKFIVVTVVILITLIEAIRLYLGCMMNLQEKVPELAGFWLLSLLLQLPLILFLLNDGLRNLPLE  
 KAIHIIIFTIFLTFQVISAFLLKMMVNQLAARFHLQDFDQLSSSSAAVRRVRQCTEEL

**TRTRPLE** - GFP Tag - V

**Restriction Sites:** Sgfl-MluI



[View online »](#)

**Cloning Scheme:**


**ACCN:** NM\_153596

**ORF Size:** 594 bp

**OTI Disclaimer:** The molecular sequence of this clone aligns with the gene accession number as a point of reference only. However, individual transcript sequences of the same gene can differ through naturally occurring variations (e.g. polymorphisms), each with its own valid existence. This clone is substantially in agreement with the reference, but a complete review of all prevailing variants is recommended prior to use. [More info](#)

**OTI Annotation:** This clone was engineered to express the complete ORF with an expression tag. Expression varies depending on the nature of the gene.

**Components:** The ORF clone is ion-exchange column purified and shipped in a 2D barcoded Matrix tube containing 10ug of transfection-ready, dried plasmid DNA (reconstitute with 100 ul of water).

**Reconstitution Method:**

1. Centrifuge at 5,000xg for 5min.
2. Carefully open the tube and add 100ul of sterile water to dissolve the DNA.
3. Close the tube and incubate for 10 minutes at room temperature.
4. Briefly vortex the tube and then do a quick spin (less than 5000xg) to concentrate the liquid at the bottom.
5. Store the suspended plasmid at -20°C. The DNA is stable for at least one year from date of shipping when stored at -20°C.

**RefSeq:** [NM\\_153596.3](#)

**RefSeq Size:** 1386 bp

**RefSeq ORF:** 597 bp

**Locus ID:** 103765

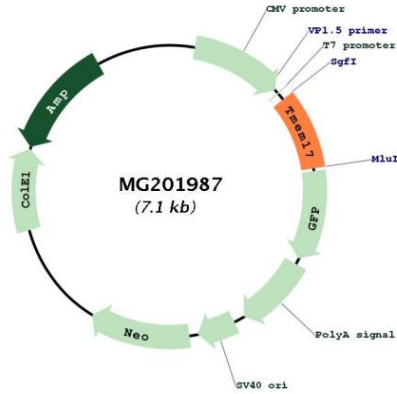
**UniProt ID:** [Q8K0U3](#)

**Cytogenetics:** 11 A3.2

**Gene Summary:**

Transmembrane component of the tectonic-like complex, a complex localized at the transition zone of primary cilia and acting as a barrier that prevents diffusion of transmembrane proteins between the cilia and plasma membranes. Required for ciliogenesis and sonic hedgehog/SHH signaling.[UniProtKB/Swiss-Prot Function]

**Product images:**



Circular map for MG201987