

Product datasheet for **MG201933**

Tcf15 (NM_009328) Mouse Tagged ORF Clone

Product data:

Product Type: Expression Plasmids
Tag: TurboGFP
Symbol: Tcf15
Synonyms: bHLH-EC2; Mesol
Mammalian Cell Selection: Neomycin
Vector: pCMV6-AC-GFP (PS100010)
E. coli Selection: Ampicillin (100 ug/mL)

ORF Nucleotide Sequence: >MG201933 representing NM_009328
Red=Cloning site Blue=ORF Green=Tags(s)

TTTTGTAATACGACTCACTATAGGGCGCCGGGAATTCGTCGACTGGATCCGGTACCGAGGAGATCTGCC
GCC**GCGATCGCC**

ATGGCGTTCGCGCTGCTGCGCCCGGTCCGGCGCGCACGTGCTGTACCCGGACGTGAGGCTGCTGAGCGAGG
ACGAGGAGAACCGCAGCGAGAGCGACGCGTCCGGACCAGTCTCGGCTGCTGCCAAGGGCTGGAGCGCGC
ACGGCTGGCCCGGGTCCCGGAGCGGGCGGGCGGAGCAACGGCGCGGGCCCGTGGTGGTGGTGGC
CAGCGACAGCGGCCAACCGCGCGGAGCGAGACCGCACGACGAGCGTGAACACGGCCCTCACCGCCCTGC
GCACGCTCATCCCAACCGAGCCCGTGGACCGAAAAGCTGTCTAAGATCGAGACGCTGCGTCTGGCGTCCAG
CTACATCGCCACCTGGCCAACGTGCTGCTGCTGGGCGACGCGCCGACGACGGGCAGCCGTGTTCCCGC
GCGGCGGGCGGTGGCAAGAGCGCGTCCCCGCCCGACGGCCGTACGCCGCGCTCCATCTGCACCTTCT
GTCTCAGCAACCAGCGCAAGGGGGCAGCCGTCGTGACCTGGGGGCAGCTGCTGAAAGTGAGGGGTG
AGCCCCGCTCCGAGGGCCTCGGCGA

AG**CGGACCG**ACGCGTACGCGGCCGCTCGAG - GFP Tag - GTTTAA

Protein Sequence: >MG201933 representing NM_009328
Red=Cloning site Green=Tags(s)

MAFALLRPVGAHVLYPDVRLSEDEENRSESDASDQSFGCCEGLEAARRGPGSGRRASNGAGPVVVVR
QRQAANARERDRQSVNTAFTALRTLIPTEPVDRKLSKIETLRLASSYIAHLANVLLLGAADDGQPCFR
AAGGGKSAVPAADGRQPRSICTFCLSNQRKGSRRDLGGSCLKVRGVAPLRGPRR

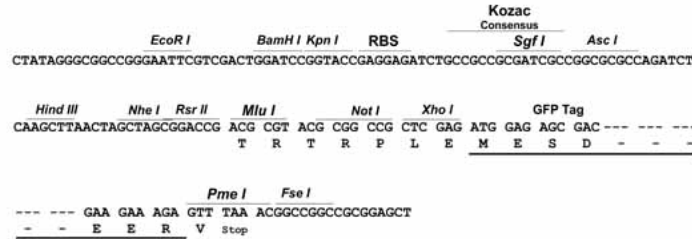
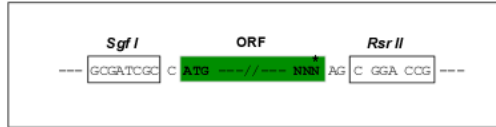
SGPTRRRLE - GFP Tag - V

Restriction Sites: SgfI-RsrII



Cloning Scheme:

Cloning sites used for ORF Shuttling:



ACCN: NM_009328

ORF Size: 585 bp

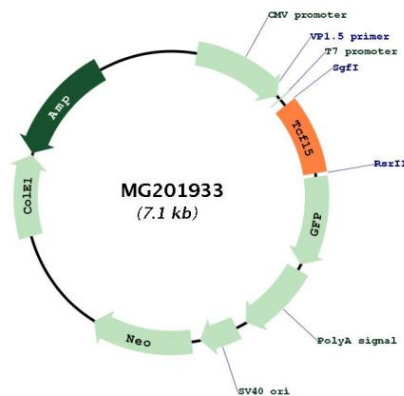
OTI Disclaimer: Due to the inherent nature of this plasmid, standard methods to replicate additional amounts of DNA in E. coli are highly likely to result in mutations and/or rearrangements. Therefore, OriGene does not guarantee the capability to replicate this plasmid DNA. Additional amounts of DNA can be purchased from OriGene with batch-specific, full-sequence verification at a reduced cost. Please contact our customer care team at custsupport@origene.com or by calling 301.340.3188 option 3 for pricing and delivery.

The molecular sequence of this clone aligns with the gene accession number as a point of reference only. However, individual transcript sequences of the same gene can differ through naturally occurring variations (e.g. polymorphisms), each with its own valid existence. This clone is substantially in agreement with the reference, but a complete review of all prevailing variants is recommended prior to use. [More info](#)

OTI Annotation: This clone was engineered to express the complete ORF with an expression tag. Expression varies depending on the nature of the gene.

Components: The ORF clone is ion-exchange column purified and shipped in a 2D barcoded Matrix tube containing 10ug of transfection-ready, dried plasmid DNA (reconstitute with 100 ul of water).

Reconstitution Method:	<ol style="list-style-type: none">1. Centrifuge at 5,000xg for 5min.2. Carefully open the tube and add 100ul of sterile water to dissolve the DNA.3. Close the tube and incubate for 10 minutes at room temperature.4. Briefly vortex the tube and then do a quick spin (less than 5000xg) to concentrate the liquid at the bottom.5. Store the suspended plasmid at -20°C. The DNA is stable for at least one year from date of shipping when stored at -20°C.
Note:	Plasmids are not sterile. For experiments where strict sterility is required, filtration with 0.22um filter is required.
RefSeq:	NM_009328.2 , NP_033354.2
RefSeq Size:	949 bp
RefSeq ORF:	588 bp
Locus ID:	21407
UniProt ID:	Q60756
Cytogenetics:	2 74.83 cM
Gene Summary:	May function as an early transcriptional regulator, involved in the patterning of the mesoderm and in lineage determination of cell types derived from the mesoderm.[UniProtKB/Swiss-Prot Function]

Product images:

Circular map for MG201933