

## Product datasheet for **MG201914**

### Borcs5 (NM\_026371) Mouse Tagged ORF Clone

#### Product data:

**Product Type:** Expression Plasmids  
**Product Name:** Borcs5 (NM\_026371) Mouse Tagged ORF Clone  
**Tag:** TurboGFP  
**Symbol:** Borcs5  
**Synonyms:** 5830457J20Rik; AW124643; Loh12cr1  
**Mammalian Cell Selection:** Neomycin  
**Vector:** pCMV6-AC-GFP (PS100010)  
**E. coli Selection:** Ampicillin (100 ug/mL)  
**ORF Nucleotide Sequence:** >MG201914 representing NM\_026371  
Red=Cloning site Blue=ORF Green=Tags(s)

TTTTGTAATACGACTCACTATAGGGCGGCCGGAATTCGTCGACTGGATCCGGTACCGAGGAGATCTGCC  
GCC**CGGATCGCC**

ATGGGCAGCGAGCAGAGCGGGAGGCCGAGAGCCGCCCGGCGATCTGAACGCCTCAGTACTCCATCTC  
CGGCTAAACATCGGGCAAGATGGACGATATCGTGGTGGTAGCTCAGGGCTCTCAGGCCTCACGGAATGT  
CAGCAATGACCCCGATGTCATCAAGCTACAAGAGATTCCAACCTCCAGCCCTTTTAAAAGGGCTCTTG  
AGTGGACAGACTTCCCAACCAATGCCAACTGGAGAAGCTAGACTCTCAGCAGGTGCTGCAGCTCTGCC  
TCCGGTACCAGGATCACCTGCACCAAGTGGCAGAGGCAGTGGCTTTCGATCAGAATGCTCTAGTCAAGCG  
AATCAAAGAGATGGATCTGTCCGTGGAACCCCTCTTTTGTTTCATGCAGGAGCGCCAGAAAAGATACGCC  
AAGTATGCAGAGCAGATCCAGAAGTGAATGAGATGTCGGCCATCCTGCGCCGCATCCAGATGGGCATAG  
ACCAGACGGTGCCACTGATGGAGCGGCTGAACAGCATGCTGCCAGAGGCTGAGCGCCTGGAGCCCTTCAG  
CATGAAGCCTGAGCGGGAGCGGCAC

**ACGCGT**ACGCGGCCGCTCGAG - GFP Tag - GTTTAA

**Protein Sequence:** >MG201914 representing NM\_026371  
Red=Cloning site Green=Tags(s)

MGSEQSAEASRPGLNASVTPSPAKHRAKMDDIVVVAQGSQASRNVSNPDVIKLEIPTFQPLLKGLL  
SGQTSPTNAKLEKLDSQQVLQLCLRYQDHLHQCAEAVAFDQNALVKRIKEMDL SVETLFCFMQERQKRYA  
KYAEQIQVNEMSAILRRIQMGIDQTVPLMERLNSMLPEAERLEPFSMKPERERH

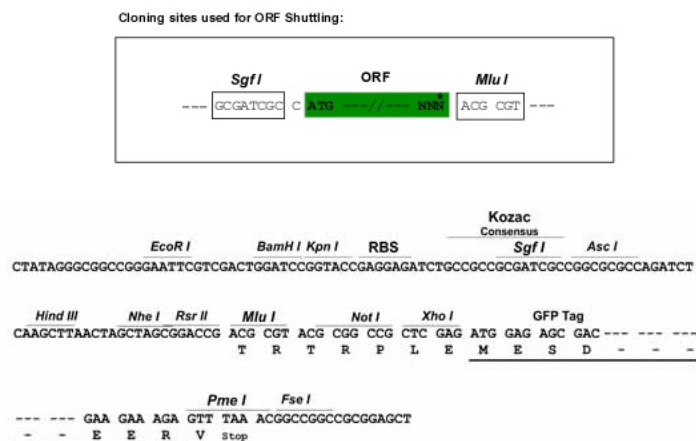
**TRTRPLE** - GFP Tag - V

**Restriction Sites:** SgfI-MluI

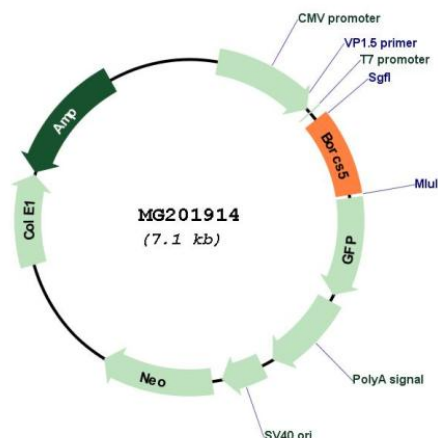


[View online »](#)

## Cloning Scheme:



## Plasmid Map:



ACCN: NM\_026371

ORF Size: 585 bp

OTI Disclaimer: The molecular sequence of this clone aligns with the gene accession number as a point of reference only. However, individual transcript sequences of the same gene can differ through naturally occurring variations (e.g. polymorphisms), each with its own valid existence. This clone is substantially in agreement with the reference, but a complete review of all prevailing variants is recommended prior to use. [More info](#)

OTI Annotation: This clone was engineered to express the complete ORF with an expression tag. Expression varies depending on the nature of the gene.

Components: The ORF clone is ion-exchange column purified and shipped in a 2D barcoded Matrix tube containing 10ug of transfection-ready, dried plasmid DNA (reconstitute with 100 ul of water).

**Reconstitution Method:**

1. Centrifuge at 5,000xg for 5min.
2. Carefully open the tube and add 100ul of sterile water to dissolve the DNA.
3. Close the tube and incubate for 10 minutes at room temperature.
4. Briefly vortex the tube and then do a quick spin (less than 5000xg) to concentrate the liquid at the bottom.
5. Store the suspended plasmid at -20°C. The DNA is stable for at least one year from date of shipping when stored at -20°C.

**RefSeq:** [NM\\_026371.3](#)

**RefSeq Size:** 1706 bp

**RefSeq ORF:** 588 bp

**Locus ID:** 67774

**UniProt ID:** [Q9D920](#)

**Cytogenetics:** 6 G1

**Gene Summary:** As part of the BORC complex may play a role in lysosomes movement and localization at the cell periphery. Associated with the cytosolic face of lysosomes, the BORC complex may recruit ARL8B and couple lysosomes to microtubule plus-end-directed kinesin motor. Thereby, it may indirectly play a role in cell spreading and motility.[UniProtKB/Swiss-Prot Function]