

Product datasheet for **MG201910**

Pgrmc1 (BC006016) Mouse Tagged ORF Clone

Product data:

Product Type: Expression Plasmids
Product Name: Pgrmc1 (BC006016) Mouse Tagged ORF Clone
Tag: TurboGFP
Symbol: Pgrmc1
Synonyms: HPR6.6, PPMR, Vema
Mammalian Cell Selection: Neomycin
Vector: pCMV6-AC-GFP (PS100010)
E. coli Selection: Ampicillin (100 ug/mL)
ORF Nucleotide Sequence: >MG201910 representing BC006016
 Red=Cloning site Blue=ORF Green=Tags(s)

TTTTGTAATACGACTCACTATAGGGCGCCGGGAATTCGTCGACTGGATCCGGTACCGAGGAGATCTGCC
 GCC**CGATCGCC**

ATGGCTGCCGAGGATGTGGTGGCGACTGGCGCCGACCCGAGCGAGCTAGAGGGCGCGGACTGCTGCACG
 AGATTTTCACGTCTCTCTCAACCTGCTCTCTGGCCCTCTGCATCTTCTGCTCTACAAGATCGTTTCG
 CGGGGACCAGCCCGGTGCCAGTGGCGACAACGACGACGACGAACCACCCCGCTGCCCGCTCAAGCGG
 CGCGACTTCAACCCTGCCGAGCTGAGGCGTTTCGATGGCGTCCAGGACCCGCGCATTCTCATGGCCATCA
 ACGGCAAGGTGTTTCGACGTGACCAAAGGCCGAAGTTCTACGGGCCTGAGGGCCATATGGGGTCTTTGC
 CGGAAGAGATGCATCCAGGGCCTTGCCACATTTTGCCTGGACAAAGAAGCACTGAAGGATGAGTATGAT
 GACCTTTCTGACCTCACCCCTGCACAGCAGGAGACCCTGAGTGACTGGGACTCTCAGTTCACTTTCAAGT
 ATCATCACGTGGGAAAAGTCTGAAGGAAGGGGAGGAGCCTACTGTGTACTCAGATGATGAAGAACCAAA
 AGACGAGACAGCTCGGAAGAATGAA

ACGCGTACGCGGCCGCTCGAG - GFP Tag - GTTTAA

Protein Sequence: >MG201910 representing BC006016
 Red=Cloning site Green=Tags(s)

MAEDVVATGADPSELEGGLLHEIFTSPLNLLLLGLCIFLLYKIVRGDQPGASGDNDDEPPPLPRLKR
 RDFTPAELRRFDGVQDPRILMAINGKVFVTKGRKFGYPEGPYGVFAGRDASRGLATFCLDKEALKDEYD
 DLSDLTPAQQETLSDWDSQFTFKYHHVGKLLKEGEEPTVYSDDEEPKDEARKNE

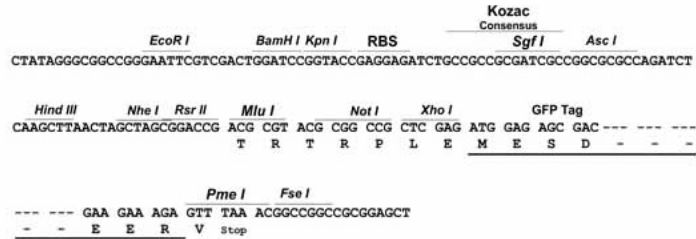
TRTRPLE - GFP Tag - V

Restriction Sites: Sgfl-MluI

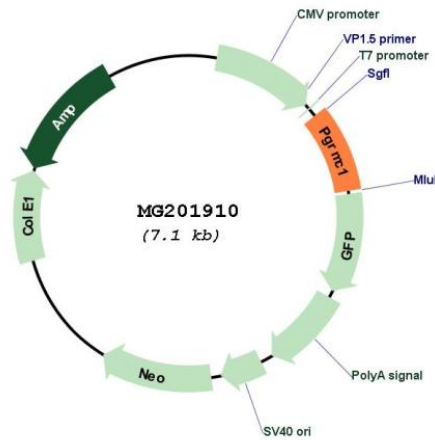


Cloning Scheme:

Cloning sites used for ORF Shutting:



Plasmid Map:



ACCN: BC006016
 ORF Size: 587 bp

OTI Disclaimer:	<p>Due to the inherent nature of this plasmid, standard methods to replicate additional amounts of DNA in E. coli are highly likely to result in mutations and/or rearrangements. Therefore, OriGene does not guarantee the capability to replicate this plasmid DNA. Additional amounts of DNA can be purchased from OriGene with batch-specific, full-sequence verification at a reduced cost. Please contact our customer care team at custsupport@origene.com or by calling 301.340.3188 option 3 for pricing and delivery.</p> <p>The molecular sequence of this clone aligns with the gene accession number as a point of reference only. However, individual transcript sequences of the same gene can differ through naturally occurring variations (e.g. polymorphisms), each with its own valid existence. This clone is substantially in agreement with the reference, but a complete review of all prevailing variants is recommended prior to use. More info</p>
OTI Annotation:	This clone was engineered to express the complete ORF with an expression tag. Expression varies depending on the nature of the gene.
Components:	The ORF clone is ion-exchange column purified and shipped in a 2D barcoded Matrix tube containing 10ug of transfection-ready, dried plasmid DNA (reconstitute with 100 ul of water).
Reconstitution Method:	<ol style="list-style-type: none"> 1. Centrifuge at 5,000xg for 5min. 2. Carefully open the tube and add 100ul of sterile water to dissolve the DNA. 3. Close the tube and incubate for 10 minutes at room temperature. 4. Briefly vortex the tube and then do a quick spin (less than 5000xg) to concentrate the liquid at the bottom. 5. Store the suspended plasmid at -20°C. The DNA is stable for at least one year from date of shipping when stored at -20°C.
RefSeq:	BC006016 , AAH06016
RefSeq Size:	1968 bp
RefSeq ORF:	587 bp
Locus ID:	53328
Cytogenetics:	X A3.3
Gene Summary:	Component of a progesterone-binding protein complex. Binds progesterone. Has many reported cellular functions (heme homeostasis, interaction with CYPs).[UniProtKB/Swiss-Prot Function]