

Product datasheet for **MG201870**

Rhoa (BC068115) Mouse Tagged ORF Clone

Product data:

Product Type: Expression Plasmids
Product Name: Rhoa (BC068115) Mouse Tagged ORF Clone
Tag: TurboGFP
Symbol: Rhoa
Synonyms: Arha; Arha1; Arha2
Mammalian Cell Selection: Neomycin
Vector: pCMV6-AC-GFP (PS100010)
E. coli Selection: Ampicillin (100 ug/mL)
ORF Nucleotide Sequence: >MG201870 representing BC068115
 Red=Cloning site Blue=ORF Green=Tags(s)

TTTTGTAATACGACTCACTATAGGGCGGCCGGAATTCGTCGACTGGATCCGGTACCGAGGAGATCTGCC
 GCC**CGATCGCC**

ATGGCTGCCATCAGGAAGAACTGGTGATTGTTGGTGATGGAGCTTGTGGTAAGACATGCTTGCTCATAG
 TCTTCAGCAAGGACCAGTCCCAGAGGTCTATGTGCCACGGTGTGGAAAATATGTGGCGGATATCGA
 GGTGGATGGGAAGCAGGTAGAGTTGGCTTTATGGGACACAGCTGGACAGGAAGATTATGACCGCCTGCGG
 CCTCTCTTATCCAGACACCGATGTTATATTGATGTGTTTTCCATTGACAGCCCTGATAGTTTAGAAA
 ACATCCCAGAAAATGGACTCCAGAAGCAAGCATTTCTGTCCAATGTGCCATCATCCTGGTTGGGAA
 CAAGAAGGACCTTCGGAATGACGAGCACACGAGACGGGAGTTGGCCAAAATGAAGCAGGACCGGTA
 CCTGAAGAAGGCAGAGATATGGCAAACAGGATTGGCGCTTTGGGTACATGGAGTGTTCAGCAAAGACCA
 AAGATGGAGTGAGAGAGGTTTTGAGATGGCCACGAGAGCTGCTCTGCAAGCTAGACGTGGGAAGAAAA
 GTCTGGGTGCCTCATCTTG

ACGCGTACGCGGCCGCTCGAG - GFP Tag - GTTTAA

Protein Sequence: >MG201870 representing BC068115
 Red=Cloning site Green=Tags(s)

MAAIRKKLVIVGDGACGKTCLLIVFSKDQFPEVYVPTVFENYVADIEVDGKQVELALWDTAGQEDYDRLR
 PLSYPD TDVILMCF SIDSPD SLENIPEKWTPEVKHFCPNVPIILVGNKKDLRND EHTRRELAKMKQEPVK
 PEEGRDMANRIGAFGYMECSAKTKDGVREVFEMATRAALQARRGKKKSGCLIL

TRTRPLE - GFP Tag - V

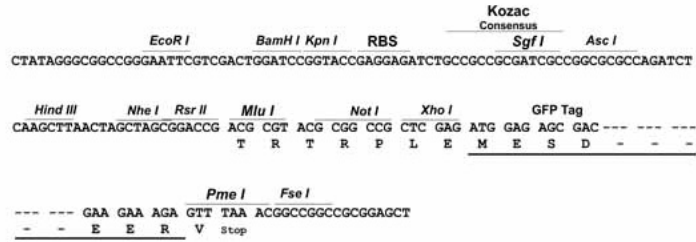
Restriction Sites: Sgfl-MluI



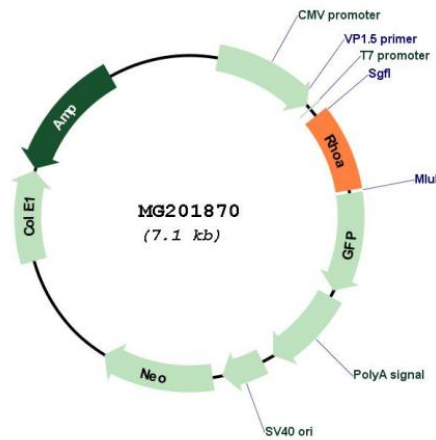
[View online »](#)

Cloning Scheme:

Cloning sites used for ORF Shutting:



Plasmid Map:



ACCN: BC068115
 ORF Size: 579 bp

OTI Disclaimer:	<p>Due to the inherent nature of this plasmid, standard methods to replicate additional amounts of DNA in E. coli are highly likely to result in mutations and/or rearrangements. Therefore, OriGene does not guarantee the capability to replicate this plasmid DNA. Additional amounts of DNA can be purchased from OriGene with batch-specific, full-sequence verification at a reduced cost. Please contact our customer care team at custsupport@origene.com or by calling 301.340.3188 option 3 for pricing and delivery.</p> <p>The molecular sequence of this clone aligns with the gene accession number as a point of reference only. However, individual transcript sequences of the same gene can differ through naturally occurring variations (e.g. polymorphisms), each with its own valid existence. This clone is substantially in agreement with the reference, but a complete review of all prevailing variants is recommended prior to use. More info</p>
OTI Annotation:	This clone was engineered to express the complete ORF with an expression tag. Expression varies depending on the nature of the gene.
Components:	The ORF clone is ion-exchange column purified and shipped in a 2D barcoded Matrix tube containing 10ug of transfection-ready, dried plasmid DNA (reconstitute with 100 ul of water).
Reconstitution Method:	<ol style="list-style-type: none"> 1. Centrifuge at 5,000xg for 5min. 2. Carefully open the tube and add 100ul of sterile water to dissolve the DNA. 3. Close the tube and incubate for 10 minutes at room temperature. 4. Briefly vortex the tube and then do a quick spin (less than 5000xg) to concentrate the liquid at the bottom. 5. Store the suspended plasmid at -20°C. The DNA is stable for at least one year from date of shipping when stored at -20°C.
RefSeq:	BC068115 , AAH68115
RefSeq Size:	2166 bp
RefSeq ORF:	581 bp
Locus ID:	11848
Cytogenetics:	9 F2
Gene Summary:	This gene encodes a member of the Rho family of small GTPases, which cycle between inactive GDP-bound and active GTP-bound states and function as molecular switches in signal transduction cascades. Rho proteins promote reorganization of the actin cytoskeleton and regulate cell shape, attachment, and motility. Overexpression of this gene is associated with tumor cell proliferation and metastasis. Multiple alternatively spliced variants have been identified. [provided by RefSeq, Sep 2015]