

## Product datasheet for **MG201813**

### Mterfd2 (BC055877) Mouse Tagged ORF Clone

#### Product data:

**Product Type:** Expression Plasmids  
**Product Name:** Mterfd2 (BC055877) Mouse Tagged ORF Clone  
**Tag:** TurboGFP  
**Symbol:** Mterfd2  
**Synonyms:** 1810059A23Rik; 4933412H03Rik; Mterfd2  
**Mammalian Cell Selection:** Neomycin  
**Vector:** pCMV6-AC-GFP (PS100010)  
**E. coli Selection:** Ampicillin (100 ug/mL)  
**ORF Nucleotide Sequence:** >MG201813 representing BC055877  
 Red=Cloning site Blue=ORF Green=Tags(s)

TTTTGTAATACGACTCACTATAGGGCGCCGGGAATTCGTCGACTGGATCCGGTACCGAGGAGATCTGCC  
 GCC**CGATCGCC**

ATGCAGATGAAGAGGCGTTCAGTTACCTTCGGAAGCTTGGCCTTGAGAGAAGGGAACTGAAGCGGGTGC  
 TGTCCGTTTGCCTGAGTTCACCATGCATCAGCGGGACATTGACCGAGTTGTGAAGTCCCTCAGGGA  
 GAAGTGTGTTACGGCACAGCACATCACAGCGTTCGCACAGATGCCCCACTGTTTTGCAGGAGGAC  
 CCCAACGAGCTAGAATACAAATCCAGTATGCATATTTCCAGGATGGACTCACACATCTAGACATAGTCA  
 GGACGAATTTCTACAGTATTCAATAACCAAGATCAAGCAGAGACACATTTACCTGGAGCGCCTTGACG  
 GTACCAGACCCCTGATAAGAAGGGGACAGACAGATCCCTAATCCCTCACTGAGGAACATTCTCAGAGTT  
 TCTGAAGCTGAGTTTTTGCCAGGACAGCCTGTTCTCTGTCGAGGAGTTTCAAGTTTTTAAAAACTCT  
 TGGATCAAGAGGAGGAGGAGGAGTCTGAGAGCCATGCATCTGAGGAGGAAGAGGAAGAGGAGGAAGGA  
 GGAGCTACTG

**ACGCGTACGCGGCCGCTCGAG** - GFP Tag - GTTTAA

**Protein Sequence:** >MG201813 representing BC055877  
 Red=Cloning site Green=Tags(s)

MQMKRRSSYLRLGLGEGKLRVLSVCPEVFTMHQRDIDRVVKVLRKCLFTAQHITDVLHRCPTVLQED  
 PNELEYKFQYAYFRMGLTHLDIVRTNFLQYSITKIKQRHIYLERLGRYQTPDKKGQTQIPNPSLRNLRV  
 SEAEFLARTACSSVEEFQVFKLLDQEEEESESHASEEEEEEEEEELL

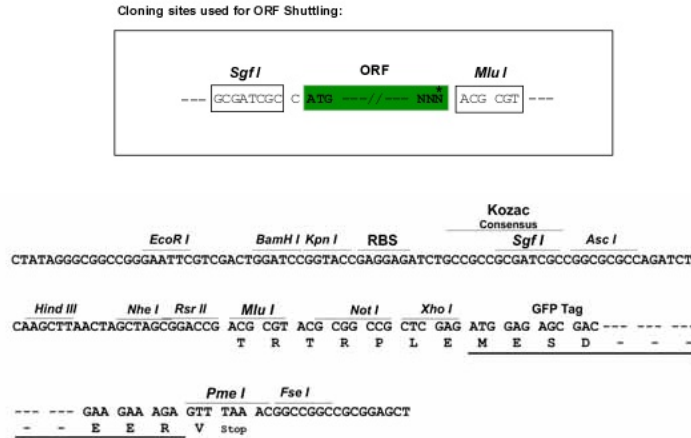
**TRTRPLE** - GFP Tag - V

**Restriction Sites:** Sgfl-MluI

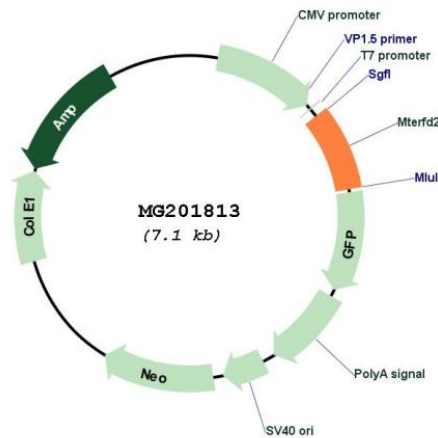


[View online »](#)

Cloning Scheme:



Plasmid Map:



ACCN: BC055877

ORF Size: 572 bp

OTI Disclaimer: The molecular sequence of this clone aligns with the gene accession number as a point of reference only. However, individual transcript sequences of the same gene can differ through naturally occurring variations (e.g. polymorphisms), each with its own valid existence. This clone is substantially in agreement with the reference, but a complete review of all prevailing variants is recommended prior to use. [More info](#)

OTI Annotation: This clone was engineered to express the complete ORF with an expression tag. Expression varies depending on the nature of the gene.

Components: The ORF clone is ion-exchange column purified and shipped in a 2D barcoded Matrix tube containing 10ug of transfection-ready, dried plasmid DNA (reconstitute with 100 ul of water).

**Reconstitution Method:**

1. Centrifuge at 5,000xg for 5min.
2. Carefully open the tube and add 100ul of sterile water to dissolve the DNA.
3. Close the tube and incubate for 10 minutes at room temperature.
4. Briefly vortex the tube and then do a quick spin (less than 5000xg) to concentrate the liquid at the bottom.
5. Store the suspended plasmid at -20°C. The DNA is stable for at least one year from date of shipping when stored at -20°C.

**RefSeq:** [BC055877](#), [AAH55877](#)

**RefSeq Size:** 1255 bp

**RefSeq ORF:** 572 bp

**Locus ID:** 69821

**Cytogenetics:** 1 D

**Gene Summary:** Regulator of mitochondrial ribosome biogenesis and translation. Binds to mitochondrial ribosomal RNAs 16S, 12S and 7S (By similarity). Targets NSUN4 RNA methyltransferase to the mitochondrial large ribosomal subunit.[UniProtKB/Swiss-Prot Function]