

## Product datasheet for **MG201762**

### Myct1 (NM\_026793) Mouse Tagged ORF Clone

#### Product data:

**Product Type:** Expression Plasmids  
**Product Name:** Myct1 (NM\_026793) Mouse Tagged ORF Clone  
**Tag:** TurboGFP  
**Symbol:** Myct1  
**Synonyms:** 1110020B04Rik; AI225941; AI642973; Mtmc1  
**Mammalian Cell Selection:** Neomycin  
**Vector:** pCMV6-AC-GFP (PS100010)  
**E. coli Selection:** Ampicillin (100 ug/mL)  
**ORF Nucleotide Sequence:** >MG201762 representing NM\_026793  
 Red=Cloning site Blue=ORF Green=Tags(s)

TTTTGTAATACGACTCACTATAGGGCGGCCGGAATTCGTCGACTGGATCCGGTACCGAGGAGATCTGCC  
 GCC**CGATCGCC**

ATGGCTAATAACACCACGAGCTTAGGGAGTCCTTGCCAGAAAACCTTTGGGAGGACCTATAATGTCTCT  
 TCACCGTATCCGTGGCGATTGGCTTGCATCGGAGGATTTCTCTGGGCGCTGTTCTGTTTTCTGTCTCG  
 AAGAAGAAGAGCCAGTGCACCCATTTCCGAGTGGAGTCCCACCAGGAGACCCAGGTCTTCTACAACCAC  
 GGCTCAACAGGACTGGTTCTACGCCACAGTGGCTATGAACGGCGAAGCAACCTCAGCCTGGCCAGCC  
 TCACTTTCCAGAGACAAGCTTCCATGGAGCTGGTCAACTCCTTCCAAGGAAATCAAGCTTAGGGCTTC  
 GACTTTCCATCCCTTCTGCAATGCCACCACTCCGGTGGAAACGGAGAGTCAGCTGATGACCCTGTCT  
 GCCTCCACCACCCCTTCCACCCTCAGCACCCGACACAGCCCGAGCCGGCCAGACTCCGCTGGTCCAGCA  
 ACAGCTTGGCGATGGGCCTTCCACACCCGCCCCACCTGCCTATGAATCCATCATAAAGGCATTTCCCGA  
 TTCC

**ACGCGTACGCGGCCGCTCGAG** - GFP Tag - GTTTAA

**Protein Sequence:** >MG201762 representing NM\_026793  
 Red=Cloning site Green=Tags(s)

MANNTTSLGSPWPENFWEDLIMSFTVSVAIGLAIGGFLWALFVFLSRRRRASAPISQWSPTRRRSSYNH  
 GLNRTGFYRHSGYERRSNLSLASLTFQRQASMELVNSFPRKSSFRASFTFHPFLQCPPLPVETESQLMTLS  
 ASTTPSTLSTAHSRPFDFRWSNSLRMGLSTPPPPAYESIKAFFPDS

**TRTRPLE** - GFP Tag - V

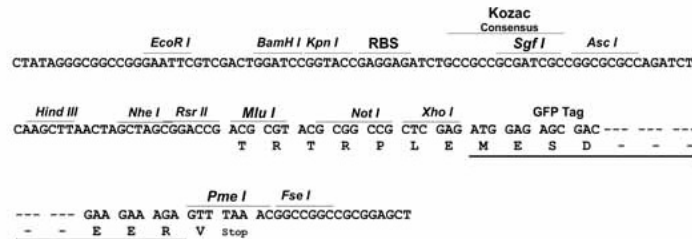
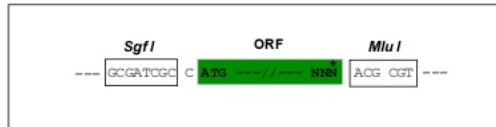
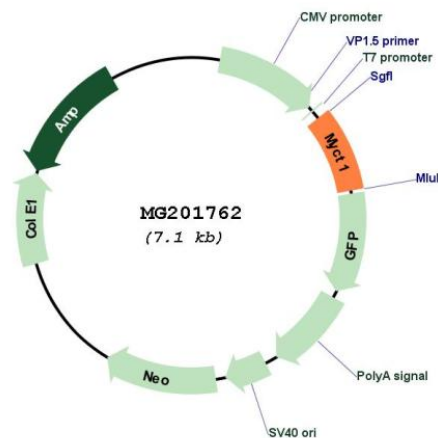
**Restriction Sites:** Sgfl-MluI



[View online »](#)

**Cloning Scheme:**

Cloning sites used for ORF Shutting:


**Plasmid Map:**

**ACCN:** NM\_026793

**ORF Size:** 564 bp

**OTI Disclaimer:** The molecular sequence of this clone aligns with the gene accession number as a point of reference only. However, individual transcript sequences of the same gene can differ through naturally occurring variations (e.g. polymorphisms), each with its own valid existence. This clone is substantially in agreement with the reference, but a complete review of all prevailing variants is recommended prior to use. [More info](#)
**OTI Annotation:** This clone was engineered to express the complete ORF with an expression tag. Expression varies depending on the nature of the gene.

**Components:** The ORF clone is ion-exchange column purified and shipped in a 2D barcoded Matrix tube containing 10ug of transfection-ready, dried plasmid DNA (reconstitute with 100 ul of water).

**Reconstitution Method:**

1. Centrifuge at 5,000xg for 5min.
2. Carefully open the tube and add 100ul of sterile water to dissolve the DNA.
3. Close the tube and incubate for 10 minutes at room temperature.
4. Briefly vortex the tube and then do a quick spin (less than 5000xg) to concentrate the liquid at the bottom.
5. Store the suspended plasmid at -20°C. The DNA is stable for at least one year from date of shipping when stored at -20°C.

**RefSeq:** [NM\\_026793.2](#), [NP\\_081069.1](#)

**RefSeq Size:** 2792 bp

**RefSeq ORF:** 567 bp

**Locus ID:** 68632

**UniProt ID:** [Q8R411](#)

**Cytogenetics:** 10 A1

**Gene Summary:** May regulate certain MYC target genes, MYC seems to be a direct upstream transcriptional activator. Does not seem to significantly affect growth cell capacity. Overexpression seems to mediate many of the known phenotypic features associated with MYC, including promotion of apoptosis, alteration of morphology, enhancement of anchorage-independent growth, tumorigenic conversion, promotion of genomic instability and inhibition of hematopoietic differentiation.[UniProtKB/Swiss-Prot Function]