

Product datasheet for **MG201744**

Gpx7 (NM_024198) Mouse Tagged ORF Clone

Product data:

Product Type: Expression Plasmids
Product Name: Gpx7 (NM_024198) Mouse Tagged ORF Clone
Tag: TurboGFP
Symbol: Gpx7
Synonyms: 3110050F08Rik; AI327032; GPX6
Mammalian Cell Selection: Neomycin
Vector: pCMV6-AC-GFP (PS100010)
E. coli Selection: Ampicillin (100 ug/mL)
ORF Nucleotide Sequence: >MG201744 representing NM_024198
 Red=Cloning site Blue=ORF Green=Tags(s)

TTTTGTAATACGACTCACTATAGGGCGGCCGGAATTCGTCGACTGGATCCGGTACCGAGGAGATCTGCC
 GCC**CGATCGCC**

ATGGTTGCAGCTGTGGCGACGGCGTGGCTGCTCCTGTGGGCCGCGCCTGCGCGCAATCCGAGCAGGACT
 TCTACGACTTCAAGGCGGTCAACATCCGGGCAAGCTGGTGTGCTGGAGAAGTACCGTGGCTCGGTTTC
 CCTGGTGGTGAACGTAGCTAGCGAATGTGGCTTACAGACCAGAAGTACCGAGCCTTGCAGCAGCTGCAG
 CGGGACCTGGGCCCCATCATTTAATGTGCTTCCCTTCCAACAGTTTGGCCAACGGAACCGAG
 ACACCAACAGGGAGATTGAGAAGTTGCCCGCCGACCTACAGTGTCTCTTTCCCATGTTTAGCAAGAT
 CGCAGTCACTGGCACTGGTGCCACCCCTGCCTTCAAGTACCTAACCAGACTTCTGGGAAGGAGCCACC
 TGGAACTTCTGGAAGTACCTAGTGGACCCAGACGAAAGGTGGTGGGAGCATGGGACCCACTGTGCCAG
 TGGCGGAGATCAAGCCCGTATTACAGAGCAGGTGATGAAACTCATCCTTCGAAACGAGAAGACTTG

ACGCGTACGCGGCCGCTCGAG - GFP Tag - GTTTAA

Protein Sequence: >MG201744 representing NM_024198
 Red=Cloning site Green=Tags(s)

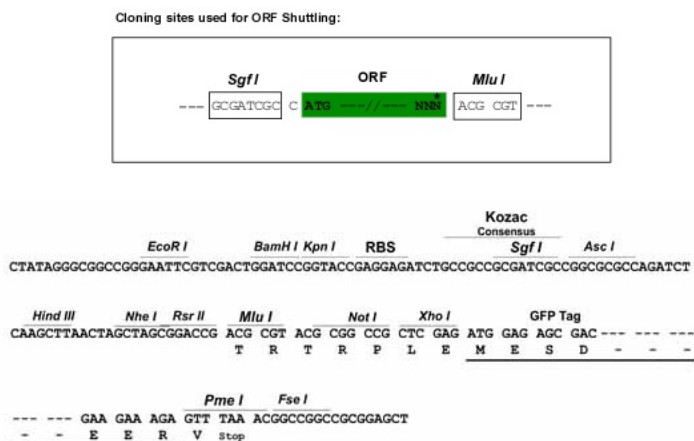
MVAAVATAWLLLWAAACAQSEQDFYDFKAVNIRGKLVSLSEKYRGSVSLVNVVASECGFTDQNYRALQQLQ
 RDLGPHHFNVLAFCNQFGQEPDNTREIENFARRTYSVSFPMFSKIAVTGTGAHPAFKYLQTSGKEPT
 WNFWKYLVDPDGKVVGAWDPTVPAEIKPRITEQVMKLI LRKREDL

TRTRPLE - GFP Tag - V

Restriction Sites: Sgfl-MluI



Cloning Scheme:



Plasmid Map:



ACCN: NM_024198

ORF Size: 558 bp

OTI Disclaimer: The molecular sequence of this clone aligns with the gene accession number as a point of reference only. However, individual transcript sequences of the same gene can differ through naturally occurring variations (e.g. polymorphisms), each with its own valid existence. This clone is substantially in agreement with the reference, but a complete review of all prevailing variants is recommended prior to use. [More info](#)

OTI Annotation: This clone was engineered to express the complete ORF with an expression tag. Expression varies depending on the nature of the gene.

Components:	The ORF clone is ion-exchange column purified and shipped in a 2D barcoded Matrix tube containing 10ug of transfection-ready, dried plasmid DNA (reconstitute with 100 ul of water).
Reconstitution Method:	<ol style="list-style-type: none">1. Centrifuge at 5,000xg for 5min.2. Carefully open the tube and add 100ul of sterile water to dissolve the DNA.3. Close the tube and incubate for 10 minutes at room temperature.4. Briefly vortex the tube and then do a quick spin (less than 5000xg) to concentrate the liquid at the bottom.5. Store the suspended plasmid at -20°C. The DNA is stable for at least one year from date of shipping when stored at -20°C.
RefSeq:	<u>NM_024198.3</u>
RefSeq Size:	1215 bp
RefSeq ORF:	561 bp
Locus ID:	67305
UniProt ID:	<u>Q99LJ6</u>
Cytogenetics:	4 C7
Gene Summary:	It protects esophageal epithelia from hydrogen peroxide-induced oxidative stress. It suppresses acidic bile acid-induced reactive oxygen species (ROS) and protects against oxidative DNA damage and double-strand breaks (By similarity).[UniProtKB/Swiss-Prot Function]