

## Product datasheet for **MG201720**

### Dusp3 (NM\_028207) Mouse Tagged ORF Clone

#### Product data:

**Product Type:** Expression Plasmids  
**Product Name:** Dusp3 (NM\_028207) Mouse Tagged ORF Clone  
**Tag:** TurboGFP  
**Symbol:** Dusp3  
**Synonyms:** 2210015O03Rik; 5031436O03Rik; T-DSP11; VHR  
**Mammalian Cell Selection:** Neomycin  
**Vector:** pCMV6-AC-GFP (PS100010)  
**E. coli Selection:** Ampicillin (100 ug/mL)  
**ORF Nucleotide Sequence:** >MG201720 representing NM\_028207  
 Red=Cloning site Blue=ORF Green=Tags(s)

TTTTGTAATACGACTCACTATAGGGCGGCCGGAATTCGTCGACTGGATCCGGTACCGAGGAGATCTGCC  
 GCC**CGATCGCC**

ATGTCCAGCTCGTTCGAACTCTCGGTGCAAGATCTCAACGACCTGCTCTCGGATGGCAGCGGCTGCTACA  
 GCCTGCCGAGCCAGCCCTGCAACGAGGTCGTCGCCGAGGGTCTACGTGGGCAACCGCTCTGTGGCTCAGGA  
 CATCACCCAGCTGCAGAACTGGGCATCACCCACGTCTGAATGCTGCCGAGGGCAGGTCCTTCATGCAC  
 GTCAACACCAGTGTAGCTTCTACGAGGATTCTGGCATCACCTACTTGGGCATCAAGCCAATGATACGC  
 AGGAGTTCAACCTCAGTGCTTACTTTGAAAGGGCCACAGATTTTCATTGACCAGGCGCTGGCCATAAAAA  
 TGGCCGGGTGCTTGTCCATTGCCGCGAGGGCTACAGCCGCTCCCAACGCTAGTTATCGCCTACCTCATG  
 ATGCGGCAGAAGATGGACGTCAAGTCTGCTCTGAGTACTGTGAGGCAGAATCGTGAGATCGGCCCAACG  
 ATGGCTTCTGGCCCAACTCTGCCAGCTCAATGACAGACTAGCCAAGGAGGGCAAGGTGAAACTC

AG**CGGACCG**ACGCGTACGCGGCCGCTCGAG - GFP Tag - GTTTAA

**Protein Sequence:** >MG201720 representing NM\_028207  
 Red=Cloning site Green=Tags(s)

MSSSFELSVQDLNDLLSDGSGCYSLPSQPCNEVPRVYVGNASVAQDITQLQKLGITHVLNAAEGRSFMH  
 VNTSASFYEDSGITYLGIKANDTQEFNL SAYFERATDFIDQALAHKNGRVLVHCREGYSRSPTLVIAIYLM  
 MRQKMDVKLSALSTVRQNREIGPNDGFLAQLCQLNDRLAKEGKVKL

**SGP**TRRRLE - GFP Tag - V

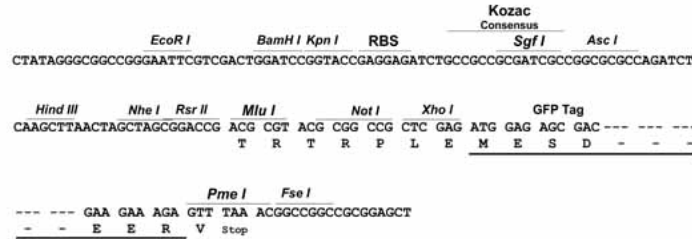
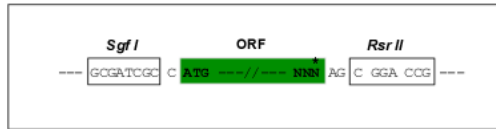
**Restriction Sites:** Sgfl-RsrII



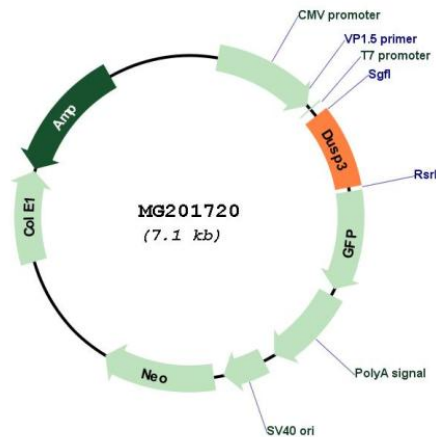
[View online »](#)

Cloning Scheme:

Cloning sites used for ORF Shuttling:



Plasmid Map:



ACCN: NM\_028207

ORF Size: 555 bp

OTI Disclaimer: The molecular sequence of this clone aligns with the gene accession number as a point of reference only. However, individual transcript sequences of the same gene can differ through naturally occurring variations (e.g. polymorphisms), each with its own valid existence. This clone is substantially in agreement with the reference, but a complete review of all prevailing variants is recommended prior to use. [More info](#)

OTI Annotation: This clone was engineered to express the complete ORF with an expression tag. Expression varies depending on the nature of the gene.

<b>Components:</b>	The ORF clone is ion-exchange column purified and shipped in a 2D barcoded Matrix tube containing 10ug of transfection-ready, dried plasmid DNA (reconstitute with 100 ul of water).
<b>Reconstitution Method:</b>	<ol style="list-style-type: none"><li>1. Centrifuge at 5,000xg for 5min.</li><li>2. Carefully open the tube and add 100ul of sterile water to dissolve the DNA.</li><li>3. Close the tube and incubate for 10 minutes at room temperature.</li><li>4. Briefly vortex the tube and then do a quick spin (less than 5000xg) to concentrate the liquid at the bottom.</li><li>5. Store the suspended plasmid at -20°C. The DNA is stable for at least one year from date of shipping when stored at -20°C.</li></ol>
<b>RefSeq:</b>	<u><a href="#">NM_028207.3</a></u> , <u><a href="#">NP_082483.1</a></u>
<b>RefSeq Size:</b>	4204 bp
<b>RefSeq ORF:</b>	558 bp
<b>Locus ID:</b>	72349
<b>UniProt ID:</b>	<u><a href="#">Q9D7X3</a></u>
<b>Cytogenetics:</b>	11 D
<b>Gene Summary:</b>	Shows activity both for tyrosine-protein phosphate and serine-protein phosphate, but displays a strong preference toward phosphotyrosines. Specifically dephosphorylates and inactivates ERK1 and ERK2 (By similarity).[UniProtKB/Swiss-Prot Function]