

## Product datasheet for **MG201539**

### Obp2a (NM\_153558) Mouse Tagged ORF Clone

#### Product data:

**Product Type:** Expression Plasmids  
**Product Name:** Obp2a (NM\_153558) Mouse Tagged ORF Clone  
**Tag:** TurboGFP  
**Symbol:** Obp2a  
**Synonyms:** BC027556; Lcn13  
**Mammalian Cell Selection:** Neomycin  
**Vector:** pCMV6-AC-GFP (PS100010)  
**E. coli Selection:** Ampicillin (100 ug/mL)  
**ORF Nucleotide Sequence:** >MG201539 representing NM\_153558  
 Red=Cloning site Blue=ORF Green=Tags(s)

TTTTGTAATACGACTCACTATAGGGCGCCGGAATTCGTCGACTGGATCCGGTACCGAGGAGATCTGCC  
 GCC**CGATCGCC**

ATGAAGAGCCTGCTCCTCACCATCTGCTGCTGGGGCTGGTGGCTGTCCTGAAGGCTCAGGAAGCCCCGC  
 CAGATGACCTGGTGGATTACTCTGGGATCTGGTACGCAAAGCCATGGTACACAATGGTACCCTACCCAG  
 TCACAAGATACCCAGTATAGTTTTCCCTGTGAGAATAATAGCTCTGGAAGAAGGAGACTTGGAGACCACA  
 GTTGTATTCTGGAACAATGGTCATTGCCGTGAGTTTAAATTCGTGATGAAGAAAACAGAAGAGCCTGGCA  
 AATACACCGCTTTTCATAACACGAAGGTTATTCATGTGGAAAAGACGTCGGTGAATGAGCACTACATTTT  
 CTACTGCGAAGGCCGGCACAATGGGACGTCGTCATTCGGGATGGGAAAGCTCATGGGGAGAGACTCTGGT  
 GAAAATCCAGAGGCCATGGAAGAATTTAAGAATTCATAAAGCGCATGAATCTCCGACTGAAAAACATGT  
 TTGTGCCAGAGATCGGAGATAAATGTGTTGAAAGTGAC

**ACGCGT**ACGCGGCCGCTCGAG - GFP Tag - GTTTAA

**Protein Sequence:** >MG201539 representing NM\_153558  
 Red=Cloning site Green=Tags(s)

MKSLLLTILLGLVAVLKAQEAPPDDLVDYSGIWIYAKAMVHNGTLPSHKIPSIVFPVRIIALEEGDLETT  
 VVFWNNGHCREFKFVMKKTEEPKYTAFHNTKVIHVEKTSVNEHYIFYCEGRHNGTSSFGMGKLMGRDSS  
 ENPEAMEEFKNFIKRMNLRLNMFVPEIGDKCVESD

**TRTRPLE** - GFP Tag - V

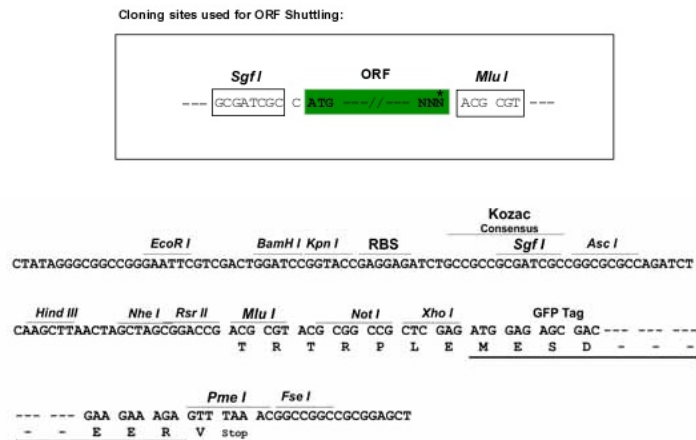
**Chromatograms:** [https://cdn.origene.com/chromatograms/ja2741\\_f03.zip](https://cdn.origene.com/chromatograms/ja2741_f03.zip)



[View online »](#)

Restriction Sites: SgfI-MluI

Cloning Scheme:



ACCN: NM\_153558

ORF Size: 528 bp

OTI Disclaimer: Due to the inherent nature of this plasmid, standard methods to replicate additional amounts of DNA in E. coli are highly likely to result in mutations and/or rearrangements. Therefore, OriGene does not guarantee the capability to replicate this plasmid DNA. Additional amounts of DNA can be purchased from OriGene with batch-specific, full-sequence verification at a reduced cost. Please contact our customer care team at [custsupport@origene.com](mailto:custsupport@origene.com) or by calling 301.340.3188 option 3 for pricing and delivery.

The molecular sequence of this clone aligns with the gene accession number as a point of reference only. However, individual transcript sequences of the same gene can differ through naturally occurring variations (e.g. polymorphisms), each with its own valid existence. This clone is substantially in agreement with the reference, but a complete review of all prevailing variants is recommended prior to use. [More info](#)

OTI Annotation: This clone was engineered to express the complete ORF with an expression tag. Expression varies depending on the nature of the gene.

Components: The ORF clone is ion-exchange column purified and shipped in a 2D barcoded Matrix tube containing 10ug of transfection-ready, dried plasmid DNA (reconstitute with 100 ul of water).

**Reconstitution Method:**

1. Centrifuge at 5,000xg for 5min.
2. Carefully open the tube and add 100ul of sterile water to dissolve the DNA.
3. Close the tube and incubate for 10 minutes at room temperature.
4. Briefly vortex the tube and then do a quick spin (less than 5000xg) to concentrate the liquid at the bottom.
5. Store the suspended plasmid at -20°C. The DNA is stable for at least one year from date of shipping when stored at -20°C.

**RefSeq:** [NM\\_153558.1](#), [NP\\_705786.1](#)

**RefSeq Size:** 738 bp

**RefSeq ORF:** 531 bp

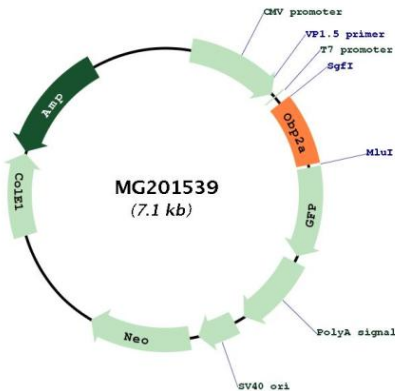
**Locus ID:** 227627

**UniProt ID:** [Q8K1H9](#)

**Cytogenetics:** 2 A3

**Gene Summary:** May play a role in male fertility. May act as a retinoid carrier protein within the epididymis. [UniProtKB/Swiss-Prot Function]

**Product images:**



Circular map for MG201539