

Product datasheet for **MG201520**

Arf6 (NM_007481) Mouse Tagged ORF Clone

Product data:

Product Type: Expression Plasmids
Product Name: Arf6 (NM_007481) Mouse Tagged ORF Clone
Tag: TurboGFP
Symbol: Arf6
Synonyms: A1788669; AW496366
Mammalian Cell Selection: Neomycin
Vector: pCMV6-AC-GFP (PS100010)
E. coli Selection: Ampicillin (100 ug/mL)
ORF Nucleotide Sequence: >MG201520 representing NM_007481
 Red=Cloning site Blue=ORF Green=Tags(s)

TTTTGTAATACGACTCACTATAGGGCGGCCGGAATTCGTCGACTGGATCCGGTACCGAGGAGATCTGCC
 GCC**CGATCGCC**

ATGGGGAAGGTGCTATCCAAGATCTTCGGGAACAAGGAAATGCGGATCCTCATGCTGGCCTGGACGCAG
 CCGGCAAGACAACGATCCTGTACAAGTTGAAGCTGGGCCAATCGGTGACCACCATCCCCACGGTGGGCTT
 CAACGTGGAGACGGTGACTTACAAAAACGTCAAGTTCAACGTGTGGGATGTGGCGGCCAGGACAAGATC
 CGGCCGCTCTGGCGCATTACTACACCGGGACCCAGGGTCTGATCTTCGTGGTAGACTGCGCCGACCGCG
 ACCGCATCGACGAGGCCCGCCAGGAGCTGCACCGCATTATCAATGACCGGAGATGAGGGACGCCATCAT
 CCTCATCTTCGCAACAAGCAGGACCTGCCGATGCCATGAAACCCCATGAGATCCAGGAGAAACTGGGC
 CTGACCCGGATTGCGGACAGGAAGTGGTATGTGCAGCCCTCTGTGCCACCTCCGGGACGGACTCTATG
 AGGGGCTCACATGGTTAACCTCTAACTACAAATCC

ACGCGTACGCGGCCGCTCGAG - GFP Tag - GTTTAA

Protein Sequence: >MG201520 representing NM_007481
 Red=Cloning site Green=Tags(s)

MGKVLKIFGNKEMRILMLGLDAAGKTTILYKLLKQSVTTIPTVGFNVETVYKVKFNVDVGGQDKI
 RPLWRHYTGTQGLIFVVDCAADRDRIDEARQELHRIINDREMRDAIILIFANKQDLPDAMPHEIQEKLGL
 LTRIRDRNWYVQPSCATSGDGLYEGLTWLTSNYKS

TRTRPLE - GFP Tag - V

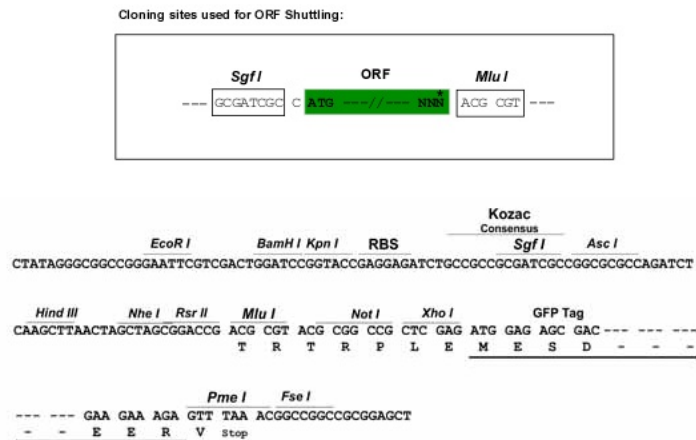
Chromatograms: https://cdn.origene.com/chromatograms/ja2462_e07.zip



[View online »](#)

Restriction Sites: SgfI-MluI

Cloning Scheme:



ACCN: NM_007481

ORF Size: 525 bp

OTI Disclaimer: Due to the inherent nature of this plasmid, standard methods to replicate additional amounts of DNA in E. coli are highly likely to result in mutations and/or rearrangements. Therefore, OriGene does not guarantee the capability to replicate this plasmid DNA. Additional amounts of DNA can be purchased from OriGene with batch-specific, full-sequence verification at a reduced cost. Please contact our customer care team at custsupport@origene.com or by calling 301.340.3188 option 3 for pricing and delivery.

The molecular sequence of this clone aligns with the gene accession number as a point of reference only. However, individual transcript sequences of the same gene can differ through naturally occurring variations (e.g. polymorphisms), each with its own valid existence. This clone is substantially in agreement with the reference, but a complete review of all prevailing variants is recommended prior to use. [More info](#)

OTI Annotation: This clone was engineered to express the complete ORF with an expression tag. Expression varies depending on the nature of the gene.

Components: The ORF clone is ion-exchange column purified and shipped in a 2D barcoded Matrix tube containing 10ug of transfection-ready, dried plasmid DNA (reconstitute with 100 ul of water).

Reconstitution Method:

1. Centrifuge at 5,000xg for 5min.
2. Carefully open the tube and add 100ul of sterile water to dissolve the DNA.
3. Close the tube and incubate for 10 minutes at room temperature.
4. Briefly vortex the tube and then do a quick spin (less than 5000xg) to concentrate the liquid at the bottom.
5. Store the suspended plasmid at -20°C. The DNA is stable for at least one year from date of shipping when stored at -20°C.

Note: Plasmids are not sterile. For experiments where strict sterility is required, filtration with 0.22um filter is required.

RefSeq: [NM_007481.3](#), [NP_031507.1](#)

RefSeq Size: 3740 bp

RefSeq ORF: 528 bp

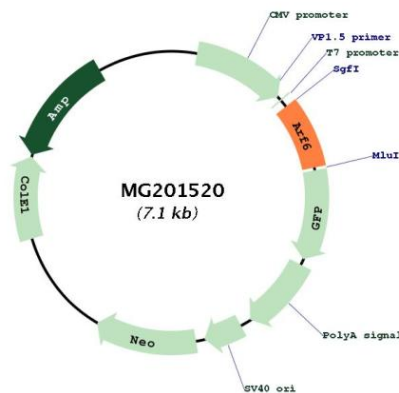
Locus ID: 11845

UniProt ID: [P62331](#)

Cytogenetics: 12 C2

Gene Summary: GTP-binding protein involved in protein trafficking that regulates endocytic recycling and cytoskeleton remodeling (PubMed:11950392). Required for normal completion of mitotic cytokinesis. Involved in the regulation of dendritic spine development, contributing to the regulation of dendritic branching and filopodia extension. Plays an important role in membrane trafficking, during junctional remodeling and epithelial polarization. Regulates surface levels of adherens junction proteins such as CDH1 (PubMed:29420262, PubMed:20080746). Required for NTRK1 sorting to the recycling pathway from early endosomes (By similarity).[UniProtKB/Swiss-Prot Function]

Product images:



Circular map for MG201520