

## Product datasheet for **MG201519**

### **Pthlh (NM\_008970) Mouse Tagged ORF Clone**

#### Product data:

**Product Type:** Expression Plasmids  
**Product Name:** Pthlh (NM\_008970) Mouse Tagged ORF Clone  
**Tag:** TurboGFP  
**Symbol:** Pthlh  
**Synonyms:** PLP; Pt; PTH-I; PTH-like; Pthrp  
**Mammalian Cell Selection:** Neomycin  
**Vector:** pCMV6-AC-GFP (PS100010)  
**E. coli Selection:** Ampicillin (100 ug/mL)  
**ORF Nucleotide Sequence:** >MG201519 representing NM\_008970  
 Red=Cloning site Blue=ORF Green=Tags(s)

TTTTGTAATACGACTCACTATAGGGCGGCCGGAATTCGTCGACTGGATCCGGTACCGAGGAGATCTGCC  
 GCC**CGATCGCC**

ATGCTGCGGAGGCTGGTTCAGCAGTGGAGTGTCTGGTATTCCTGCTCAGCTACTCCGTGCCCTCCCGG  
 GGCGTTCCGGTGGAGGGCTTGGCCGAGGCTCAAACGCGCTGTGTCTGAACATCAGCTACTGCATGACAA  
 GGGCAAGTCCATCCAAGACTTGCGCCCGTTTCTTCCACCATCTGATCGCGGAGATCCACACAGCC  
 GAAATCAGAGCTACCTCGGAGGTGTCCCCAACCCAAACCTGCTCCCAACCAAAAACCACCCCGTGC  
 GGTGGGTGAGCAGATGAGGGCAGATACCTAACTCAGGAAACCAACAAGGTGGAGACGTACAAAGAACA  
 GCCACTCAAGACACCCGGGAAGAAGAAGAAAGCAAGCCTGGGAAACGCAGAGAACAGGAGAAAAAGAA  
 CGAAGGACTCGGTCTGCCTGGCCAAGCACAGCTGCGAGTGGCCTGCTTGAGGACCCCTGCCCCACACCT  
 CCAGGACCTCGCTGGAGCCCAGCTTAAGGACGCAT

**ACGCGT**ACGCGGCCGCTCGAG - GFP Tag - GTTTAA

**Protein Sequence:** >MG201519 representing NM\_008970  
 Red=Cloning site Green=Tags(s)

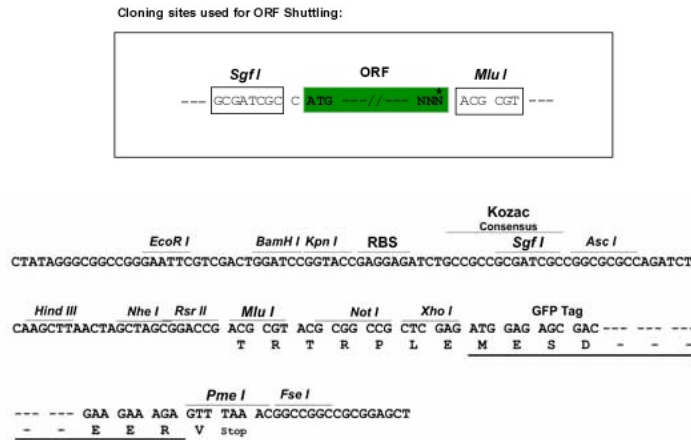
MLRRLVQQWSVLVFLLSYSVPSRGRSVEGLGRRLLKRAVSEHQLLHDKGKSIQDLRRRFFLHHLIAEIH  
 TA EIRATSEVSPNSKPAPNTKNHPVRFGSDDDEGRYLTQETNKVETYKEQPLKTPGKKKKGKPGKRR  
 EQEKK RRTRSAWPSTAASGLLEDPLPHTSRTSLEPSLRTH

**TRTRPLE** - GFP Tag - V

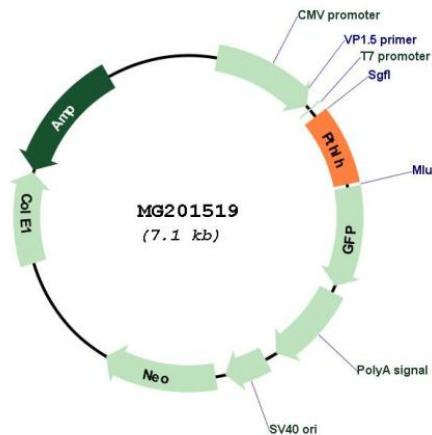
**Restriction Sites:** Sgfl-MluI



**Cloning Scheme:**



**Plasmid Map:**



**ACCN:** NM\_008970

**ORF Size:** 525 bp

**OTI Disclaimer:** The molecular sequence of this clone aligns with the gene accession number as a point of reference only. However, individual transcript sequences of the same gene can differ through naturally occurring variations (e.g. polymorphisms), each with its own valid existence. This clone is substantially in agreement with the reference, but a complete review of all prevailing variants is recommended prior to use. [More info](#)

**OTI Annotation:** This clone was engineered to express the complete ORF with an expression tag. Expression varies depending on the nature of the gene.

<b>Components:</b>	The ORF clone is ion-exchange column purified and shipped in a 2D barcoded Matrix tube containing 10ug of transfection-ready, dried plasmid DNA (reconstitute with 100 ul of water).
<b>Reconstitution Method:</b>	<ol style="list-style-type: none"><li>1. Centrifuge at 5,000xg for 5min.</li><li>2. Carefully open the tube and add 100ul of sterile water to dissolve the DNA.</li><li>3. Close the tube and incubate for 10 minutes at room temperature.</li><li>4. Briefly vortex the tube and then do a quick spin (less than 5000xg) to concentrate the liquid at the bottom.</li><li>5. Store the suspended plasmid at -20°C. The DNA is stable for at least one year from date of shipping when stored at -20°C.</li></ol>
<b>RefSeq:</b>	<u>NM_008970.1, NP_032996.1</u>
<b>RefSeq Size:</b>	1592 bp
<b>RefSeq ORF:</b>	528 bp
<b>Locus ID:</b>	19227
<b>Cytogenetics:</b>	6 78.19 cM
<b>Gene Summary:</b>	This gene encodes a member of the parathyroid family of hormones that possesses distinct paracrine and intracrine signaling roles such as regulation of circulating calcium, transplacental calcium transport, osteoclast inhibition, renal bicarbonate excretion and regulation of apoptosis. The encoded protein undergoes proteolytic processing to generate multiple active peptides with distinct signaling functions. The homozygous deletion of this gene leads to death shortly after birth with a chondrodystrophic phenotype characterized by premature chondrocyte differentiation and accelerated bone formation. [provided by RefSeq, Jul 2015]