

Product datasheet for **MG201445**

Timm17a (NM_011590) Mouse Tagged ORF Clone

Product data:

Product Type: Expression Plasmids
Product Name: Timm17a (NM_011590) Mouse Tagged ORF Clone
Tag: TurboGFP
Symbol: Timm17a
Synonyms: 17kDa; mTim17a
Mammalian Cell Selection: Neomycin
Vector: pCMV6-AC-GFP (PS100010)
E. coli Selection: Ampicillin (100 ug/mL)
ORF Nucleotide Sequence: >MG201445 representing NM_011590
Red=Cloning site Blue=ORF Green=Tags(s)

TTTTGTAATACGACTCACTATAGGGCGCCGGGAATTCGTCGACTGGATCCGGTACCGAGGAGATCTGCC
GCC**CGATCGCC**

ATGGAGGAATACGCGAGAGAGCCGTGCCCTGGCGAATTGTAGATGACTGTGGCGGTGCATTTACCATGG
GCACCATAGGTGGTGGCATCTTCCAGGCCCTCAAAGGTTTTCGAAATTCTCCAGTGGGAATAAACACAG
ACTCCGAGGAAGTTTGACAGCTATTAACCAGGGCTCCACAGTTGGGAGGTAGCTTTGCAGTTTGGGA
GGACTGTTTTCCAGGATGACTGCAGTATGTTTCAAATACGAGGCAAAGAAGACCCCTGGAACCTCATCA
CTAGCGGTGCCTAACAGGAGCCATCCTGGCAGCAAGAAATGGACCGGTAGCCATGGTTGGTCCGCTGC
GATGGGCGGCATTCTCCTAGCTTAATTGAAGGAGCTGGTATCTTGCTGACAAGATTTGCCTCTGCACAG
TTTCCCAATGGCCCTCAGTTCAGTCACTGAAGATCACTCCAGTTGCCCTCCAGCCAGTTGCCATCCTCGCGT
TTGGAGACTACCGACAGTATCAG

ACGCGTACGCGGCCGCTCGAG - GFP Tag - GTTTAA

Protein Sequence: >MG201445 representing NM_011590
Red=Cloning site Green=Tags(s)
MEEYAREPCPWRIVDDCGGAFTMGTIGGGIFQAFKGFNRSPVGINHRLRGLSLTAIKTRAPQLGGSFAVWG
GLFSTIDCSMVQIRGKEDPWSITSGALTGAILAARNGPVAMVGSAAAMGGILLALIEGAGILLTRFASAQ
FPNGPQFTEDHSQLPSSQLPSSPFGDYRQYQ

TRTRPLE - GFP Tag - V

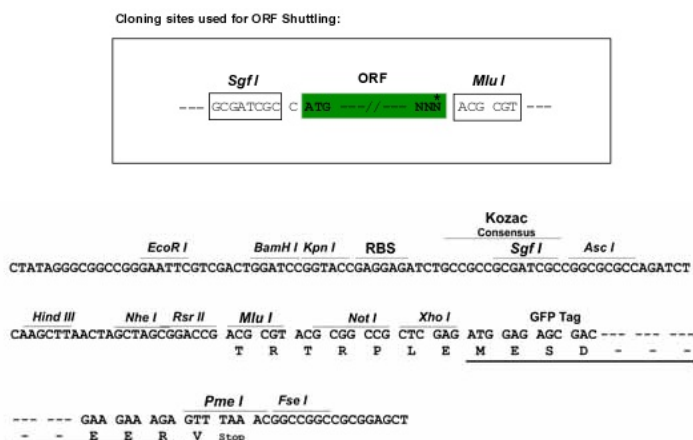
Chromatograms: https://cdn.origene.com/chromatograms/ja3793_a07.zip



[View online »](#)

Restriction Sites: SgfI-MluI

Cloning Scheme:



ACCN: NM_011590

ORF Size: 513 bp

OTI Disclaimer: The molecular sequence of this clone aligns with the gene accession number as a point of reference only. However, individual transcript sequences of the same gene can differ through naturally occurring variations (e.g. polymorphisms), each with its own valid existence. This clone is substantially in agreement with the reference, but a complete review of all prevailing variants is recommended prior to use. [More info](#)

OTI Annotation: This clone was engineered to express the complete ORF with an expression tag. Expression varies depending on the nature of the gene.

Components: The ORF clone is ion-exchange column purified and shipped in a 2D barcoded Matrix tube containing 10ug of transfection-ready, dried plasmid DNA (reconstitute with 100 ul of water).

Reconstitution Method:

1. Centrifuge at 5,000xg for 5min.
2. Carefully open the tube and add 100ul of sterile water to dissolve the DNA.
3. Close the tube and incubate for 10 minutes at room temperature.
4. Briefly vortex the tube and then do a quick spin (less than 5000xg) to concentrate the liquid at the bottom.
5. Store the suspended plasmid at -20°C. The DNA is stable for at least one year from date of shipping when stored at -20°C.

RefSeq: [NM_011590.1](#), [NP_035720.1](#)

RefSeq Size: 917 bp

RefSeq ORF: 516 bp

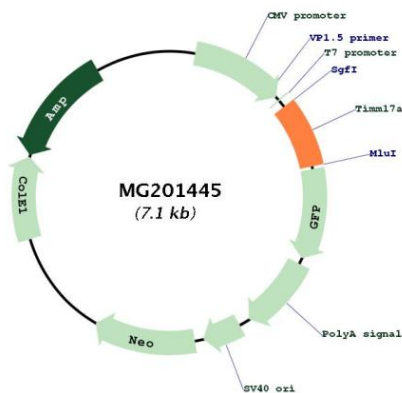
Locus ID: 21854

UniProt ID: [Q9Z0V8](#)

Cytogenetics: 1 E4

Gene Summary: Essential component of the TIM23 complex, a complex that mediates the translocation of transit peptide-containing proteins across the mitochondrial inner membrane.
[UniProtKB/Swiss-Prot Function]

Product images:



Circular map for MG201445