

Product datasheet for **MG201437**

TdGF1 (NM_011562) Mouse Tagged ORF Clone

Product data:

Product Type: Expression Plasmids
Product Name: TdGF1 (NM_011562) Mouse Tagged ORF Clone
Tag: TurboGFP
Symbol: TdGF1
Synonyms: CR1; cripto
Mammalian Cell Selection: Neomycin
Vector: pCMV6-AC-GFP (PS100010)
E. coli Selection: Ampicillin (100 ug/mL)
ORF Nucleotide Sequence: >MG201437 representing NM_011562
 Red=Cloning site Blue=ORF Green=Tags(s)

TTTTGTAATACGACTCACTATAGGGCGGCCGGAATTCGTCGACTGGATCCGGTACCGAGGAGATCTGCC
 GCC**CGATCGCC**

ATGGGGTACTTCTCATCCAGTGTGGTTTTGCTTGTGGCCATTTCCAGTGCCTTGAATTTGGACCCGTTG
 CTGGGAGAGACCTTGCCATCAGAGATAACAGCATTGGGACCAGAAAGAACCTGCCGTACGCGATCGGTC
 TTTCCAGTTTGTGCTTCCGTGGGATACAGAACAGTAAGTCGCTTAATAAAACTTGCTGTCTGAATGGA
 GGGACTTGCATCCTGGGGTCTTCTGTGCTGCCCTCCTCCTTCTATGGACGCAACTGTGAACATGATG
 TTCGAAAGAGCACTGTGGGTCTATCCTCCATGGCACCTGGCTGCCCAAGAAGTGTCCCTGTGCAGATG
 CTGGCACGGCCAGCTCCACTGTCTTCTCAGACCTTTCTACCTGGCTGTGATGGTACGTCATGGACCAG
 GACCTCAAAGCATCCGGGACTCCGTGTCAAACGCCGTCTGTGACGACCACCTTTATGCTAGCTGGCGCT
 GCCTTTTCTAGATATGAAAGTA

ACGCGTACGCGGCCGCTCGAG - GFP Tag - GTTTAA

Protein Sequence: >MG201437 representing NM_011562
 Red=Cloning site Green=Tags(s)

MGYFSSSVLLVAISSAFEFGPVAGRDLAIRDNSIWDQKEPAVRDRSFQFVPSVGIQNSKSLNKTCLLNG
 GTCILGSFCACPPSFYGRNCEHDVYRKEHCGSILHGTWLPKKCSLCRCWHGQLHCLPQTFLPGCDGHVMDQ
 DLKASGTPCQTPSVTTTFMLAGACLFLDMKV

TRTRPLE - GFP Tag - V

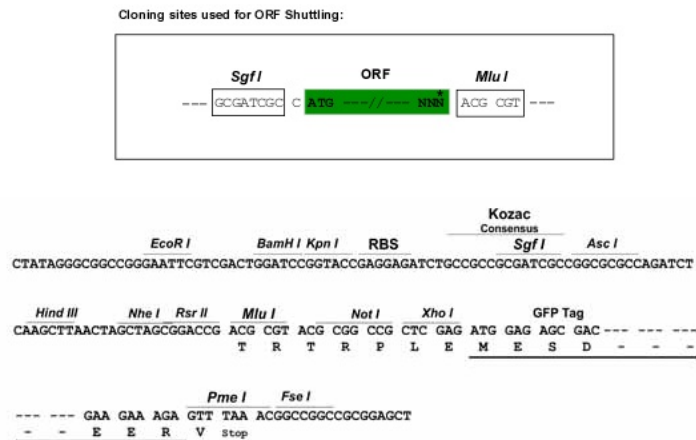
Chromatograms: https://cdn.origene.com/chromatograms/ja1665_a08.zip



[View online »](#)

Restriction Sites: SgfI-MluI

Cloning Scheme:



ACCN: NM_011562

ORF Size: 513 bp

OTI Disclaimer: The molecular sequence of this clone aligns with the gene accession number as a point of reference only. However, individual transcript sequences of the same gene can differ through naturally occurring variations (e.g. polymorphisms), each with its own valid existence. This clone is substantially in agreement with the reference, but a complete review of all prevailing variants is recommended prior to use. [More info](#)

OTI Annotation: This clone was engineered to express the complete ORF with an expression tag. Expression varies depending on the nature of the gene.

Components: The ORF clone is ion-exchange column purified and shipped in a 2D barcoded Matrix tube containing 10ug of transfection-ready, dried plasmid DNA (reconstitute with 100 ul of water).

Reconstitution Method:

1. Centrifuge at 5,000xg for 5min.
2. Carefully open the tube and add 100ul of sterile water to dissolve the DNA.
3. Close the tube and incubate for 10 minutes at room temperature.
4. Briefly vortex the tube and then do a quick spin (less than 5000xg) to concentrate the liquid at the bottom.
5. Store the suspended plasmid at -20°C. The DNA is stable for at least one year from date of shipping when stored at -20°C.

RefSeq: [NM_011562.2](#), [NP_035692.2](#)

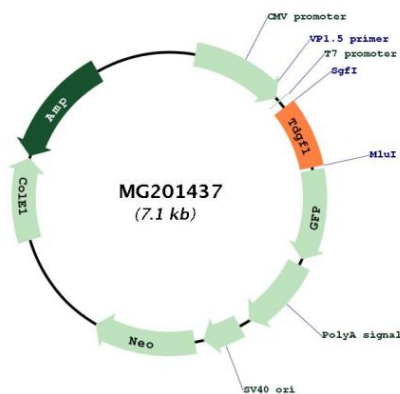
RefSeq Size: 1948 bp

RefSeq ORF: 516 bp

Locus ID: 21667

Cytogenetics: 9 60.79 cM

Product images:



Circular map for MG201437