

Product datasheet for **MG201397**

Cd302 (BC005501) Mouse Tagged ORF Clone

Product data:

Product Type: Expression Plasmids
Product Name: Cd302 (BC005501) Mouse Tagged ORF Clone
Tag: TurboGFP
Symbol: Cd302
Synonyms: 1110055L24Rik; AI159627
Mammalian Cell Selection: Neomycin
Vector: pCMV6-AC-GFP (PS100010)
E. coli Selection: Ampicillin (100 ug/mL)
ORF Nucleotide Sequence: >MG201397 representing BC005501
 Red=Cloning site Blue=ORF Green=Tags(s)

TTTTGTAATACGACTCACTATAGGGCGCCGGGAATTCGTCGACTGGATCCGGTACCGAGGAGATCTGCC
 GCC**CGATCGCC**

ATGGTAAGCATACACAATGAAGAGGAAAACGCGTTTATACTGGACACTTTGCAAAAGCGATGGAAGGGTC
 CAGATGATCTCCTGCTAGGCATGTTCTATGACACTGATGCAACTTTCAAGTGGTATGATCATTCAA
 TATGACATTCGACAAGTGGCAGATCAAGATGGTGAGGACCTAGTTGATACCTGTGGTTTTCTGTACACC
 AAGACAGGTGAATGGAGAAAAGGGGATTGTGAAATCTCTTCTGTGGAGGGAACACTTTGCAAAGCAGCAA
 TCCCATATGACAAGAAGTATTTATCAGATAACCCACATTTAATATCGACTCTGGTATCGCTAGCACAGT
 AACTCTGGCAGTTTTGGGAGCGATCATTGGTTCTCTATAGAAGAAACGCGCTCTGGCTTACCTCT
 TTTTACCTGCACCACTGTCACCTTACAGTGATGGCTGTGCCCTGGTAGTGCAGAAGAAGATGAATATG
 CTGTTTCAGCTGGAC

AG**CGGACCG**ACGCGTACGCGCCGCTCGAG - GFP Tag - GTTTAA

Protein Sequence: >MG201397 representing BC005501
 Red=Cloning site Green=Tags(s)

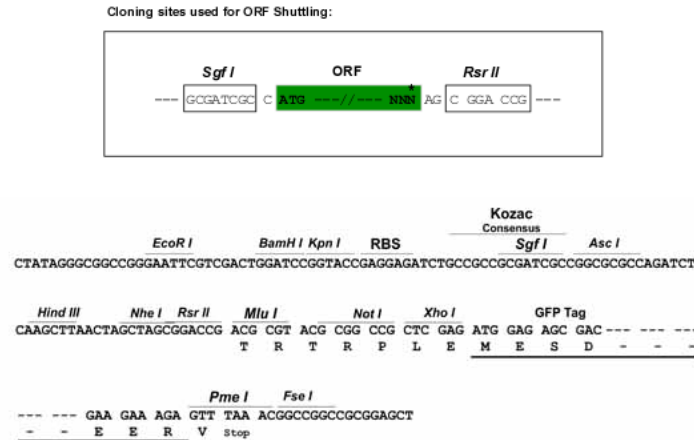
MVSIHNEEENAFILDTLQKRWGPDDLLLGMFYDIDDATFKWYDHSNMTFDKWADQDGEDLVDTCGFLYT
 KTGEWRKGDCEISSVEGTLCKAAIPYDKKYLSDNHILISTLVIASVTVLAVLGAIWFLYRRNARSGFTS
 FSPAPLSPYSDGCALVVAEEDYAVQLD

SGPTRRRLE - GFP Tag - V

Restriction Sites: Sgfl-RsrII



[View online »](#)

Cloning Scheme:


ACCN: BC005501

ORF Size: 506 bp

OTI Disclaimer: The molecular sequence of this clone aligns with the gene accession number as a point of reference only. However, individual transcript sequences of the same gene can differ through naturally occurring variations (e.g. polymorphisms), each with its own valid existence. This clone is substantially in agreement with the reference, but a complete review of all prevailing variants is recommended prior to use. [More info](#)

OTI Annotation: This clone was engineered to express the complete ORF with an expression tag. Expression varies depending on the nature of the gene.

Components: The ORF clone is ion-exchange column purified and shipped in a 2D barcoded Matrix tube containing 10ug of transfection-ready, dried plasmid DNA (reconstitute with 100 ul of water).

Reconstitution Method:

1. Centrifuge at 5,000xg for 5min.
2. Carefully open the tube and add 100ul of sterile water to dissolve the DNA.
3. Close the tube and incubate for 10 minutes at room temperature.
4. Briefly vortex the tube and then do a quick spin (less than 5000xg) to concentrate the liquid at the bottom.
5. Store the suspended plasmid at -20°C. The DNA is stable for at least one year from date of shipping when stored at -20°C.

RefSeq: [BC005501](#), [AAH05501](#)

RefSeq Size: 798 bp

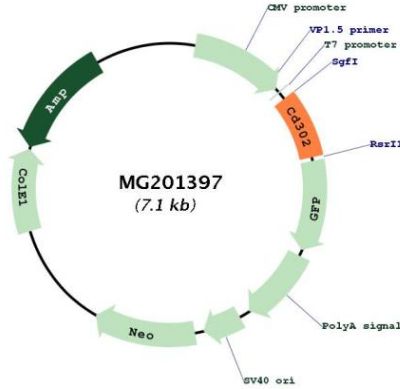
RefSeq ORF: 506 bp

Locus ID: 66205

Cytogenetics: 2 C1.1

Gene Summary: Potential multifunctional C-type lectin receptor that may play roles in endocytosis and phagocytosis as well as in cell adhesion and migration.[UniProtKB/Swiss-Prot Function]

Product images:



Circular map for MG201397