

## Product datasheet for **MG201314**

### Ppia (NM\_008907) Mouse Tagged ORF Clone

#### Product data:

**Product Type:** Expression Plasmids  
**Product Name:** Ppia (NM\_008907) Mouse Tagged ORF Clone  
**Tag:** TurboGFP  
**Symbol:** Ppia  
**Synonyms:** 2700098C05; Cphn; CyP-18; CypA  
**Mammalian Cell Selection:** Neomycin  
**Vector:** pCMV6-AC-GFP (PS100010)  
**E. coli Selection:** Ampicillin (100 ug/mL)  
**ORF Nucleotide Sequence:** >MG201314 representing NM\_008907  
 Red=Cloning site Blue=ORF Green=Tags(s)

TTTTGTAATACGACTCACTATAGGGCGGCCGGAATTCGTCGACTGGATCCGGTACCGAGGAGATCTGCC  
 GCC**CGATCGCC**

ATGGTCAACCCACCCTGTTCTTCGACATCACGGCCGATGACGAGCCCTTGGCCCGCTCTCCTTCGAGC  
 TGTTTGCAGACAAAGTTCCAAAGACAGCAGAAAACCTTCGAGCTCTGAGCACTGGAGAGAAAGGATTTGG  
 CTATAAGGGTTCCTCTTCACAGAATTATCCAGGATTCATGTGCCAGGGTGGTACTTACACGCCAT  
 AATGGCACTGGCGCAGGTCCATCTACGGAGAGAAATTTGAGGATGAGAACTTCATCCTAAAGCATAACAG  
 GTCTTGGCATCTGTCCATGGCAAATGCTGGACCAACACAAACGTTCCAGTTTTTATCTGCACTGC  
 CAAGACTGAATGGCTGGATGGCAAGCATGTGGTCTTTGGGAAGGTGAAAGAAGGCATGAACATTGTGGAA  
 GCCATGGAGCGTTTTGGGTCCAGGAATGCAAGACCAGCAAGAAGATCACCATTTCCGACTGTGGACAGC  
 TC

**ACGCGT**ACGCGGCCGCTCGAG - GFP Tag - GTTTAA

**Protein Sequence:** >MG201314 representing NM\_008907  
 Red=Cloning site Green=Tags(s)

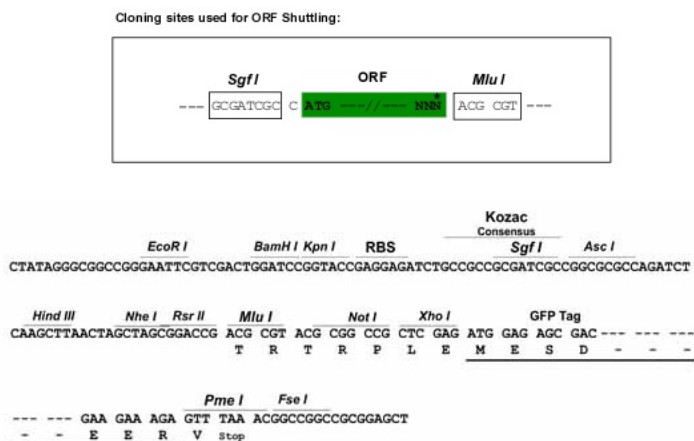
MVNPTVFFDITADDEPLGRVSFELFADKVPKTAENFRALSTGEKFGYKGS SFHRIIPGFMCQGGDFTRH  
 NGTGGRSIYGEKFEDEFILKHTGPGILSMANAGPNTNGSQFFICTAKTEWLDGKHVVFVKYKEGMNIVE  
 AMERFGSRNGKTSKKITISDCGQL

**TRTRPLE** - GFP Tag - V

**Restriction Sites:** Sgfl-MluI



Cloning Scheme:



ACCN: NM\_008907

ORF Size: 492 bp

OTI Disclaimer: The molecular sequence of this clone aligns with the gene accession number as a point of reference only. However, individual transcript sequences of the same gene can differ through naturally occurring variations (e.g. polymorphisms), each with its own valid existence. This clone is substantially in agreement with the reference, but a complete review of all prevailing variants is recommended prior to use. [More info](#)

OTI Annotation: This clone was engineered to express the complete ORF with an expression tag. Expression varies depending on the nature of the gene.

Components: The ORF clone is ion-exchange column purified and shipped in a 2D barcoded Matrix tube containing 10ug of transfection-ready, dried plasmid DNA (reconstitute with 100 ul of water).

Reconstitution Method:

1. Centrifuge at 5,000xg for 5min.
2. Carefully open the tube and add 100ul of sterile water to dissolve the DNA.
3. Close the tube and incubate for 10 minutes at room temperature.
4. Briefly vortex the tube and then do a quick spin (less than 5000xg) to concentrate the liquid at the bottom.
5. Store the suspended plasmid at -20°C. The DNA is stable for at least one year from date of shipping when stored at -20°C.

RefSeq: [NM\\_008907.2](#)

RefSeq Size: 736 bp

RefSeq ORF: 495 bp

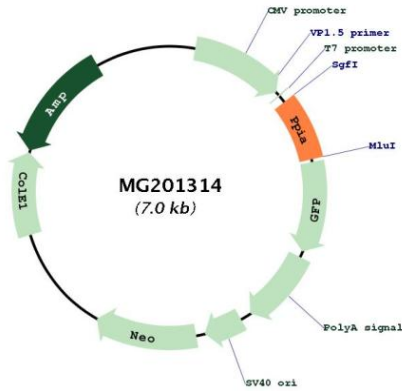
Locus ID: 268373

UniProt ID: [P17742](#)

**Cytogenetics:** 11 3.97 cM

**Gene Summary:** PPIase that catalyzes the cis-trans isomerization of proline imidic peptide bonds in oligopeptides and may therefore assist protein folding.[UniProtKB/Swiss-Prot Function]

**Product images:**



Circular map for MG201314