

## Product datasheet for **MG201281**

### Ly86 (NM\_010745) Mouse Tagged ORF Clone

#### Product data:

**Product Type:** Expression Plasmids  
**Product Name:** Ly86 (NM\_010745) Mouse Tagged ORF Clone  
**Tag:** TurboGFP  
**Symbol:** Ly86  
**Synonyms:** ly86\_tv2; MD-1; MD1  
**Mammalian Cell Selection:** Neomycin  
**Vector:** pCMV6-AC-GFP (PS100010)  
**E. coli Selection:** Ampicillin (100 ug/mL)  
**ORF Nucleotide Sequence:** >MG201281 representing NM\_010745  
 Red=Cloning site Blue=ORF Green=Tags(s)

TTTTGTAATACGACTCACTATAGGGCGGCCGGAATTCGTCGACTGGATCCGGTACCGAGGAGATCTGCC  
 GCC**CGATCGCC**

ATGAATGGTGTGCGAGCTGCCCTCCTTGTGTGGATTCTGACTTCTCCGAGCAGCAGTGACCATGGCAGCG  
 AAAATGGTTGGCCCAAGCACACGGCCTGCAACAGTGGGGCTTGAAGTAGTCTACCAGAGCTGTGATCC  
 CTTACAGGATTTTGGCCTTCCATTGACCAGTGTTCCAAGCAGATCCAATCAAATCTCAACATTAGATTT  
 GGCATCATTCTGAGACAGGATATCAGAAAGCTGTTTCTGGACATAACTCTGATGGCAAAAGGCTCTTCTA  
 TTCTGAATACTCTATCCCCTTTGTGAGGAGGACCAGCCAAGTCTCATTCTGTGGAAGAAGAAAAGG  
 AGAACAGATATACTATGCCGGCCCTGTCAATAACCCTGGACTTGATGTTCCACAGGGAGAATATCAGCTC  
 TTGCTGGAAGTGTACAATGAAAACCGTGCTACTGTGGCTTGCCAATGCCACTGTCACCTCCTCC

ACGCGTACGCGGCCGCTCGAG - GFP Tag - GTTTAA

**Protein Sequence:** >MG201281 representing NM\_010745  
 Red=Cloning site Green=Tags(s)

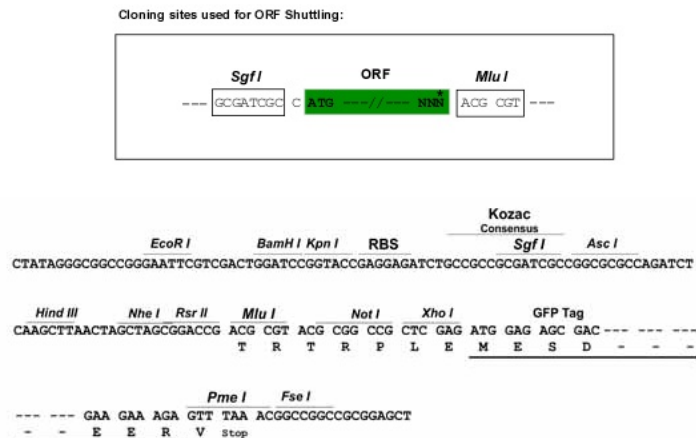
MNGVAAALLVWILTSPSSSDHSGSENGWPKHTACNSGGLEVYQSCDPLQDFGLSIDQCSKQIQSNLNIRF  
 GIILRQDIRKFLDITLMAKGSSILNYSYPLCEEDQPKFSFCGRRKGEQIYYAGPVNNPGLDVPQGEYQL  
 LLELYNENRATVACANATVTSS

TRTRPLE - GFP Tag - V

**Restriction Sites:** SgfI-MluI



[View online »](#)

**Cloning Scheme:**


**ACCN:** NM\_010745

**ORF Size:** 486 bp

**OTI Disclaimer:** The molecular sequence of this clone aligns with the gene accession number as a point of reference only. However, individual transcript sequences of the same gene can differ through naturally occurring variations (e.g. polymorphisms), each with its own valid existence. This clone is substantially in agreement with the reference, but a complete review of all prevailing variants is recommended prior to use. [More info](#)

**OTI Annotation:** This clone was engineered to express the complete ORF with an expression tag. Expression varies depending on the nature of the gene.

**Components:** The ORF clone is ion-exchange column purified and shipped in a 2D barcoded Matrix tube containing 10ug of transfection-ready, dried plasmid DNA (reconstitute with 100 ul of water).

**Reconstitution Method:**

1. Centrifuge at 5,000xg for 5min.
2. Carefully open the tube and add 100ul of sterile water to dissolve the DNA.
3. Close the tube and incubate for 10 minutes at room temperature.
4. Briefly vortex the tube and then do a quick spin (less than 5000xg) to concentrate the liquid at the bottom.
5. Store the suspended plasmid at -20°C. The DNA is stable for at least one year from date of shipping when stored at -20°C.

**Note:** Plasmids are not sterile. For experiments where strict sterility is required, filtration with 0.22um filter is required.

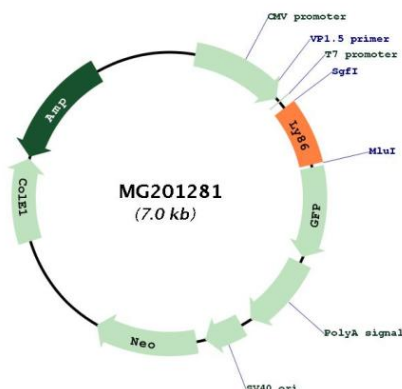
**RefSeq:** [NM\\_010745.2](#), [NP\\_034875.1](#)

**RefSeq Size:** 903 bp

**RefSeq ORF:** 489 bp

Locus ID:	17084
UniProt ID:	<a href="#">O88188</a>
Cytogenetics:	13 A3.3
Gene Summary:	May cooperate with CD180 and TLR4 to mediate the innate immune response to bacterial lipopolysaccharide (LPS) and cytokine production. Important for efficient CD180 cell surface expression.[UniProtKB/Swiss-Prot Function]

## Product images:



Circular map for MG201281