

## Product datasheet for **MG201278**

### **Btf3 (BC008233) Mouse Tagged ORF Clone**

#### Product data:

**Product Type:** Expression Plasmids  
**Product Name:** Btf3 (BC008233) Mouse Tagged ORF Clone  
**Tag:** TurboGFP  
**Symbol:** Btf3  
**Synonyms:** 1700054E11Rik  
**Mammalian Cell Selection:** Neomycin  
**Vector:** pCMV6-AC-GFP (PS100010)  
**E. coli Selection:** Ampicillin (100 ug/mL)  
**ORF Nucleotide Sequence:** >MG201278 representing BC008233  
 Red=Cloning site Blue=ORF Green=Tags(s)

TTTTGTAATACGACTCACTATAGGGCGGCCGGAATTCGTCGACTGGATCCGGTACCGAGGAGATCTGCC  
 GCC**CGATCGCC**

ATGAAAGAAACAATCATGAACCAGGAGAACTCGCCAACTGCAGGCACAAGTGCGCATTGGTGGGAAAG  
 GAACTGCTCGTAGGAAGAAGAAGGTGGTTCACAGAACGGCCACAGCAGACGATAAGAACTGCAGTTCTC  
 CTTAAAGAAGTTAGGGTGAACAACATCTGGTATTGAAGAGGTGAACATGTTTACAAACCAAGGAACA  
 GTGATCCATTTTAAACCCCTAAAGTTCAGGCATCCCTGGCAGCAAACACCTTCACCATTACAGGCCACG  
 CTGAGACAAAGCAGCTGACAGAAATGCTTCCCAGCATCCTCAACCAGCTTGGTGCAGACAGCCTGACTAG  
 TTTAAGGAGACTGGCTGAAGCTCTGCCAAACAATCTGTGGATGGAAAAGCACCCCTTGCTACTGGAGAG  
 GATGATGATGATGAAGTTCAGATCTGGTGAGAATTTTATGAGGCTTCTAAGAATGAGGCAAAC

**ACGCGTACGCGGCCGCTCGAG** - GFP Tag - GTTTAA

**Protein Sequence:** >MG201278 representing BC008233  
 Red=Cloning site Green=Tags(s)

MKETIMNQEKLAKLQAQVRIIGGKTARRKKVVRHTATADKKLQFSLKKGVNNSGIEEVMFTNQGT  
 VIHFNPKVQASLAANTFTITGHAETKQLTEMLPSILNQLGADSLTSLRRLAEALPKQSDVGKAPLATGE  
 DDDDEVLDLVENFDEASKNEAN

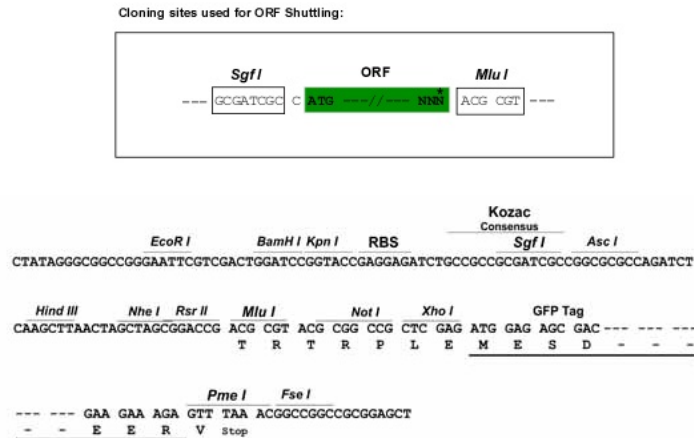
**TRTRPLE** - GFP Tag - V

**Restriction Sites:** Sgfl-MluI

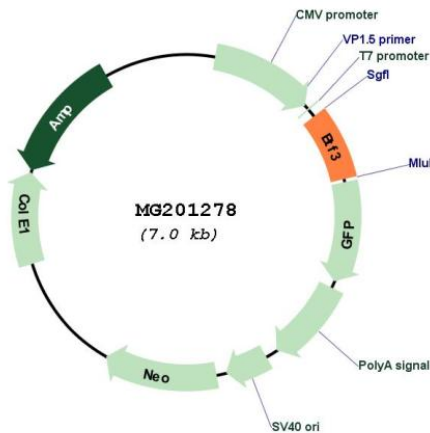


[View online »](#)

## Cloning Scheme:



## Plasmid Map:



ACCN: BC008233

ORF Size: 488 bp

OTI Disclaimer: The molecular sequence of this clone aligns with the gene accession number as a point of reference only. However, individual transcript sequences of the same gene can differ through naturally occurring variations (e.g. polymorphisms), each with its own valid existence. This clone is substantially in agreement with the reference, but a complete review of all prevailing variants is recommended prior to use. [More info](#)

OTI Annotation: This clone was engineered to express the complete ORF with an expression tag. Expression varies depending on the nature of the gene.

<b>Components:</b>	The ORF clone is ion-exchange column purified and shipped in a 2D barcoded Matrix tube containing 10ug of transfection-ready, dried plasmid DNA (reconstitute with 100 ul of water).
<b>Reconstitution Method:</b>	<ol style="list-style-type: none"><li>1. Centrifuge at 5,000xg for 5min.</li><li>2. Carefully open the tube and add 100ul of sterile water to dissolve the DNA.</li><li>3. Close the tube and incubate for 10 minutes at room temperature.</li><li>4. Briefly vortex the tube and then do a quick spin (less than 5000xg) to concentrate the liquid at the bottom.</li><li>5. Store the suspended plasmid at -20°C. The DNA is stable for at least one year from date of shipping when stored at -20°C.</li></ol>
<b>RefSeq:</b>	<u>BC008233</u> , <u>AAH08233</u>
<b>RefSeq Size:</b>	864 bp
<b>RefSeq ORF:</b>	488 bp
<b>Locus ID:</b>	218490
<b>Cytogenetics:</b>	13 D1
<b>Gene Summary:</b>	When associated with NACA, prevents inappropriate targeting of non-secretory polypeptides to the endoplasmic reticulum (ER). Binds to nascent polypeptide chains as they emerge from the ribosome and blocks their interaction with the signal recognition particle (SRP), which normally targets nascent secretory peptides to the ER. BTF3 is also a general transcription factor that can form a stable complex with RNA polymerase II. Required for the initiation of transcription (By similarity).[UniProtKB/Swiss-Prot Function]