

Product datasheet for **MG201137**

Eif5a (NM_181582) Mouse Tagged ORF Clone

Product data:

Product Type: Expression Plasmids
Product Name: Eif5a (NM_181582) Mouse Tagged ORF Clone
Tag: TurboGFP
Symbol: Eif5a
Synonyms: AA410058; D19Wsu54; D19Wsu54e; eIF-4D; eIF-5A; eIF-5A-1; eIF-5A1; Eif4d; Eif5a1
Mammalian Cell Selection: Neomycin
Vector: pCMV6-AC-GFP (PS100010)
E. coli Selection: Ampicillin (100 ug/mL)
ORF Nucleotide Sequence: >MG201137 representing NM_181582
Red=Cloning site Blue=ORF Green=Tags(s)

TTTTGTAATACGACTCACTATAGGGCGGCCGGAATTCGTCGACTGGATCCGGTACCGAGGAGATCTGCC
GCC**CGATCGCC**

ATGGCAGATGATTTGGACTTCGAGACAGGAGATGCAGGGGCTCAGCCACCTTCCCAATGCAGTGCTCAG
CATTACGTAAGAATGGTTTTGTGGTGCTCAAAGGCCGCCATGTAAGATCGTCGAGATGTCTACTTCGAA
GACTGGCAAGCATGGCCATGCCAAGTCCATCTGGTTGGCATTGACATTTTTACTGGGAAGAAATATGAA
GATATCTGCCCGTCGACTCATAATGGATGTCCCAACATCAAACGGAATGACTTCCAGCTGATTGGCA
TCCAGGATGGGTACCTATCCCTGCTCCAGGACAGTGGGGAGGTACGAGAGGACCTTCGCTGCCTGAAGG
AGACCTTGCCAAGGAGATTGAGCAGAAGTATGACTGTGGAGAAGAGATCCTGATCACAGTGTCTGCC
ATGACAGAGGAGGCAGCTGTTGCAATCAAGGCCATGGCAAAA

ACGCGTACGCGGCCGCTCGAG - GFP Tag - GTTTAA

Protein Sequence: >MG201137 representing NM_181582
Red=Cloning site Green=Tags(s)

MADDLDFETGDAGASATFPMQCSALRKNFVVLKGRPCKIVEMSTSKTGKHGAKVHLVGIDIFTGKKYE
DICPSTHNMDVPIKRNDFQLIGIQDGYLSLLQDSGEVREDLRLPEGDLKEIEQKYDCGEEILITVLSA
MTEEAAVAIAKAMAK

TRTRPLE - GFP Tag - V

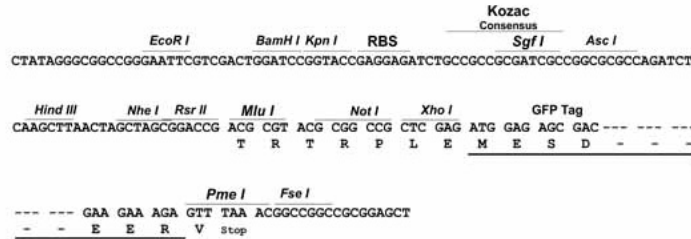
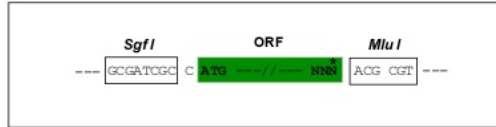
Restriction Sites: Sgfl-MluI



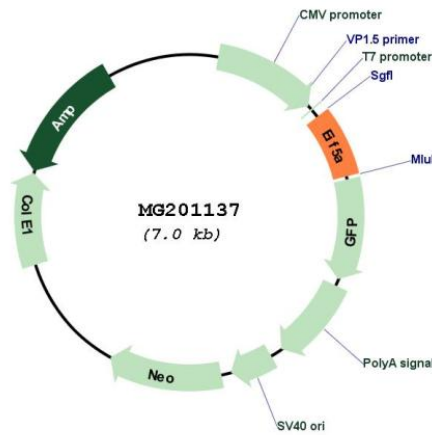
[View online »](#)

Cloning Scheme:

Cloning sites used for ORF Shutting:



Plasmid Map:



ACCN: NM_181582

ORF Size: 462 bp

OTI Disclaimer: The molecular sequence of this clone aligns with the gene accession number as a point of reference only. However, individual transcript sequences of the same gene can differ through naturally occurring variations (e.g. polymorphisms), each with its own valid existence. This clone is substantially in agreement with the reference, but a complete review of all prevailing variants is recommended prior to use. [More info](#)

OTI Annotation: This clone was engineered to express the complete ORF with an expression tag. Expression varies depending on the nature of the gene.

Components:	The ORF clone is ion-exchange column purified and shipped in a 2D barcoded Matrix tube containing 10ug of transfection-ready, dried plasmid DNA (reconstitute with 100 ul of water).
Reconstitution Method:	<ol style="list-style-type: none">1. Centrifuge at 5,000xg for 5min.2. Carefully open the tube and add 100ul of sterile water to dissolve the DNA.3. Close the tube and incubate for 10 minutes at room temperature.4. Briefly vortex the tube and then do a quick spin (less than 5000xg) to concentrate the liquid at the bottom.5. Store the suspended plasmid at -20°C. The DNA is stable for at least one year from date of shipping when stored at -20°C.
RefSeq:	<u>NM_181582.2, NP_853613.1</u>
RefSeq Size:	1303 bp
RefSeq ORF:	465 bp
Locus ID:	276770
UniProt ID:	<u>P63242</u>
Cytogenetics:	11 B3
Gene Summary:	This gene encodes an elongation initiation factor, which participates in protein synthesis. The encoded protein also plays roles in mRNA metabolism, cell proliferation, and cell cycle control. This protein contains a modified lysine residue called hypusine, which appears to be necessary for its function. Alternatively spliced transcript variants have been described. Related pseudogenes exist on chromosomes 2, 5, and 19. [provided by RefSeq, Oct 2009]