

Product datasheet for **MG201065**

Rpp21 (NM_026308) Mouse Tagged ORF Clone

Product data:

Product Type: Expression Plasmids
Product Name: Rpp21 (NM_026308) Mouse Tagged ORF Clone
Tag: TurboGFP
Symbol: Rpp21
Synonyms: 0610037N01Rik
Mammalian Cell Selection: Neomycin
Vector: pCMV6-AC-GFP (PS100010)
E. coli Selection: Ampicillin (100 ug/mL)
ORF Nucleotide Sequence: >MG201065 representing NM_026308
Red=Cloning site Blue=ORF Green=Tags(s)

TTTTGTATACGACTCACTATAGGGCGGCCGGAATTCGTCGACTGGATCCGGTACCGAGGAGATCTGCC
 GCCCGATCGCC

ATGGCGGGCCCACTGAAGGACCGGGAAGCCTTCCAGAGACTCAGCTTCCTGTACCAGGCTGCACACTGCG
 TCCTCTCTCAGAACCCGAGAACCGGCGCTGGCTAGGTTTTACTGCCACACAGAGAAAACCATCGCGAA
 GCGGCTGGTCTCCGGCAGGACCCCTCTGTGAAGAGGACGCTCTGTCGAGCTGCTCCTCTCTCCTCATT
 CCGGGCCTCACCTGCACGCAGCGCCAGAGACGCCGAAAGGGACAGCGCTGGACAGTACAGACCTGTCTGA
 CATGCCAGCGGAGCCAGAGATTCTCAATGACCCTAAGCATCTGCTCTGGGGTGACCGGCCTGAAGCCCA
 GCTGGAATAATCAGGCAGACATCAATCCATCAGAGCCCCTGCCAAACATAGCTGACCTCCCCAAAGAGAAC
 ATGCAGACTCAGGCTTTGAACACCACTGAA

ACGCGTACGCGGCCGCTCGAG - GFP Tag - GTTTAA

Protein Sequence: >MG201065 representing NM_026308
Red=Cloning site Green=Tags(s)

MAGPVKDREAFQRLSFLYQAAHCVLSQNPENQALARFYCHTEKTIKRLVLRQDPSVKRTLRCRSCSLLI
 PGLTCTQRQRRRKQQRWTVQTCLTCQRSQRFLNDPKHLLWGDRPEAQLENQADINPSEPLNIADLPKEN
 MQTQALNTSE

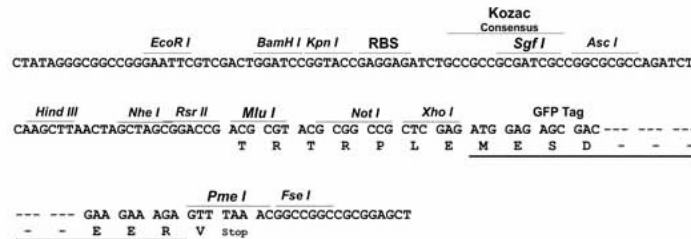
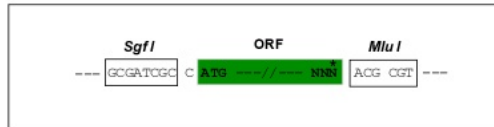
TRTRPLE - GFP Tag - V

Restriction Sites: SgfI-MluI


[View online »](#)

Cloning Scheme:

Cloning sites used for ORF Shuttling:



ACCN: NM_026308

ORF Size: 450 bp

OTI Disclaimer: The molecular sequence of this clone aligns with the gene accession number as a point of reference only. However, individual transcript sequences of the same gene can differ through naturally occurring variations (e.g. polymorphisms), each with its own valid existence. This clone is substantially in agreement with the reference, but a complete review of all prevailing variants is recommended prior to use. [More info](#)

OTI Annotation: This clone was engineered to express the complete ORF with an expression tag. Expression varies depending on the nature of the gene.

Components: The ORF clone is ion-exchange column purified and shipped in a 2D barcoded Matrix tube containing 10ug of transfection-ready, dried plasmid DNA (reconstitute with 100 ul of water).

Reconstitution Method: 1. Centrifuge at 5,000xg for 5min.
2. Carefully open the tube and add 100ul of sterile water to dissolve the DNA.
3. Close the tube and incubate for 10 minutes at room temperature.
4. Briefly vortex the tube and then do a quick spin (less than 5000xg) to concentrate the liquid at the bottom.
5. Store the suspended plasmid at -20°C. The DNA is stable for at least one year from date of shipping when stored at -20°C.

RefSeq: [NM_026308.1](#), [NP_080584.1](#)

RefSeq Size: 501 bp

RefSeq ORF: 453 bp

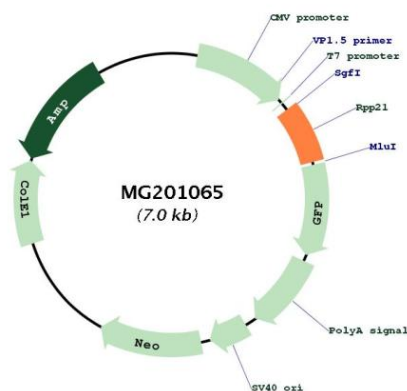
Locus ID: 67676

UniProt ID: [Q8R040](#)

Cytogenetics: 17 B1

Gene Summary: Component of ribonuclease P, a ribonucleoprotein complex that generates mature tRNA molecules by cleaving their 5'-ends.[UniProtKB/Swiss-Prot Function]

Product images:



Circular map for MG201065