

Product datasheet for **MG201058**

Pde6d (BC005636) Mouse Tagged ORF Clone

Product data:

Product Type: Expression Plasmids
Product Name: Pde6d (BC005636) Mouse Tagged ORF Clone
Tag: TurboGFP
Symbol: Pde6d
Synonyms: AI841218; PrBP/delta
Mammalian Cell Selection: Neomycin
Vector: pCMV6-AC-GFP (PS100010)
E. coli Selection: Ampicillin (100 ug/mL)
ORF Nucleotide Sequence: >MG201058 representing BC005636
 Red=Cloning site Blue=ORF Green=Tags(s)

TTTTGTAATACGACTCACTATAGGGCGGCCGGAATTCGTCGACTGGATCCGGTACCGAGGAGATCTGCC
 GCC**CGATCGCC**

ATGTCAGCCAAGGACGAGCGGGCCAGGGATATCCTGAGAGGCTTCAAACAAATTGGATGAACCTTCGGG
 ATGCCGAAACAGGGAAGATACTCTGGCAAGGAACAGAAGACCTGTCTGCCCTGGTGTGGAACATGAAGC
 CCGTGTGCCCAAGAAAATCCTCAAGTGAAGGCAGTGTCTCGAGAATTGAACTTTCTTCAGCAGAACAA
 ATGGAAAAATCCGCCTGGAACAAAAAGTTTACTTCAAAGGACAATGCCTAGAAGAGTGGTTCTTCGAGT
 TTGGCTTTGTGATCCCTAACTCCACAAACACCTGGCAGTCCTTGATAGAAGCAGCGCCTGAGTCCCAGAT
 GATGCCCGCCAGCGTCTAACGGCAATGTCATCATAGAGACAAAGTTCTTTGACGATGATCTTCTGTG
 AGCACATCCAAAGTGAGGCTTTTCTATGTT

ACGCGTACGCGGCCGCTCGAG - GFP Tag - GTTTAA

Protein Sequence: >MG201058 representing BC005636
 Red=Cloning site Green=Tags(s)

MSAKDERARDILRGFKLNWMLRDAETGKILWQGTEDLSVPGVEHEARVPPKILKCKAVSRELNFSAEQ
 MEKFRLEQKVYFKGQCLEEWFEEFGFVIPNSTNTWQSLIEAAPESQMMPASVLTGNVIEITKFFDDDLLV
 STSKVRLFYV

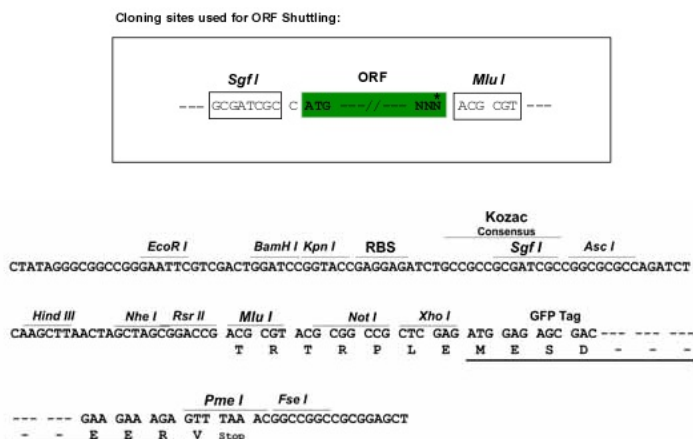
TRTRPLE - GFP Tag - V

Restriction Sites: SgfI-MluI

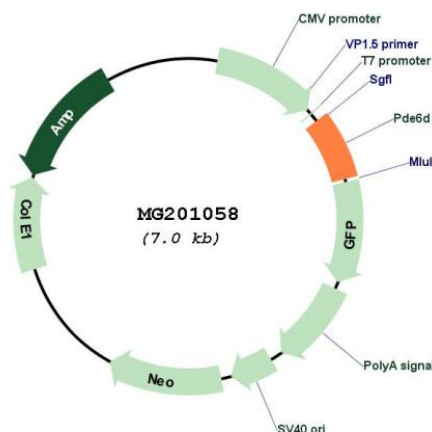


[View online »](#)

Cloning Scheme:



Plasmid Map:



ACCN: BC005636

ORF Size: 452 bp

OTI Disclaimer: The molecular sequence of this clone aligns with the gene accession number as a point of reference only. However, individual transcript sequences of the same gene can differ through naturally occurring variations (e.g. polymorphisms), each with its own valid existence. This clone is substantially in agreement with the reference, but a complete review of all prevailing variants is recommended prior to use. [More info](#)

OTI Annotation: This clone was engineered to express the complete ORF with an expression tag. Expression varies depending on the nature of the gene.

Components:	The ORF clone is ion-exchange column purified and shipped in a 2D barcoded Matrix tube containing 10ug of transfection-ready, dried plasmid DNA (reconstitute with 100 ul of water).
Reconstitution Method:	<ol style="list-style-type: none">1. Centrifuge at 5,000xg for 5min.2. Carefully open the tube and add 100ul of sterile water to dissolve the DNA.3. Close the tube and incubate for 10 minutes at room temperature.4. Briefly vortex the tube and then do a quick spin (less than 5000xg) to concentrate the liquid at the bottom.5. Store the suspended plasmid at -20°C. The DNA is stable for at least one year from date of shipping when stored at -20°C.
RefSeq:	<u>BC005636</u> , <u>AAH05636</u>
RefSeq Size:	1109 bp
RefSeq ORF:	452 bp
Locus ID:	18582
Cytogenetics:	1 C5
Gene Summary:	Promotes the release of prenylated target proteins from cellular membranes (PubMed:22179043). Modulates the activity of prenylated or palmitoylated Ras family members by regulating their subcellular location (PubMed:22179043). Required for normal ciliary targeting of farnesylated target proteins, such as INPP5E (By similarity). Modulates the subcellular location of target proteins by acting as a GTP specific dissociation inhibitor (GDI) (PubMed:22179043). Increases the affinity of ARL3 for GTP by several orders of magnitude. Stabilizes ARL3-GTP by decreasing the nucleotide dissociation rate.[UniProtKB/Swiss-Prot Function]