

## Product datasheet for **MG201011**

### Lyzl6 (NM\_027083) Mouse Tagged ORF Clone

#### Product data:

**Product Type:** Expression Plasmids  
**Product Name:** Lyzl6 (NM\_027083) Mouse Tagged ORF Clone  
**Tag:** TurboGFP  
**Symbol:** Lyzl6  
**Synonyms:** 1700023H08Rik; Lyc1; Lyzb  
**Mammalian Cell Selection:** Neomycin  
**Vector:** pCMV6-AC-GFP (PS100010)  
**E. coli Selection:** Ampicillin (100 ug/mL)  
**ORF Nucleotide Sequence:** >MG201011 representing NM\_027083  
 Red=Cloning site Blue=ORF Green=Tags(s)

TTTTGTAATACGACTCACTATAGGGCGGCCGGAATTCGTCGACTGGATCCGGTACCGAGGAGATCTGCC  
 GCCCGCATCGCC

ATGTTGAAGGCACTGTTTCATCTGTGTGGCAAGCTGCCTTCTGGTAGTGAATGATGGCAACATCATCCATC  
 GCTGTAGTTTGGCCAAGATTCTGTATGAAGAGGACTTGGATGGGTTTGAGGGCTACTCCCTGCCTGACTG  
 GCTGTGCTTGGCTTTTGTGAAAGCAACTTCAACATATCAAAGGTGAACGAGAACGTTGATGGTAGCTTC  
 GACTATGGCATCTCCAGATCAACAGTCGTTACTGGTGAACGACTACCAGAGTCATTCCGAGAACTTCT  
 GCCATGTCGACTGTCAAGAACTACTGAGTCCCAACCTCATTTCAACCATTCACTGTGCAAAAAAGATTGT  
 GTCTGGACCAGGAGGGATGAAGAACTGGGTAGAATGAAATTGCACTGTTTAGGACGACCACTCTCCTAC  
 TGGATGACGGGATGCCATCTGGGA

ACGCGTACGCGGCCGCTCGAG - GFP Tag - GTTTAA

**Protein Sequence:** >MG201011 representing NM\_027083  
 Red=Cloning site Green=Tags(s)

MLKALFICVASCLLVVNDGNIIHRCSLAKILYEEDLDGFEGYSLPDWLCLAFVESNFNISKVNENVDGSF  
 DYGIFQINSRYWCNDYQSHSENFCHVDCQELLSPLNLISTIHCAKKIVSGPGMKNNVWVWKLHCLGRPLSY  
 WMTGCHLG

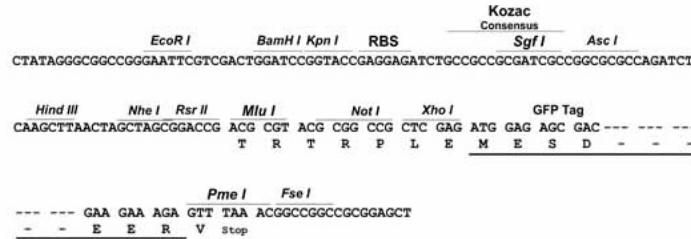
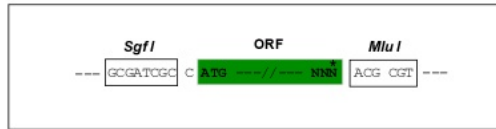
TRTRPLE - GFP Tag - V

**Restriction Sites:** SgfI-MluI

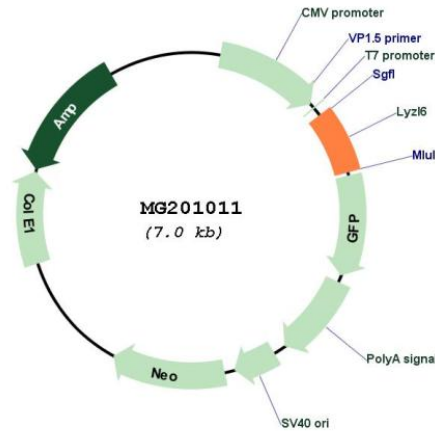


Cloning Scheme:

Cloning sites used for ORF Shutting:



Plasmid Map:



ACCN: NM\_027083

ORF Size: 444 bp

OTI Disclaimer: The molecular sequence of this clone aligns with the gene accession number as a point of reference only. However, individual transcript sequences of the same gene can differ through naturally occurring variations (e.g. polymorphisms), each with its own valid existence. This clone is substantially in agreement with the reference, but a complete review of all prevailing variants is recommended prior to use. [More info](#)

OTI Annotation: This clone was engineered to express the complete ORF with an expression tag. Expression varies depending on the nature of the gene.

<b>Components:</b>	The ORF clone is ion-exchange column purified and shipped in a 2D barcoded Matrix tube containing 10ug of transfection-ready, dried plasmid DNA (reconstitute with 100 ul of water).
<b>Reconstitution Method:</b>	<ol style="list-style-type: none"><li>1. Centrifuge at 5,000xg for 5min.</li><li>2. Carefully open the tube and add 100ul of sterile water to dissolve the DNA.</li><li>3. Close the tube and incubate for 10 minutes at room temperature.</li><li>4. Briefly vortex the tube and then do a quick spin (less than 5000xg) to concentrate the liquid at the bottom.</li><li>5. Store the suspended plasmid at -20°C. The DNA is stable for at least one year from date of shipping when stored at -20°C.</li></ol>
<b>RefSeq:</b>	<u><a href="#">NM_027083.3</a></u>
<b>RefSeq Size:</b>	914 bp
<b>RefSeq ORF:</b>	447 bp
<b>Locus ID:</b>	69444
<b>UniProt ID:</b>	<u><a href="#">Q9DA11</a></u>
<b>Cytogenetics:</b>	11 E1
<b>Gene Summary:</b>	May be involved sperm-egg plasma membrane adhesion and fusion during fertilization. Exhibits bacteriolytic activity in vitro against Micrococcus luteus and Staphylococcus aureus. Shows weak bacteriolytic activity against Gram-positive bacteria at physiological pH. Bacteriolytic activity is pH-dependent, with a maximum at around pH 5.6 (By similarity). [UniProtKB/Swiss-Prot Function]