

Product datasheet for **MG200945**

Ang4 (NM_177544) Mouse Tagged ORF Clone

Product data:

Product Type: Expression Plasmids
Product Name: Ang4 (NM_177544) Mouse Tagged ORF Clone
Tag: TurboGFP
Symbol: Ang4
Synonyms: Raa4; Rnase5d
Mammalian Cell Selection: Neomycin
Vector: pCMV6-AC-GFP (PS100010)
E. coli Selection: Ampicillin (100 ug/mL)
ORF Nucleotide Sequence: >MG200945 representing NM_177544
Red=Cloning site Blue=ORF Green=Tags(s)

TTTTGTAATACGACTCACTATAGGGCGCCGGGAATTCGTCGACTGGATCCGGTACCGAGGAGATCTGCC
GCC**CGATCGCC**

ATGACAATGAGCCCATGTCCTTTGTTGTTGGTCTTCGTGCTGGTCTGGTTGTGATTCTCCAACCTCTGG
CTCAGAATGAAAGGTACGAAAAATTCCTACGTACGACTATGATGCCAAGCCAAATGGCCGGGACGACAG
ATACTGTGAAAGTATGATGAAGGAAAGAAAGCTAACCTCGCCTTGCAAAGATGTCAACACCTTTATCCAT
GGCACCAAGAAAAACATCAGGGCCATCTGTGAAAGAAAGGAAGCCCTTATGGAGAAAACCTCAGAATAA
GCAATTCTCCCTCCAGATCACCACTTGTACGCACTCAGGAGCGTCTCCAGGCCTCCATGCGGGTACCG
AGCCTTTAAAGATTTAGATATATTGTTATTGCCTGTGAAGATGGCTGGCCTGTCCACTTCGATGAGTCT
TTATCAGTCCG

ACGCGTACGCGGCCGCTCGAG - GFP Tag - GTTTAA

Protein Sequence: >MG200945 representing NM_177544
Red=Cloning site Green=Tags(s)

MTMSPCLLLVFLGLVVIPPTLAQNERYEKFLRQHYDAKPNGRDDRYCESMMKERKLTSPCKDVNTFIH
GTKKNIRAICGKKGSPIYGENFRISNSPFQITTCCTHSGASPRPPCYRAFKDFRYIIVIACEDGWPVHFDES
FISP

TRTRPLE - GFP Tag - V

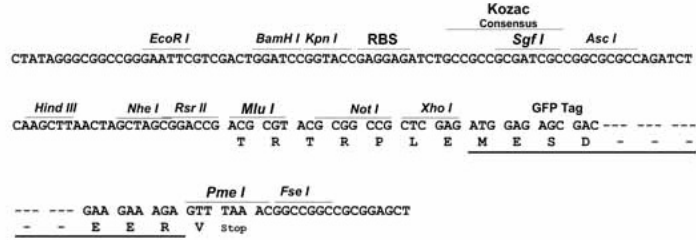
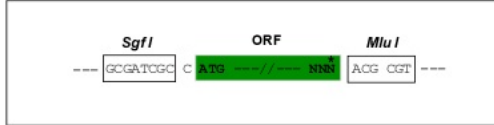
Restriction Sites: Sgfl-MluI



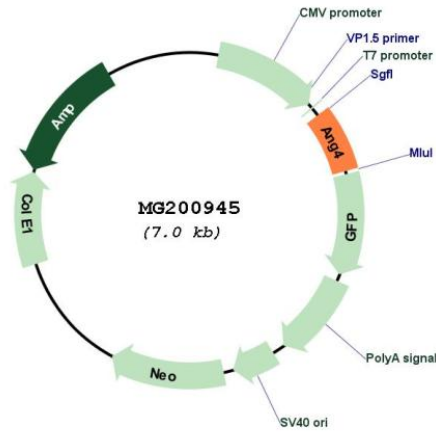
[View online »](#)

Cloning Scheme:

Cloning sites used for ORF Shutting:



Plasmid Map:



ACCN: NM_177544
 ORF Size: 432 bp

OTI Disclaimer: Due to the inherent nature of this plasmid, standard methods to replicate additional amounts of DNA in E. coli are highly likely to result in mutations and/or rearrangements. Therefore, OriGene does not guarantee the capability to replicate this plasmid DNA. Additional amounts of DNA can be purchased from OriGene with batch-specific, full-sequence verification at a reduced cost. Please contact our customer care team at custsupport@origene.com or by calling 301.340.3188 option 3 for pricing and delivery.

The molecular sequence of this clone aligns with the gene accession number as a point of reference only. However, individual transcript sequences of the same gene can differ through naturally occurring variations (e.g. polymorphisms), each with its own valid existence. This clone is substantially in agreement with the reference, but a complete review of all prevailing variants is recommended prior to use. [More info](#)

OTI Annotation: This clone was engineered to express the complete ORF with an expression tag. Expression varies depending on the nature of the gene.

Components: The ORF clone is ion-exchange column purified and shipped in a 2D barcoded Matrix tube containing 10ug of transfection-ready, dried plasmid DNA (reconstitute with 100 ul of water).

Reconstitution Method:

1. Centrifuge at 5,000xg for 5min.
2. Carefully open the tube and add 100ul of sterile water to dissolve the DNA.
3. Close the tube and incubate for 10 minutes at room temperature.
4. Briefly vortex the tube and then do a quick spin (less than 5000xg) to concentrate the liquid at the bottom.
5. Store the suspended plasmid at -20°C. The DNA is stable for at least one year from date of shipping when stored at -20°C.

RefSeq: [NM_177544.4, NP_808212.2](#)

RefSeq Size: 695 bp

RefSeq ORF: 435 bp

Locus ID: 219033

UniProt ID: [Q3TMQ6](#)

Cytogenetics: 14 C1

Gene Summary: Has bactericidal activity against E.faecalis and L.monocytogenes, but not against L.innocua and E.coli. Promotes angiogenesis (in vitro). Has low ribonuclease activity (in vitro). Promotes proliferation of melanoma cells, but not of endothelial cells or fibroblasts (in vitro). [UniProtKB/Swiss-Prot Function]