

## Product datasheet for **MG200944**

### **Cnih1 (NM\_009919) Mouse Tagged ORF Clone**

#### Product data:

**Product Type:** Expression Plasmids  
**Tag:** TurboGFP  
**Symbol:** Cnih1  
**Synonyms:** 0610007J15; Cnih; CNIH-1  
**Mammalian Cell Selection:** Neomycin  
**Vector:** pCMV6-AC-GFP (PS100010)  
**E. coli Selection:** Ampicillin (100 ug/mL)

**ORF Nucleotide Sequence:** >MG200944 representing NM\_009919  
Red=Cloning site Blue=ORF Green=Tags(s)

TTTTGTAATACGACTACTATAGGGCGCCGGGAATTCGTCGACTGGATCCGGTACCGAGGAGATCTGCC  
GCCGCGATCGCC

ATGGCGTTCACTTTGCGCGCCTTCTGCTATATGCTGGCGCTGCTGCTCACCGCCGCGCTCATCTTCTTCG  
CCATCTGGCACATCATAGCATTGATGAGCTGAAGACCGACTACAAGAACCCTATAGACCAGTGCAATAC  
CCTGAACCCCTTTGTCTTCCAGAGTACCTCATCCACGCGTTCTTCTGTGTCATGTTTCTCTGTGCGGCA  
GAGTGGCTGACCCCTGGGCCTCAATATGCCCTTTTGGCATAACCATATTTGGAGGTATATGAGTAGACCAG  
TGATGAGCGGCCCTGGCCTCTATGCCCGACGACCATCATGAATGCAGACATTCTAGCCTACTGTACAGAA  
GGAAGGATGGTGCAAACCTCGCTTTTACCTTCTAGCGTTTTTACTACCTATACGGCATGATCTATGTT  
CTGGTGAGCTCT

AGCGGACCGACGCGTACGCGCGCTCGAG - GFP Tag - GTTTAA

**Protein Sequence:** >MG200944 representing NM\_009919  
Red=Cloning site Green=Tags(s)

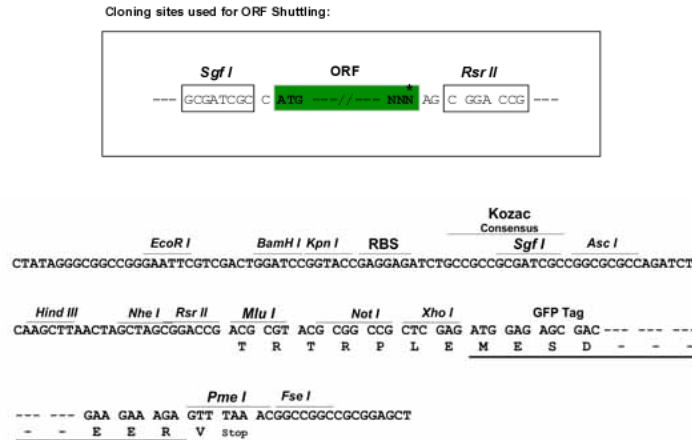
MAFTFAAFCYMLALLLTAALIFFAIWHIIAFDELKTDYKNPIDQCNTLNPLVLPEYLIHAFFCVMFLLCAA  
EWLTLGLNMPLLAYHIWRYMSRPVMSGPLYDPTTIMNADILAYCQKEGWCKLAFYLLAFFYYLYGMIYV  
LVSS

SGPTRRRLE - GFP Tag - V

**Restriction Sites:** SgfI-RsrII



**Cloning Scheme:**



**ACCN:** NM\_009919

**ORF Size:** 432 bp

**OTI Disclaimer:** The molecular sequence of this clone aligns with the gene accession number as a point of reference only. However, individual transcript sequences of the same gene can differ through naturally occurring variations (e.g. polymorphisms), each with its own valid existence. This clone is substantially in agreement with the reference, but a complete review of all prevailing variants is recommended prior to use. [More info](#)

**OTI Annotation:** This clone was engineered to express the complete ORF with an expression tag. Expression varies depending on the nature of the gene.

**Components:** The ORF clone is ion-exchange column purified and shipped in a 2D barcoded Matrix tube containing 10ug of transfection-ready, dried plasmid DNA (reconstitute with 100 ul of water).

- Reconstitution Method:**
1. Centrifuge at 5,000xg for 5min.
  2. Carefully open the tube and add 100ul of sterile water to dissolve the DNA.
  3. Close the tube and incubate for 10 minutes at room temperature.
  4. Briefly vortex the tube and then do a quick spin (less than 5000xg) to concentrate the liquid at the bottom.
  5. Store the suspended plasmid at -20°C. The DNA is stable for at least one year from date of shipping when stored at -20°C.

**Note:** Plasmids are not sterile. For experiments where strict sterility is required, filtration with 0.22um filter is required.

**RefSeq:** [NM\\_009919.2](#)

RefSeq Size: 1388 bp

RefSeq ORF: 435 bp

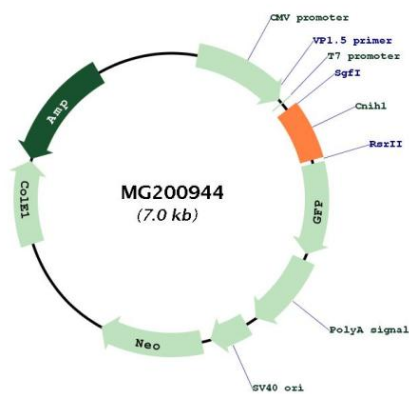
Locus ID: 12793

UniProt ID: [O35372](#)

Cytogenetics: 14 C1

Gene Summary: Involved in the selective transport and maturation of TGF-alpha family proteins.  
[UniProtKB/Swiss-Prot Function]

### Product images:



Circular map for MG200944