

Product datasheet for **MG200904**

Lypd1 (BC058599) Mouse Tagged ORF Clone

Product data:

Product Type: Expression Plasmids
Product Name: Lypd1 (BC058599) Mouse Tagged ORF Clone
Tag: TurboGFP
Symbol: Lypd1
Synonyms: Lypdc1, Lynx2
Mammalian Cell Selection: Neomycin
Vector: pCMV6-AC-GFP (PS100010)
E. coli Selection: Ampicillin (100 ug/mL)
ORF Nucleotide Sequence: >MG200904 representing BC058599
 Red=Cloning site Blue=ORF Green=Tags(s)

TTTTGTAAACGACTCACTATAGGGCGGCCGGAATTCGTCGACTGGATCCGGTACCGAGGAGATCTGCC
 GCC**CGATCGCC**

ATGTGGGTTCTCGGCATCGCAGCAACTTTTTCGGATTGTTCTGGCTTCCAGGGCTGGCGCTGCAAATTC
 AGTGCTACCAAGTGAAGAATTCAGCTGAACAACGATTGCTCATCCCCTGAGTTCATCGTAAATTGCAC
 CGTGAACGTTCAAGACATGTGTGAGAAAGATGATGGAGCAAAGTCTGGGATCATGTACCGGAAGTCG
 TGTGCATCGTCAGCAGCCTGTCTATTGCTTCAGCTGGGTACCACTCCTTCTGTTCCCCTGGAACTGA
 ACTCCGTGTGCATCAGCTGCTGCAACACCCCTCTTTGCAATGGGCCGAGGCCCAAGAAGAGAGGCAGCTC
 TGCCTCGGCCATCAGGCCAGGGCTTCTACCACTCTCCTGTTCTTCCACTTAGCCCTCTGCTTGGCACAC
 TGC

ACGCGTACGCGGCCGCTCGAG - GFP Tag - GTTTAA

Protein Sequence: >MG200904 representing BC058599
 Red=Cloning site Green=Tags(s)

MWVLGIAATFCGLFWLPGLALQIQCYQCEEFQLNNDSSPEFIVNCTVNVQDMCQKEVMEQSAGIMYRKS
 CASSAACLIASAGYQSFCSPGKLNVCISCCNTPLCNGPRPKRGSSASAIRPGLLTLLFFHLALCLAH
 C

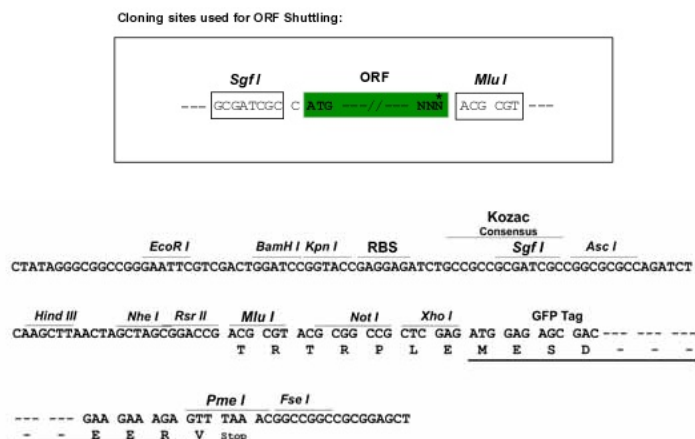
TRTRPLE - GFP Tag - V

Restriction Sites: SgfI-MluI

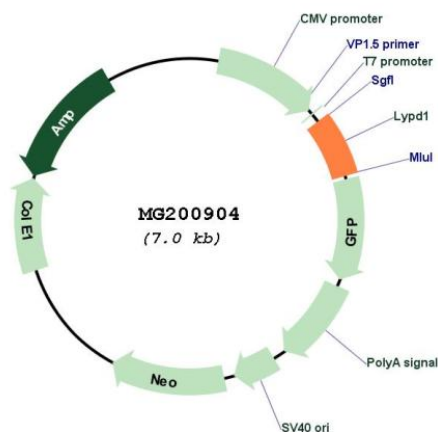


View online »

Cloning Scheme:



Plasmid Map:



ACCN: BC058599

ORF Size: 425 bp

OTI Disclaimer: The molecular sequence of this clone aligns with the gene accession number as a point of reference only. However, individual transcript sequences of the same gene can differ through naturally occurring variations (e.g. polymorphisms), each with its own valid existence. This clone is substantially in agreement with the reference, but a complete review of all prevailing variants is recommended prior to use. [More info](#)

OTI Annotation: This clone was engineered to express the complete ORF with an expression tag. Expression varies depending on the nature of the gene.

Components:	The ORF clone is ion-exchange column purified and shipped in a 2D barcoded Matrix tube containing 10ug of transfection-ready, dried plasmid DNA (reconstitute with 100 ul of water).
Reconstitution Method:	<ol style="list-style-type: none"> 1. Centrifuge at 5,000xg for 5min. 2. Carefully open the tube and add 100ul of sterile water to dissolve the DNA. 3. Close the tube and incubate for 10 minutes at room temperature. 4. Briefly vortex the tube and then do a quick spin (less than 5000xg) to concentrate the liquid at the bottom. 5. Store the suspended plasmid at -20°C. The DNA is stable for at least one year from date of shipping when stored at -20°C.
RefSeq:	<u>BC058599, AAH58599</u>
RefSeq Size:	1800 bp
RefSeq ORF:	425 bp
Locus ID:	72585
Cytogenetics:	1 E3
Gene Summary:	Believed to act as a modulator of nicotinic acetylcholine receptors (nAChRs) activity. In vitro increases receptor desensitization and decreases affinity for ACh of alpha-4:beta-2-containing nAChRs (PubMed:19246390). May play a role in the intracellular trafficking of alpha-4:beta-2 and alpha-7-containing nAChRs and may inhibit their expression at the cell surface (PubMed:26276394, PubMed:25716842). May be involved in the control of anxiety (PubMed:19246390).[UniProtKB/Swiss-Prot Function]