

Product datasheet for **MG200871**

Cnih4 (NM_030131) Mouse Tagged ORF Clone

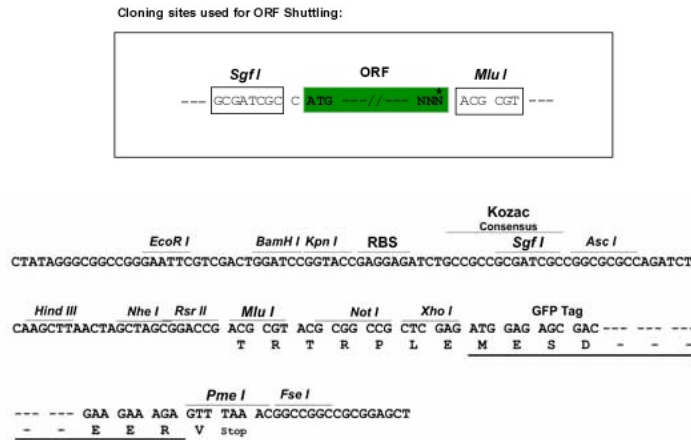
Product data:

Product Type:	Expression Plasmids
Product Name:	Cnih4 (NM_030131) Mouse Tagged ORF Clone
Tag:	TurboGFP
Symbol:	Cnih4
Synonyms:	AI647760; AW050376; CNIH-4; D530030D03Rik; E430023H19Rik; HSPC163
Mammalian Cell Selection:	Neomycin
Vector:	pCMV6-AC-GFP (PS100010)
E. coli Selection:	Ampicillin (100 ug/mL)
ORF Nucleotide Sequence:	>MG200871 representing NM_030131 Red=Cloning site Blue=ORF Green=Tags(s) TTTTGTAATACGACTCACTATAGGGCGGCCGGAATTCGTCGACTGGATCCGGTACCGAGGAGATCTGCC GCC CGATCGCC ATGGAGGCGGTGGTGTTCCTCTTCTCGCTCCTCGACTGTTGCGCGCTCATCTTCTCCTCCGCTACTTCA TCATTACATTGTCTGATTTAGAATGTGATTACATTAACGCCAGATCATGTTGCTCAAAATTAACAAGTG GGTGATCCCGAGTTGGTCGGCCACACCATTGTCCTGTGCTGATGCTTGTCTCCCTGCTGGTTCATC TTCCTTCTCAACTACCTGTGCCACGTGGAATATATATAGGTTTCATTATGGTGCCAAGTGCAACATGG GAGTATTTGATCCAACAGAAATACACAACCGGGACAGTTAAAGTCACACATGAAAGAAGCCATGATCAA GCTTGGTTTCTACCTGCTCTGTTTCTTTCATGTATCTCTATAGTATGATTCTAGCTTTGATAAATGAC AC CGT ACGCGGCCGCTCGAG - GFP Tag - GTTAA >MG200871 representing NM_030131 Red=Cloning site Green=Tags(s) MEAVVFLFSLLDCCALIFLSVYFIITLSDLCDYINARSCSKLNKWWIPELVGHTIVTVLMLVSLHWFI FLLNLPVATWNIYRFIMVPSGNMGVDFDPTIEIHNRGQLKSHMKEAMIKLGFYLLCFFMYLSMILALIND TRTRPLE - GFP Tag - V
Restriction Sites:	Sgfl-MluI

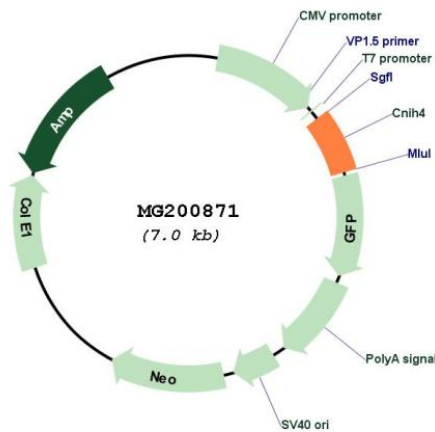


[View online »](#)

Cloning Scheme:



Plasmid Map:



ACCN:

NM_030131

ORF Size:

417 bp

OTI Disclaimer:

The molecular sequence of this clone aligns with the gene accession number as a point of reference only. However, individual transcript sequences of the same gene can differ through naturally occurring variations (e.g. polymorphisms), each with its own valid existence. This clone is substantially in agreement with the reference, but a complete review of all prevailing variants is recommended prior to use. [More info](#)

OTI Annotation:	This clone was engineered to express the complete ORF with an expression tag. Expression varies depending on the nature of the gene.
Components:	The ORF clone is ion-exchange column purified and shipped in a 2D barcoded Matrix tube containing 10ug of transfection-ready, dried plasmid DNA (reconstitute with 100 ul of water).
Reconstitution Method:	<ol style="list-style-type: none">1. Centrifuge at 5,000xg for 5min.2. Carefully open the tube and add 100ul of sterile water to dissolve the DNA.3. Close the tube and incubate for 10 minutes at room temperature.4. Briefly vortex the tube and then do a quick spin (less than 5000xg) to concentrate the liquid at the bottom.5. Store the suspended plasmid at -20°C. The DNA is stable for at least one year from date of shipping when stored at -20°C.
RefSeq:	NM_030131.3
RefSeq Size:	671 bp
RefSeq ORF:	420 bp
Locus ID:	98417
UniProt ID:	Q9CX13
Cytogenetics:	1 H4
Gene Summary:	Involved in G protein-coupled receptors (GPCRs) trafficking from the endoplasmic reticulum to the cell surface; it promotes the exit of GPCRs from the early secretory pathway, likely through interaction with the COPII machinery.[UniProtKB/Swiss-Prot Function]