

## Product datasheet for **MG200860**

### **Dhh (BC062810) Mouse Tagged ORF Clone**

#### Product data:

**Product Type:** Expression Plasmids  
**Product Name:** Dhh (BC062810) Mouse Tagged ORF Clone  
**Tag:** TurboGFP  
**Symbol:** Dhh  
**Synonyms:** C78960  
**Mammalian Cell Selection:** Neomycin  
**Vector:** pCMV6-AC-GFP (PS100010)  
**E. coli Selection:** Ampicillin (100 ug/mL)  
**ORF Nucleotide Sequence:** >MG200860 representing BC062810  
**Red**=Cloning site **Blue**=ORF **Green**=Tags(s)

TTTGTAAATACGACTCACTATAGGGCGGCCGGAATTCGTCGACTGGATCCGGTACCGAGGAGATCTGCC  
GCC**CGATCGCC**

ATGGCTCTGCCGGCCAGTCTGTTGCCCTGTGCTGCTTGGCACTCTTGGCACTATCTGCCAGAGCTGCG  
GGCCGGGCGGAGGACCGTTGGCCGGCGCGTTATGTGCGCAAGCAACTTGTGCTCTGCTATACAAGCA  
GTTTGTGCCAGTATGCCGAGCGGACCCTGGCGCGAGTGGCCAGCGAGGGGAGGTAACAAGGGG  
TCGGAGCGCTCCGGGACCTCGTACCAACTACAACCCCGACATAATCTTCAAGGATGAGGAGAACAGCG  
GCGCAGACCGCTGATGACAGAGGTAAGGAGAGTTTCTCCACCTGCTCTACCACACCAGCTCCTC  
AATTTCTCTACAACAACCTGGAGGATGAAGTGTCTTCATCCCGAGAGACCCTAACTAAAA

**ACGCGT**ACGCGGCCGCTCGAG - GFP Tag - GTTTAA

**Protein Sequence:** >MG200860 representing BC062810  
**Red**=Cloning site **Green**=Tags(s)

MALPASLLPLCCLALLALSAQSCGPGRGPVRRRYVRKQLVPLLYKQFVPSMPERTLGASGPAEGRVTRG  
SERFRDLVPNYPDIIFKDEENSGADRLMTEVRRVSPHLLYHTTSSSIFLQPPWRMNCSEIPRDPKLLK

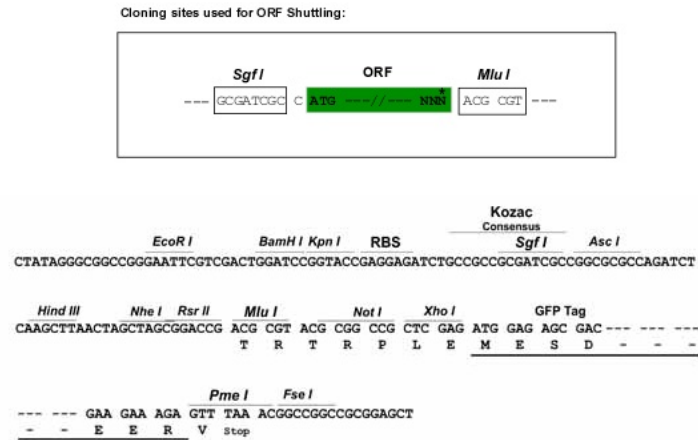
**TRTRPLE** - GFP Tag - V

**Restriction Sites:** SgfI-MluI

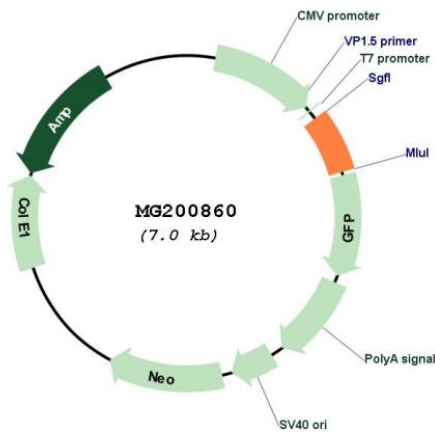


[View online »](#)

## Cloning Scheme:



## Plasmid Map:



ACCN: BC062810

ORF Size: 416 bp

OTI Disclaimer: The molecular sequence of this clone aligns with the gene accession number as a point of reference only. However, individual transcript sequences of the same gene can differ through naturally occurring variations (e.g. polymorphisms), each with its own valid existence. This clone is substantially in agreement with the reference, but a complete review of all prevailing variants is recommended prior to use. [More info](#)

OTI Annotation:	This clone was engineered to express the complete ORF with an expression tag. Expression varies depending on the nature of the gene.
Components:	The ORF clone is ion-exchange column purified and shipped in a 2D barcoded Matrix tube containing 10ug of transfection-ready, dried plasmid DNA (reconstitute with 100 ul of water).
Reconstitution Method:	<ol style="list-style-type: none"><li>1. Centrifuge at 5,000xg for 5min.</li><li>2. Carefully open the tube and add 100ul of sterile water to dissolve the DNA.</li><li>3. Close the tube and incubate for 10 minutes at room temperature.</li><li>4. Briefly vortex the tube and then do a quick spin (less than 5000xg) to concentrate the liquid at the bottom.</li><li>5. Store the suspended plasmid at -20°C. The DNA is stable for at least one year from date of shipping when stored at -20°C.</li></ol>
RefSeq:	<a href="#">BC062810</a>
RefSeq Size:	717 bp
RefSeq ORF:	416 bp
Locus ID:	13363
Cytogenetics:	15 55.05 cM
Gene Summary:	Intercellular signal essential for a variety of patterning events during development. May function as a spermatocyte survival factor in the testes. Essential for testes development. [UniProtKB/Swiss-Prot Function]