

Product datasheet for **MG200848**

Pfn3 (NM_029303) Mouse Tagged ORF Clone

Product data:

Product Type: Expression Plasmids
Product Name: Pfn3 (NM_029303) Mouse Tagged ORF Clone
Tag: TurboGFP
Symbol: Pfn3
Synonyms: 1700012P12Rik
Mammalian Cell Selection: Neomycin
Vector: pCMV6-AC-GFP (PS100010)
E. coli Selection: Ampicillin (100 ug/mL)
ORF Nucleotide Sequence: >MG200848 representing NM_029303
 Red=Cloning site Blue=ORF Green=Tags(s)

TTTTGTAATACGACTCACTATAGGGCGGCCGGAATTCGTCGACTGGATCCGGTACCGAGGAGATCTGCC
 GCC**CGATCGCC**

ATGAGTGACTGGAAGGGCTACATCAGTGCAGTGCCTGCGGGATCAGCGGATCGATGACGTGGCTATCGTGG
 GCCACTCGGACAATCGCTGTGTGTGGGCATCACGGCCTGGGGTCTGCTGGCTGCCATCTCCCCGAGGA
 GGTGGGTGTGCTACCGGGCCAGACCGGCACACCTTTCTGCAGACGGGTCTGAGCGTGGCAGGCCCGCC
 TGCTGCGTTATCCGTGACTACCTGCTGGCCGAGGGTGACGGCGTACTGGATGCGCGCACCAAGGGGCTAG
 ACGGGCGTGCAATCTGTGTGGCCACACGCCACGGCGCTCCTGGTGCTCATGGCAGACGAGGCGTGCA
 TGGAGGCATCCTCAATAAGACAGTGCACGATCTGATTGGTGGGCTGCGTGAGCAGTGCTCT

ACGCGTACGCGGCCGCTCGAG - GFP Tag - GTTTAA

Protein Sequence: >MG200848 representing NM_029303
 Red=Cloning site Green=Tags(s)

MSDWKGYISAVLRDQRIDDVAIVGHSDNRCVWASRPGLLAAISPQEVGVLTPDRHTFLQTGLSVAGRR
 CCVIRDYLLAEGDGVLDARTKGLDGRAICVGHTRPRALLVLMGRRGVHGGILNKTVHDLIGGLREQCS

TRTRPLE - GFP Tag - V

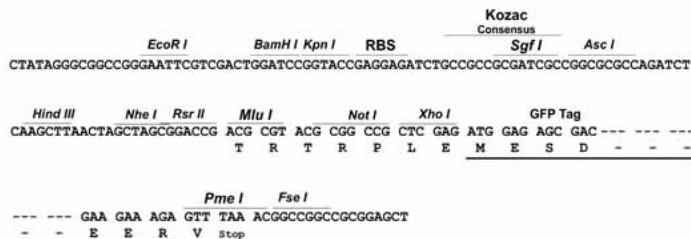
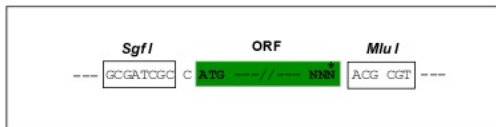
Restriction Sites: Sgfl-MluI



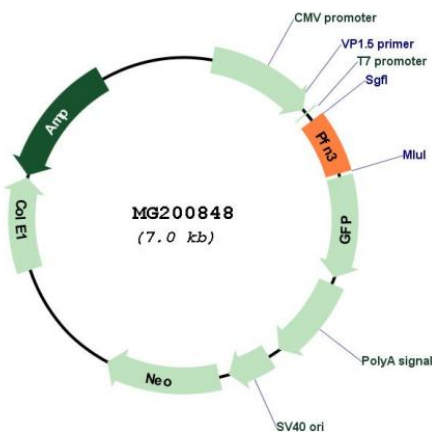
[View online »](#)

Cloning Scheme:

Cloning sites used for ORF Shutting:



Plasmid Map:



ACCN: NM_029303

ORF Size: 411 bp

OTI Disclaimer: The molecular sequence of this clone aligns with the gene accession number as a point of reference only. However, individual transcript sequences of the same gene can differ through naturally occurring variations (e.g. polymorphisms), each with its own valid existence. This clone is substantially in agreement with the reference, but a complete review of all prevailing variants is recommended prior to use. [More info](#)

OTI Annotation:	This clone was engineered to express the complete ORF with an expression tag. Expression varies depending on the nature of the gene.
Components:	The ORF clone is ion-exchange column purified and shipped in a 2D barcoded Matrix tube containing 10ug of transfection-ready, dried plasmid DNA (reconstitute with 100 ul of water).
Reconstitution Method:	<ol style="list-style-type: none">1. Centrifuge at 5,000xg for 5min.2. Carefully open the tube and add 100ul of sterile water to dissolve the DNA.3. Close the tube and incubate for 10 minutes at room temperature.4. Briefly vortex the tube and then do a quick spin (less than 5000xg) to concentrate the liquid at the bottom.5. Store the suspended plasmid at -20°C. The DNA is stable for at least one year from date of shipping when stored at -20°C.
RefSeq:	<u>NM_029303.2</u> , <u>NP_083579.1</u>
RefSeq Size:	574 bp
RefSeq ORF:	414 bp
Locus ID:	75477
UniProt ID:	<u>Q9DAD6</u>
Cytogenetics:	13 30.06 cM
Gene Summary:	Binds to actin and affects the structure of the cytoskeleton. Binds to poly-L-proline, phosphatidylinositol 3-phosphate (PtdIns(3)P), phosphatidylinositol 4,5-bisphosphate (PtdIns(4,5)P2) and phosphatidylinositol 4-phosphate (PtdIns(4)P). Slightly reduces actin polymerization. May be involved in spermatogenesis.[UniProtKB/Swiss-Prot Function]