

Product datasheet for **MG200808**

LOC665622 (BC011440) Mouse Tagged ORF Clone

Product data:

Product Type: Expression Plasmids
Product Name: LOC665622 (BC011440) Mouse Tagged ORF Clone
Tag: TurboGFP
Symbol: LOC665622
Synonyms: Gm11277; OTTMUSG00000000449
Mammalian Cell Selection: Neomycin
Vector: pCMV6-AC-GFP (PS100010)
E. coli Selection: Ampicillin (100 ug/mL)
ORF Nucleotide Sequence: >MG200808 representing BC011440
Red=Cloning site Blue=ORF Green=Tags(s)

TTTTGTAATACGACTCACTATAGGGCGCCGGGAATTCGTCGACTGGATCCGGTACCGAGGAGATCTGCC
GCC**CGATCGCC**

ATGCTGAGCCTGCGAAGTCCGCTCCCGCCCGAAGAAGGGCTCCAAGAAGGCCGTCACCAAGGCCCAGA
AGAAGGACGGCAAGAAGCGCAAGCGCAGCCGCAAGGAGAGCTACTCGGTGTACGTGTACAAGGTGCTGAA
GCAAGTGCACCCGACACCGGCATCTCTCCAAGGCCATGGGCATCATGAACTCGTTCGTGAACGACATC
TTCGAGCGCATCGCGAGCGAGGGCTCCCGCCTGGCGCATTACAACAAGCGCTCGACCATCACGTCCCGGG
AGATCCAGACTGCCGTGCGCCTGCTGCTGCCCGGGGAGCTGGCCAAGCACGCGGTGTCGGAGGGCACCAA
GGCTGTCACCAAGTACACCAGCTCCAACATAGTTTGTGATTCAAAGACCAGAAG

ACGCGTACGCGGCCGCTCGAG - GFP Tag - GTTTAA

Protein Sequence: >MG200808 representing BC011440
Red=Cloning site Green=Tags(s)
MPEPAKSAPPKKGSKKA VTKA QKKGKRRKRSR KESYSVYVYKVLKQVHPDTGISSKAMGMNSFVNDI
FERIASEASRLAHYNKRSTITSREIQTAVRLLLPGLAKHAVSEGTKAVTKYTSSNIVCDSKDQK

TRTRPLE - GFP Tag - V

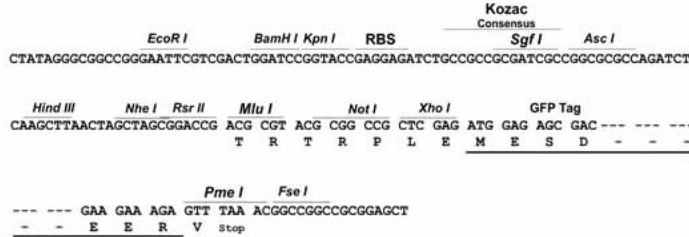
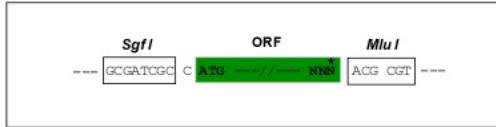
Restriction Sites: Sgfl-MluI



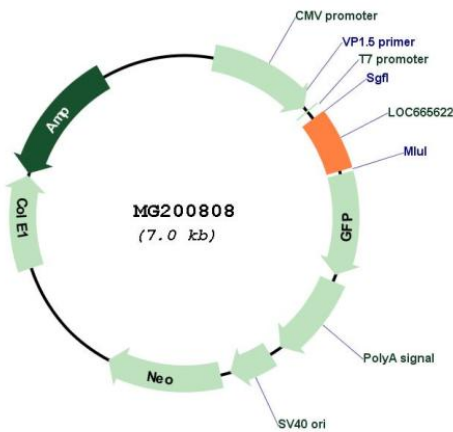
[View online »](#)

Cloning Scheme:

Cloning sites used for ORF Shutting:



Plasmid Map:



ACCN: BC011440

ORF Size: 407 bp

OTI Disclaimer: The molecular sequence of this clone aligns with the gene accession number as a point of reference only. However, individual transcript sequences of the same gene can differ through naturally occurring variations (e.g. polymorphisms), each with its own valid existence. This clone is substantially in agreement with the reference, but a complete review of all prevailing variants is recommended prior to use. [More info](#)

OTI Annotation:	This clone was engineered to express the complete ORF with an expression tag. Expression varies depending on the nature of the gene.
Components:	The ORF clone is ion-exchange column purified and shipped in a 2D barcoded Matrix tube containing 10ug of transfection-ready, dried plasmid DNA (reconstitute with 100 ul of water).
Reconstitution Method:	<ol style="list-style-type: none">1. Centrifuge at 5,000xg for 5min.2. Carefully open the tube and add 100ul of sterile water to dissolve the DNA.3. Close the tube and incubate for 10 minutes at room temperature.4. Briefly vortex the tube and then do a quick spin (less than 5000xg) to concentrate the liquid at the bottom.5. Store the suspended plasmid at -20°C. The DNA is stable for at least one year from date of shipping when stored at -20°C.
RefSeq:	<u>BC011440</u> , <u>AAH11440</u>
RefSeq Size:	2236 bp
RefSeq ORF:	407 bp
Locus ID:	665622
Cytogenetics:	13 A3.1
Gene Summary:	Histones are basic nuclear proteins that are responsible for the nucleosome structure of the chromosomal fiber in eukaryotes. This structure consists of approximately 146 bp of DNA wrapped around a nucleosome, an octamer composed of pairs of each of the four core histones (H2A, H2B, H3, and H4). The chromatin fiber is further compacted through the interaction of a linker histone, H1, with the DNA between the nucleosomes to form higher order chromatin structures. This gene encodes a replication-dependent histone that is a member of the histone H2B family and generates two transcripts through the use of the conserved stem-loop termination motif, and the polyA addition motif. [provided by RefSeq, Sep 2015]