

Product datasheet for **MG200805**

Tafa2 (NM_182807) Mouse Tagged ORF Clone

Product data:

Product Type:	Expression Plasmids
Tag:	TurboGFP
Symbol:	Tafa2
Synonyms:	6330575M02; Fam19; Fam19a2; FAM19A2 Tafa-2; Sa; Sam2; Taf; Tafa; Tafa-2
Mammalian Cell Selection:	Neomycin
Vector:	pCMV6-AC-GFP (PS100010)
E. coli Selection:	Ampicillin (100 ug/mL)

ORF Nucleotide Sequence: >MG200805 representing NM_182807
Red=Cloning site Blue=ORF Green=Tags(s)

TTTTGTAATACGACTCACTATAGGGCGCCGGGAATTCGTCGACTGGATCCGGTACCGAGGAGATCTGCC
GCCGCGATCGCC

ATGATCACCAAGATGAATAAGAGATACTTGCAGAAAGCAACACAAGGAAAGCTTCTGATAATTATTTT
TAGTGACCTTGTGGGGAAAGCCGTTTCCAGCGCCAACCATCACAAGCTCACCATGTTAGAACTGGGAC
TTGCGAGGTTGTGGCGCTGCACAGATGCTGTAATAAGAACAAGATAGAAGAACGGTCCCAAACGGTCAAG
TGCTCCTGCTCCCTGGCAGGTGGCAGGCACTACCCGAGCTGCTCCGTCTTGTGTGGATGCATCCATAG
TGGAACAAAAGTGGTGGTGCATATGCAGCCATGCCTGGAGGGAGAGGAATGTAAGTCCCTCCAGATCG
CAAAGGATGGAGCTGTTCTCTGAAAACAAGTAAAAACAAGTAAAGGTAACCCAT

ACGCGTACGCGGCCGCTCGAG - GFP Tag - GTTTAA

Protein Sequence: >MG200805 representing NM_182807
Red=Cloning site Green=Tags(s)

MITKMNKRYLQKATQGKLLIIIFIVTLWGKAVSSANHHKAAHVRTGTCEVVALHRCCNKNKIEERSQTVK
CSCFPQVAGTTRAAPSCVDASIVEQKWWCHMQPCLEGECKVLPDRKGWSSGNKVKTTRVTH

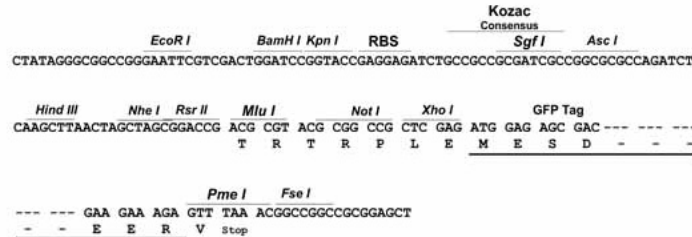
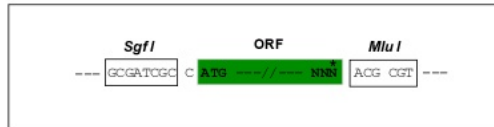
TRTRPLE - GFP Tag - V

Restriction Sites: SgfI-MluI



Cloning Scheme:

Cloning sites used for ORF Shutting:


ACCN: NM_182807

ORF Size: 405 bp

OTI Disclaimer: The molecular sequence of this clone aligns with the gene accession number as a point of reference only. However, individual transcript sequences of the same gene can differ through naturally occurring variations (e.g. polymorphisms), each with its own valid existence. This clone is substantially in agreement with the reference, but a complete review of all prevailing variants is recommended prior to use. [More info](#)
OTI Annotation: This clone was engineered to express the complete ORF with an expression tag. Expression varies depending on the nature of the gene.

Components: The ORF clone is ion-exchange column purified and shipped in a 2D barcoded Matrix tube containing 10ug of transfection-ready, dried plasmid DNA (reconstitute with 100 ul of water).

- Reconstitution Method:**
1. Centrifuge at 5,000xg for 5min.
 2. Carefully open the tube and add 100ul of sterile water to dissolve the DNA.
 3. Close the tube and incubate for 10 minutes at room temperature.
 4. Briefly vortex the tube and then do a quick spin (less than 5000xg) to concentrate the liquid at the bottom.
 5. Store the suspended plasmid at -20°C. The DNA is stable for at least one year from date of shipping when stored at -20°C.

Note: Plasmids are not sterile. For experiments where strict sterility is required, filtration with 0.22um filter is required.

RefSeq:	NM_182807.3 , NP_877959.2
RefSeq Size:	4153 bp
RefSeq ORF:	408 bp
Locus ID:	268354
UniProt ID:	Q7TPG7

Cytogenetics: 10 D2

Gene Summary: This gene is a member of the Tafa family which is composed of five highly homologous genes that encode small secreted proteins. These proteins contain conserved cysteine residues at fixed positions, and are distantly related to MIP-1alpha, a member of the CC-chemokine family. The Tafa proteins are predominantly expressed in specific regions of the brain, and are postulated to function as brain-specific chemokines or neurokinins that act as regulators of immune and nervous cells. [provided by RefSeq, Jul 2008]

Product images:



Circular map for MG200805