

Product datasheet for **MG200788**

Syncn (NM_026716) Mouse Tagged ORF Clone

Product data:

Product Type: Expression Plasmids
Product Name: Syncn (NM_026716) Mouse Tagged ORF Clone
Tag: TurboGFP
Symbol: Syncn
Synonyms: 0910001K16Rik; 1810038B08Rik; SYL
Mammalian Cell Selection: Neomycin
Vector: pCMV6-AC-GFP (PS100010)
E. coli Selection: Ampicillin (100 ug/mL)
ORF Nucleotide Sequence: >MG200788 representing NM_026716
Red=Cloning site Blue=ORF Green=Tags(s)

TTTTGTAATACGACTCACTATAGGGCGCCGGGAATTCGTCGACTGGATCCGGTACCGAGGAGATCTGCC
GCC**CGATCGCC**

ATGTCCCTGCTGTGCCACTGCTGCTGGCTTTAGCCCTGGTGGCTGTCCCTGGTGCCCATGGCAATTGCC
CGGTGCCCGCAGACCTGAAGAAGTCAGATGGGACGCGTACGTGCCAGACTCTATGAGAAGAGTGATCC
ATACTATGACAACTGCTGCCAGGGGCCGTGTTGTCTGTGGAGCCAGGTACTGACCTGCCATCTGCCC
TCGGGCTGGTCTAACTGCATCGTCTCTGGTAGTGGCCAGCGCTGTGAGATCACTGTGTGGTCTCTCC
CCGTAAGCATGGCAAGACCCGAAGTTCACCGGGTACTTACCCTCGCCTGGAAGAGTACCGCAAAGG
CATCTTTGGAGACTGGTCCGACTCCATCTCTGCCCTCTACTGCAAGTGCTAT

AG**CGGACCG**ACGCGTACGCGCCGCTCGAG - GFP Tag - GTTTAA

Protein Sequence: >MG200788 representing NM_026716
Red=Cloning site Green=Tags(s)

MSLLCPLLLALALVAVPGAHGNCPVPADLKKSDGTRTRCARLYEKSDPYDNCQGPVLSVEPGTDLPLYLP
SGWSNTASSLVGQRCEITVWSLPGKHGKTRKFTAGTYPRLEEYRKGIFGDWSDSISALYCKCY

SGPTRRRLE - GFP Tag - V

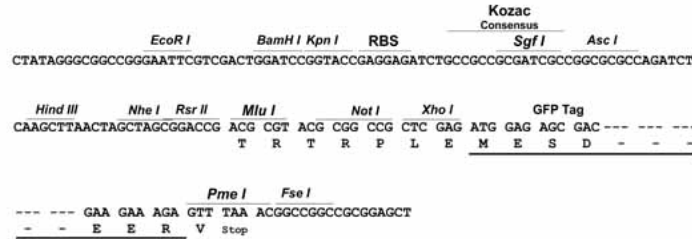
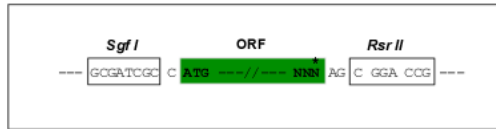
Restriction Sites: Sgfl-RsrII



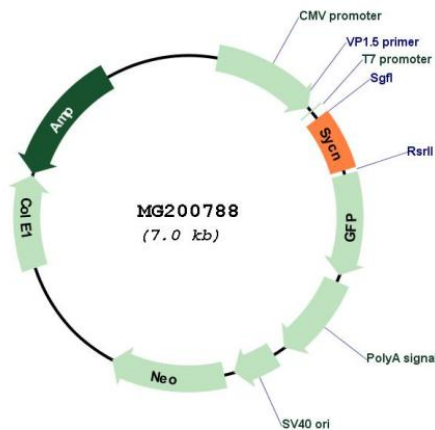
[View online »](#)

Cloning Scheme:

Cloning sites used for ORF Shuttling:



Plasmid Map:



ACCN: NM_026716

ORF Size: 402 bp

OTI Disclaimer: The molecular sequence of this clone aligns with the gene accession number as a point of reference only. However, individual transcript sequences of the same gene can differ through naturally occurring variations (e.g. polymorphisms), each with its own valid existence. This clone is substantially in agreement with the reference, but a complete review of all prevailing variants is recommended prior to use. [More info](#)

OTI Annotation:	This clone was engineered to express the complete ORF with an expression tag. Expression varies depending on the nature of the gene.
Components:	The ORF clone is ion-exchange column purified and shipped in a 2D barcoded Matrix tube containing 10ug of transfection-ready, dried plasmid DNA (reconstitute with 100 ul of water).
Reconstitution Method:	<ol style="list-style-type: none">1. Centrifuge at 5,000xg for 5min.2. Carefully open the tube and add 100ul of sterile water to dissolve the DNA.3. Close the tube and incubate for 10 minutes at room temperature.4. Briefly vortex the tube and then do a quick spin (less than 5000xg) to concentrate the liquid at the bottom.5. Store the suspended plasmid at -20°C. The DNA is stable for at least one year from date of shipping when stored at -20°C.
RefSeq:	NM_026716.2 , NP_080992.2
RefSeq Size:	589 bp
RefSeq ORF:	405 bp
Locus ID:	68416
UniProt ID:	Q8VCK7
Cytogenetics:	7 B1
Gene Summary:	Functions in exocytosis in pancreatic acinar cells regulating the fusion of zymogen granules with each other. May have a pore-forming activity on membranes and regulate exocytosis in other exocrine tissues.[UniProtKB/Swiss-Prot Function]