

Product datasheet for **MG200777**

Pdrg1 (NM_178939) Mouse Tagged ORF Clone

Product data:

Product Type: Expression Plasmids
Product Name: Pdrg1 (NM_178939) Mouse Tagged ORF Clone
Tag: TurboGFP
Symbol: Pdrg1
Synonyms: 1110004D19Rik; AU020945; AV006589; Pdrg
Mammalian Cell Selection: Neomycin
Vector: pCMV6-AC-GFP (PS100010)
E. coli Selection: Ampicillin (100 ug/mL)
ORF Nucleotide Sequence: >MG200777 representing NM_178939
 Red=Cloning site Blue=ORF Green=Tags(s)

TTTTGTAATACGACTCACTATAGGGCGGCCGGAATTCGTCGACTGGATCCGGTACCGAGGAGATCTGCC
 GCC**CGATCGCC**

ATGCTGTCCCGAGGCGGAGCGGGTGTGCGGTACCTGGTCAAGTAGAGGAGTTGGCCGAGGCCGTGC
 TGTCGGACAAGCGGCAGATTGTAGACCTGGACCAAGAGGAATCAGAACCAGAGGGCCTGAGGGCCCT
 ACAGAAGGACCTGAGTGTCTCTGAAGATGTGATGGTTTGGTGGGAACATGTTTCATCAAATGCCTCAC
 CCTAAGACGAAGGAAATGATCCAGAAAGATCAAGAGCACCTGGATAAAGAAATAGAAAGGCTGCGGAGTC
 AACTTAAAGTAAAGTTAACCGCTCTTGAAGCCCAAGGAAAACCGGAGCTGAAAGGTTTAACTGAA
 TCCCTCAGCCCGATGAGGTTAAAGCCCTCAAGTTCATCTTAAAGGA

ACGCGTACGCGGCCGCTCGAG - GFP Tag - GTTTAA

Protein Sequence: >MG200777 representing NM_178939
 Red=Cloning site Green=Tags(s)

MLSPEAERVLRYLVEVEELAEAVLSDKRQIVDLDTKRNQREGLRALQKDLVSSEDVMVCFGNMFIKMPH
 PKTKEMIQKDQEHLDKEIERLRSQKVKVNRLFQAQKPELKGFNLNPLSPDEVKALKVILKG

TRTRPLE - GFP Tag - V

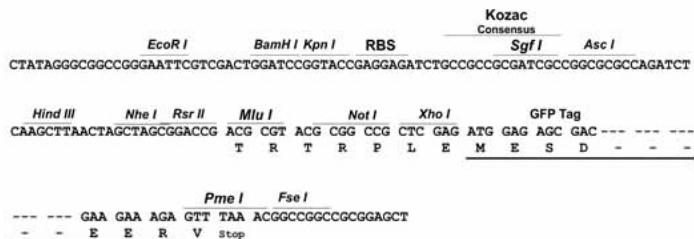
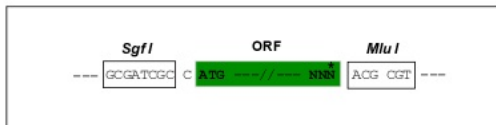
Restriction Sites: Sgfl-MluI



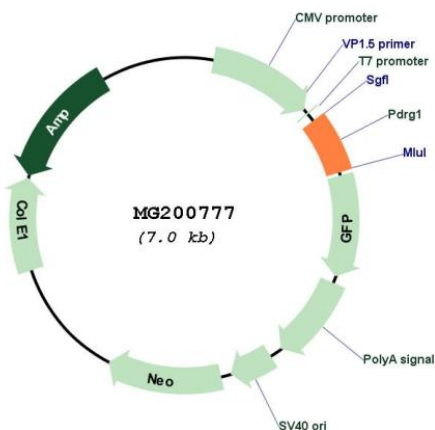
[View online »](#)

Cloning Scheme:

Cloning sites used for ORF Shutting:



Plasmid Map:



ACCN: NM_178939

ORF Size: 399 bp

OTI Disclaimer: The molecular sequence of this clone aligns with the gene accession number as a point of reference only. However, individual transcript sequences of the same gene can differ through naturally occurring variations (e.g. polymorphisms), each with its own valid existence. This clone is substantially in agreement with the reference, but a complete review of all prevailing variants is recommended prior to use. [More info](#)

OTI Annotation:	This clone was engineered to express the complete ORF with an expression tag. Expression varies depending on the nature of the gene.
Components:	The ORF clone is ion-exchange column purified and shipped in a 2D barcoded Matrix tube containing 10ug of transfection-ready, dried plasmid DNA (reconstitute with 100 ul of water).
Reconstitution Method:	<ol style="list-style-type: none">1. Centrifuge at 5,000xg for 5min.2. Carefully open the tube and add 100ul of sterile water to dissolve the DNA.3. Close the tube and incubate for 10 minutes at room temperature.4. Briefly vortex the tube and then do a quick spin (less than 5000xg) to concentrate the liquid at the bottom.5. Store the suspended plasmid at -20°C. The DNA is stable for at least one year from date of shipping when stored at -20°C.
RefSeq:	NM_178939.2 , NP_849270.1
RefSeq Size:	1229 bp
RefSeq ORF:	402 bp
Locus ID:	68559
UniProt ID:	P59048
Cytogenetics:	2 H1
Gene Summary:	May play a role in chaperone-mediated protein folding.[UniProtKB/Swiss-Prot Function]